

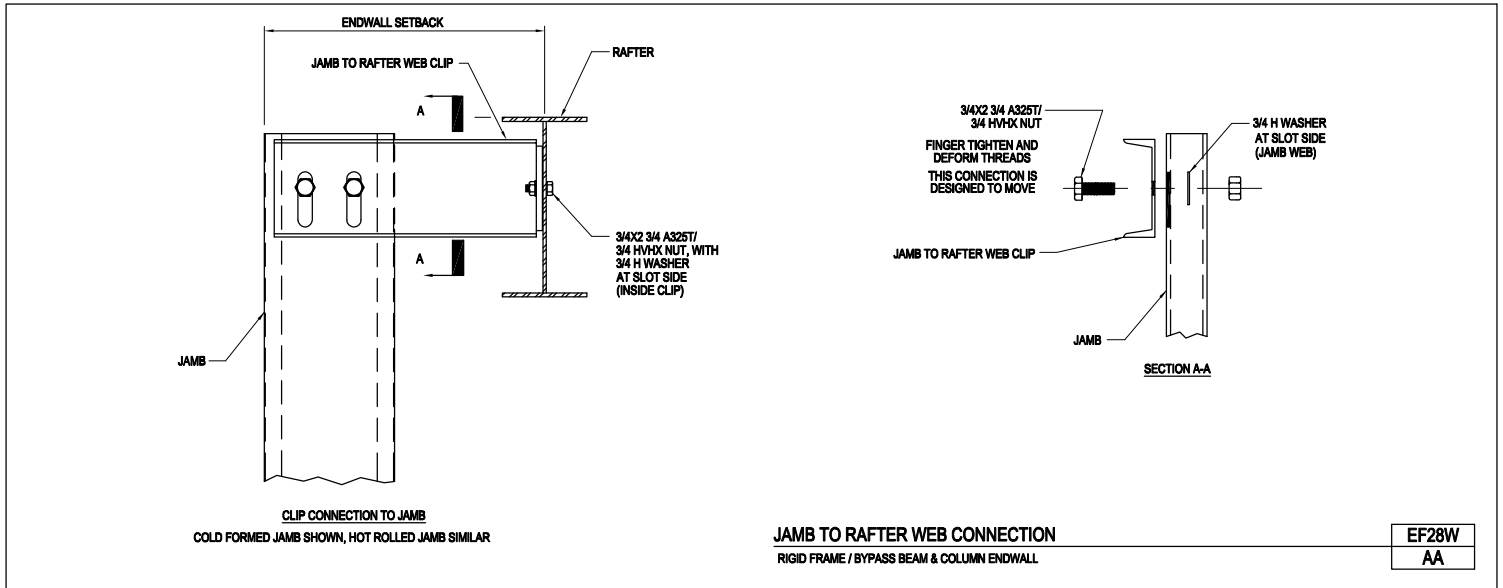
Index

EF28W/AA, Jamb to Rafter Web Connection, Rigid Frame/Bypass Beam & Column Endwall  
EF28Y/AA, Jamb to Rafter Bottom Flange of Rafter, Inset/Flush Beam & Column Endwall  
OF01/AA, Jamb to Girt Connection  
OF01B/AA, Jamb Base Attachment  
OF06/AA, Jamb to Eave Strut Connection  
OF06A/AA, Jamb to Eave Strut Connection w/ Reinforcing Girt  
OF07/AA, 8" Jamb Extension Cee, Girt to Girt Connection  
OF08/AA, 8" Jamb Extension Cee to Eave Strut Connection, 8" Wall Girts  
OF08A/AA, 8" Jamb Extension to Connection to Eave Strut Reinforcing Girt, 8" Girt Depth  
OF08B/AA, 8" Jamb Extension Cee to Eave Strut w/ Reinforcing Girt, 9 1/2" or 12" Girts  
OF09/AA, EW View at 80C16- Jamb Extension Cee to Bottom of Purlin, RF EW (Inset/Flush/Bypass) Beam & Column EW (Bypass)  
OF09A/AA, 8" Jamb Extension Cee to Bottom Flange of Rafter, 8" Inset/Flush EW Girts at Beam & Column EW  
OF09B/AA, 8" Jamb Extension Cee to Bottom Flange of Rafter, 9 1/2" Inset/Flush EW Girts at Beam & Column EW  
OF09BA/AA, 8" Jamb Extension Cee to Bottom Flange of Rafter, 12" Inset/Flush EW Girts at Beam & Column EW  
OF09W/AA, 80C16- Jamb Extension Cee to Bottom of Purlin, Bypass Girts at Rigid Frame EW  
OF11/AA, Jamb Base Connection  
OF16/AA, Girt to Jamb Connection  
OF16A/AA, Girt to Jamb Connection  
OF16B/AA, Connection at Girt (Above/Below Opening) to Jamb, Girt to Jamb Connection  
OF16W/AA, Girt to Structural Jamb Connection  
OF16WB/AA, Connection at Girt (Above/Below Opening) to Structural Jamb, Girt to Structural Jamb Connection  
OF21/AA, Header to Jamb Connection, Similar at Sill  
OF41/AA, Header to Jamb Connection, 8", 9 1/2" and 12" Girts  
OF42/AA, Wrap Sill to Jamb Connection, 8", 9 1/2" and 12" Girts  
OF51/AA, Special 6" Spacing for Header to Jamb Connection  
OF52/AA, Special 6" Spacing for Sill to Jamb Connection  
OF53/AA, Special 7" Spacing for Header to Jamb Connection, Header Shown, Similar at Sill  
OF54/AA, Special 8" Spacing for Header to Jamb Connection, Header Shown, Similar at Sill  
OF61/AA, Framed Opening Anchor Rod Detail  
OF91/AA, Field and Shop Located Framed Opening Notes  
OF95/AA, Typical Header and Jamb Connections, Structural Framed Openings  
OF95A/AA, Structural Header and Jamb Connections, Structural Framed Openings  
OF96/AA, Jamb to Eave Strut Connection w/ Reinforcing Girts, Structural Framed Opening  
OF96A/AA, Structural Jamb to Eave Strut Connection, Structural Framed Opening  
OFOA/AA, Framed Opening Key, Jamb to Girt Condition  
OFOAA/AA, Framed Opening Key w/ Wrap Header, Jamb to Girt Condition

Index

OFOAA/AA, Framed Opening Key w/ Wrap Header, Jamb to Girt Condition  
OFOAB/AA, Framed Opening Key w/ Wrap Header & Sill, Jamb to Girt Condition  
OF0B/AA, Framed Opening Key, Jamb to Eave Strut  
OT01/AA, Section at Header and Jamb Trim, Architectural III, Architectural "V" Rib and Long Span III Walls  
OT21/AB, Section at Header and Cover Flashing  
OT22/AB, Section at Sill and Cover Flashing  
OT23A/AD, Detail at Head for Field Located Framed Opening, Shadow Panel Walls w/ Alternate Fab-Lok Fastener  
OT23/AD, Detail at Head for Field Located Framed Opening, Shadow Panel Walls  
OT26/AB, Section at Framed Opening Jamb, Long Span III Walls  
OT26/AC, Section at Framed Opening Jamb, Architectural III Walls  
OT26/AV, Section at Framed Opening Jamb, Architectural "V" Rib Walls  
OT29/AD, Jamb Detail for Field Located Framed Opening, Shadow Panel Walls  
OT30/AD, Jamb Detail for Field Located Framed Opening, Shadow Panel Walls  
OT32/AD, Jamb Detail for Field Located Framed Opening, Shadow Panel Walls  
OT36A/AD, Detail at Sill for Field Located Framed Opening, Shadow Panel Walls w/ Alternate Fab-Lok Fastener  
OT36/AD, Detail at Sill for Field Located Framed Opening, Shadow Panel Walls  
OT38/AD, Sub-Flashing Assembly, Shadow Panel Walls  
OT39/AD, Notching Detail at Field Located Framed Opening, Shadow Panel Walls  
OT41/AD, Caulking Detail at Framed Opening, Shadow Panel Walls  
OTOA/AB, Sheeting and Flashing Elevation, Architectural III, Architectural "V" Rib, Long Span III and Multi-Rib Panel Walls

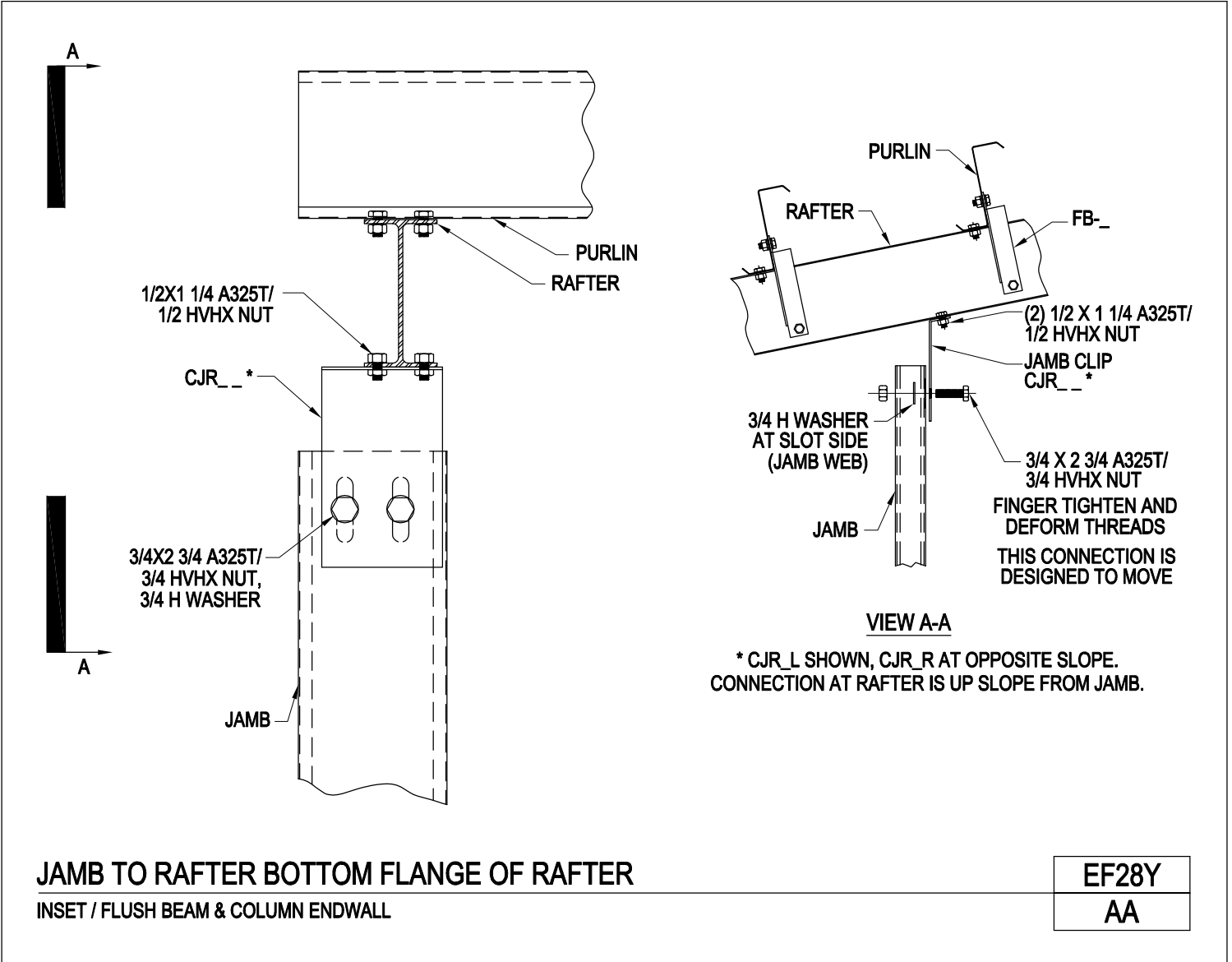
Jamb to Rafter Web Connection  
Rigid Frame/Bypass Beam & Column Endwall  
EF28W/AA



[Download the DWG file by clicking here.](#)

[To Section Index](#)

Jamb to Rafter Bottom Flange of Rafter  
Inset/Flush Beam & Column Endwall  
EF28Y/AA



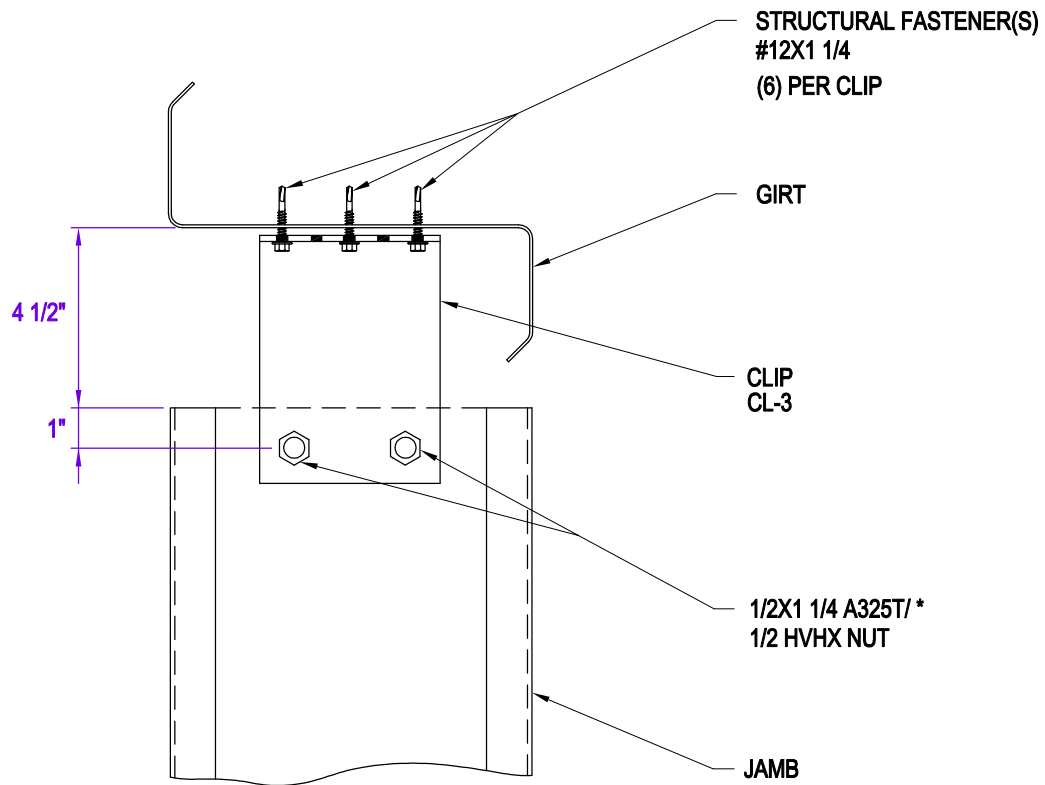
[Download the DWG file by clicking here.](#)

[To Section Index](#)



Jamb to Girt Connection

OF01/AA



\* BUTTON HEAD BOLTS REQUIRED  
AT STRIP WINDOW

**JAMB TO GIRT CONNECTION**

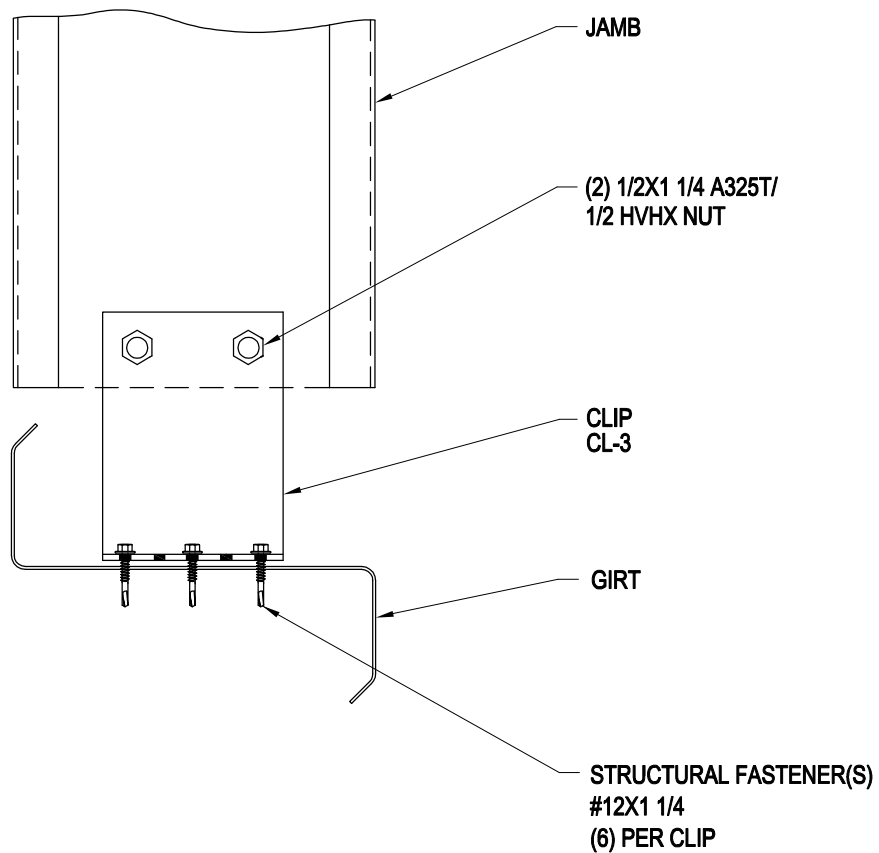
|      |
|------|
| OF01 |
| AA   |

[Download the DWG file by clicking here.](#)

[To Section Index](#)

## Jamb Base Attachment to Girt

OF01B/AA



**JAMB BASE ATTACHMENT TO GIRT**

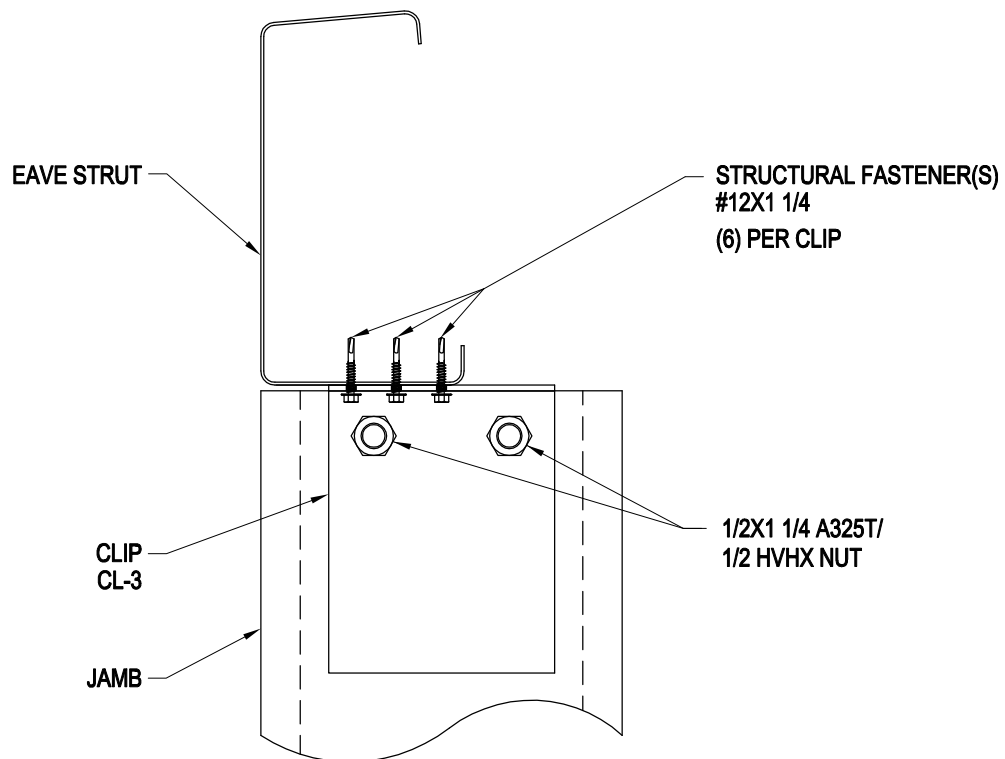
|              |
|--------------|
| <b>OF01B</b> |
| <b>AA</b>    |

[Download the DWG file by clicking here.](#)

[To Section Index](#)

## Jamb to Eave Strut Connection

OF06/AA



**NOTE:**  
FOR USE WITH JAMBS, JAMB EXTENSIONS AND  
WINDOW JAMBS ONLY, UNLESS OTHERWISE SPECIFIED  
BY DESIGN. SEE OF06/AA FOR FULL DOOR JAMBS.

### JAMB TO EAVE STRUT CONNECTION

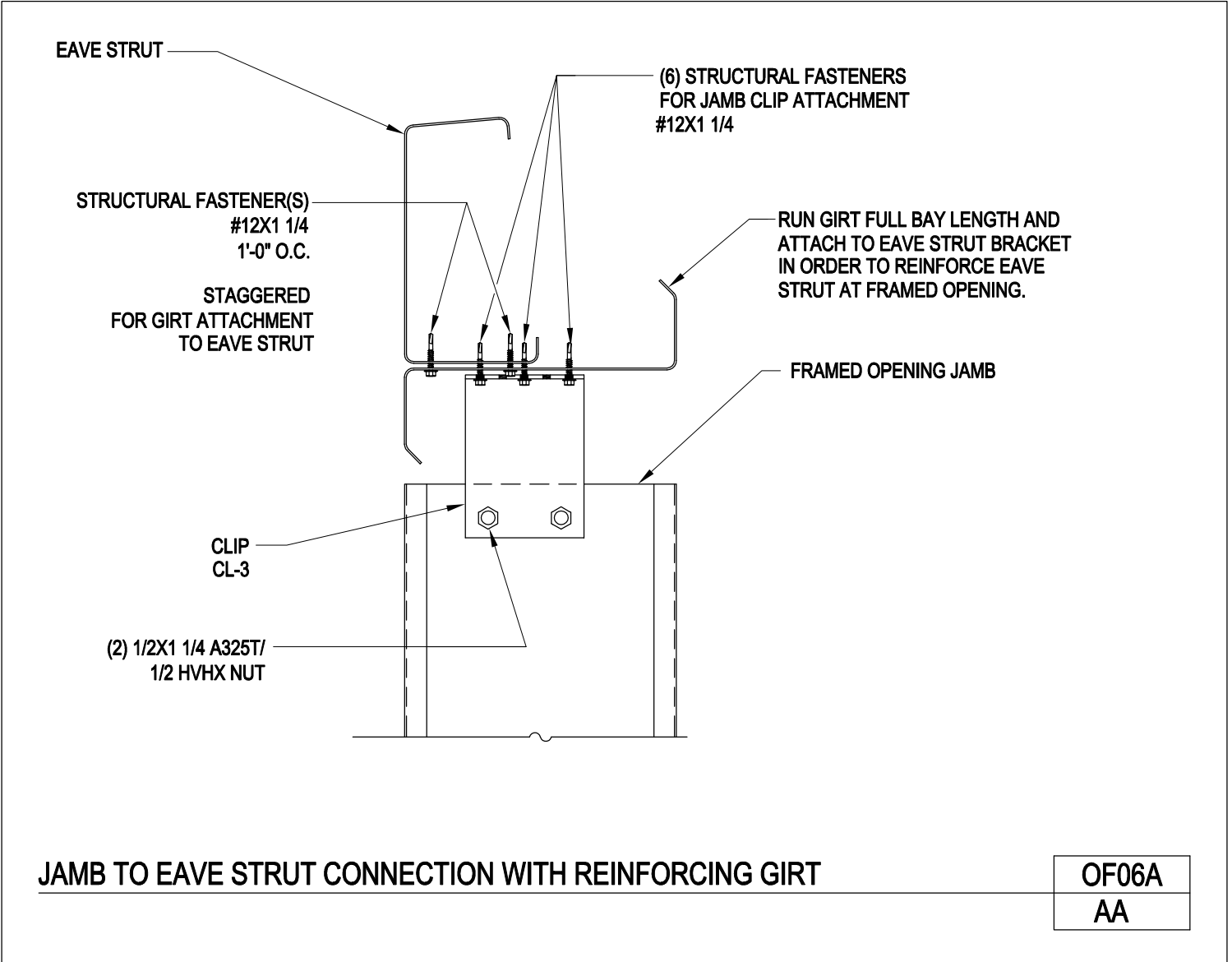
|      |
|------|
| OF06 |
| AA   |

[Download the DWG file by clicking here.](#)

[To Section Index](#)

Jamb to Eave Strut Connection With Reinforcing Girt

OF06A/AA

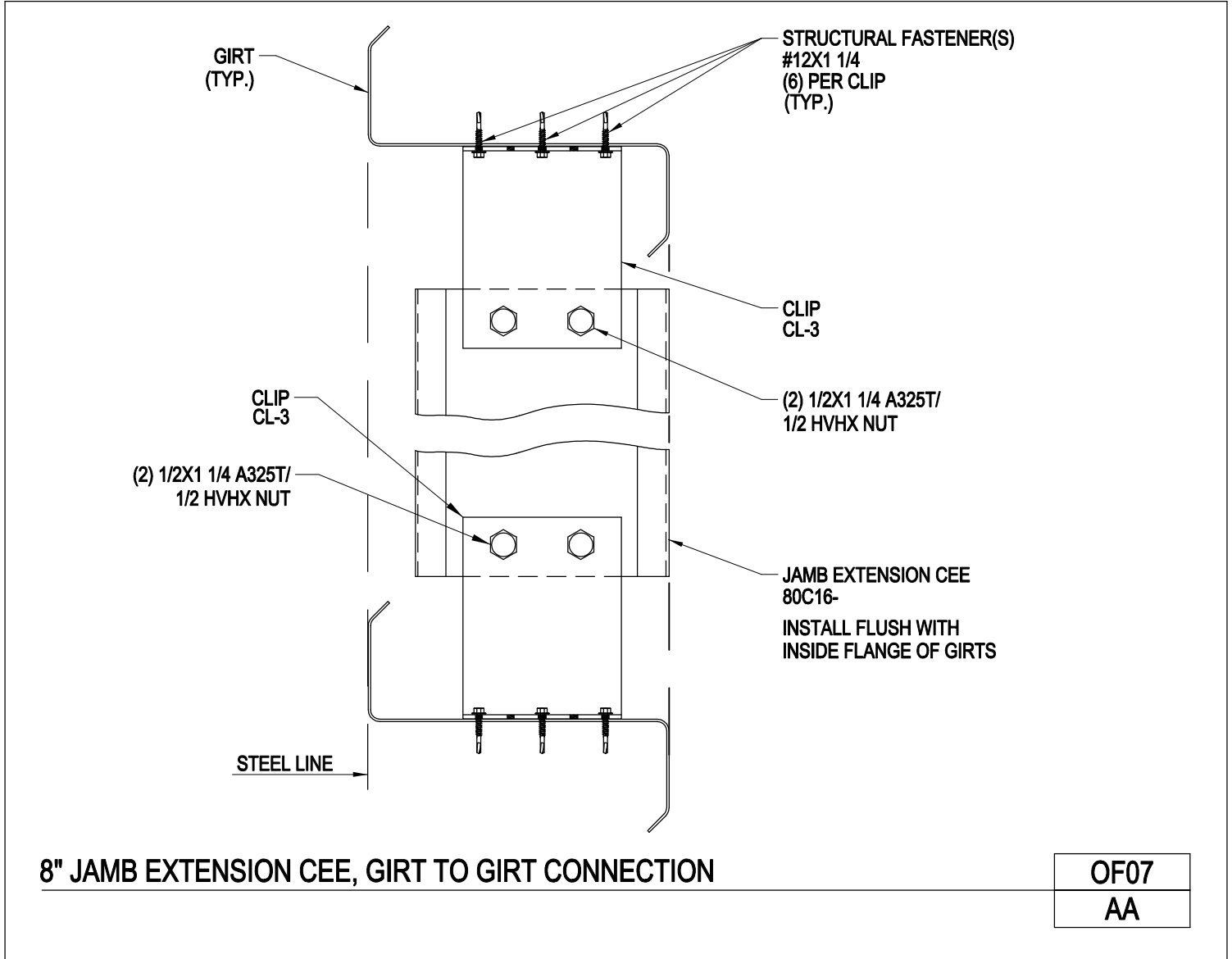


[Download the DWG file by clicking here.](#)

[To Section Index](#)

8" Jamb Extension Cee, Girt to Girt Connection

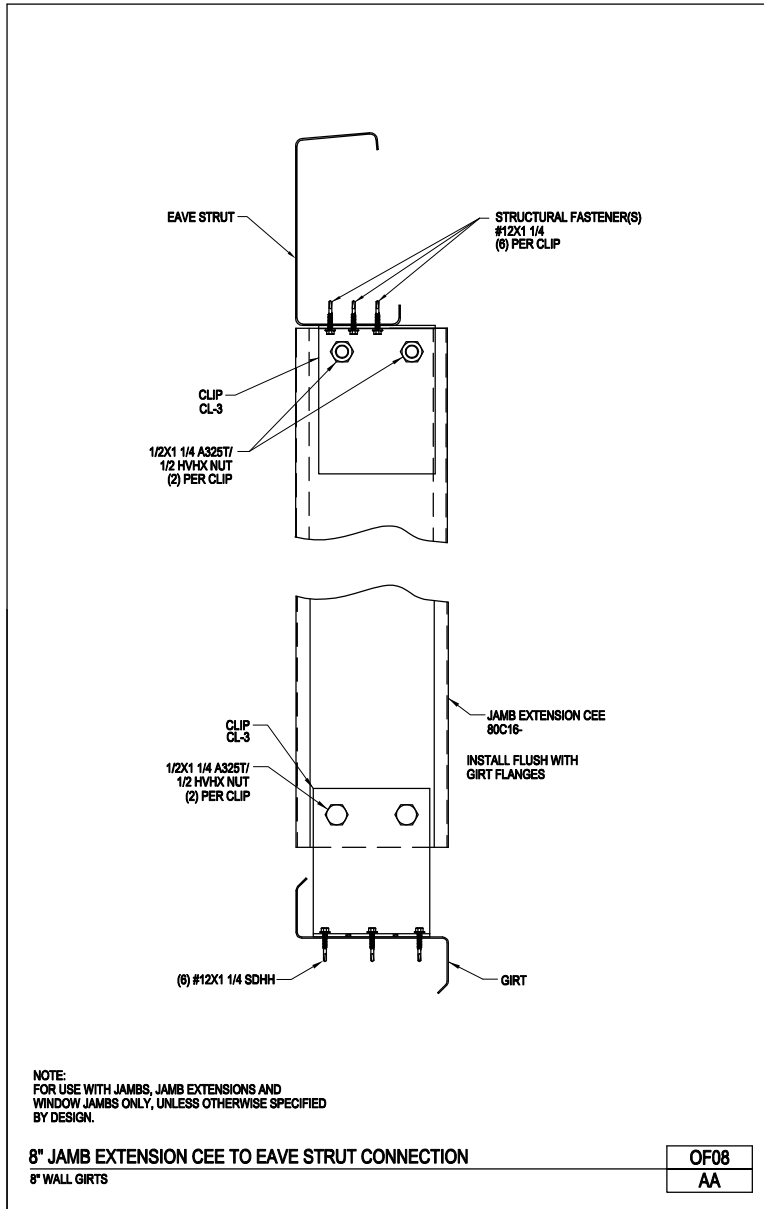
OF07/AA



[Download the DWG file by clicking here.](#)

[To Section Index](#)

8" Jamb Extension Cee to Eave Strut Connection  
8" Wall Girts  
OF08/AA

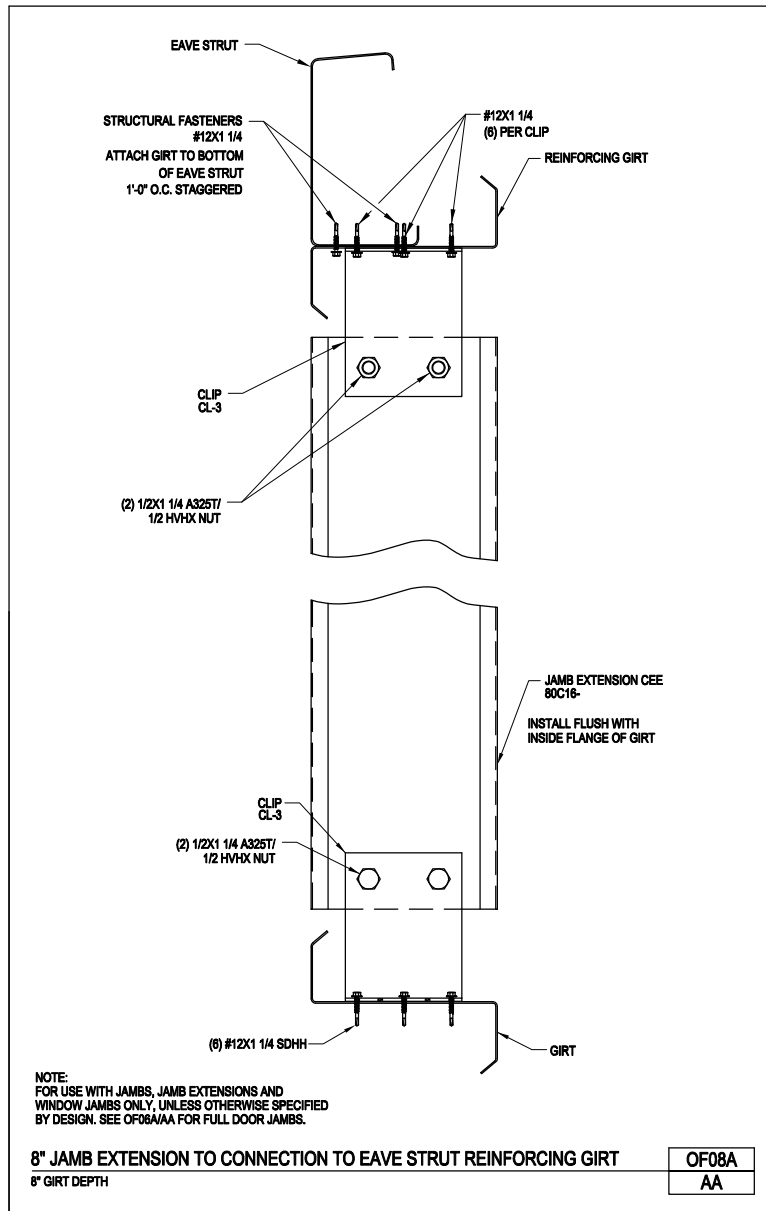


[Download the DWG file by clicking here.](#)

## 8" Jamb Extension to Connection to Eave Strut Reinforcing Girt

8" Girt Depth

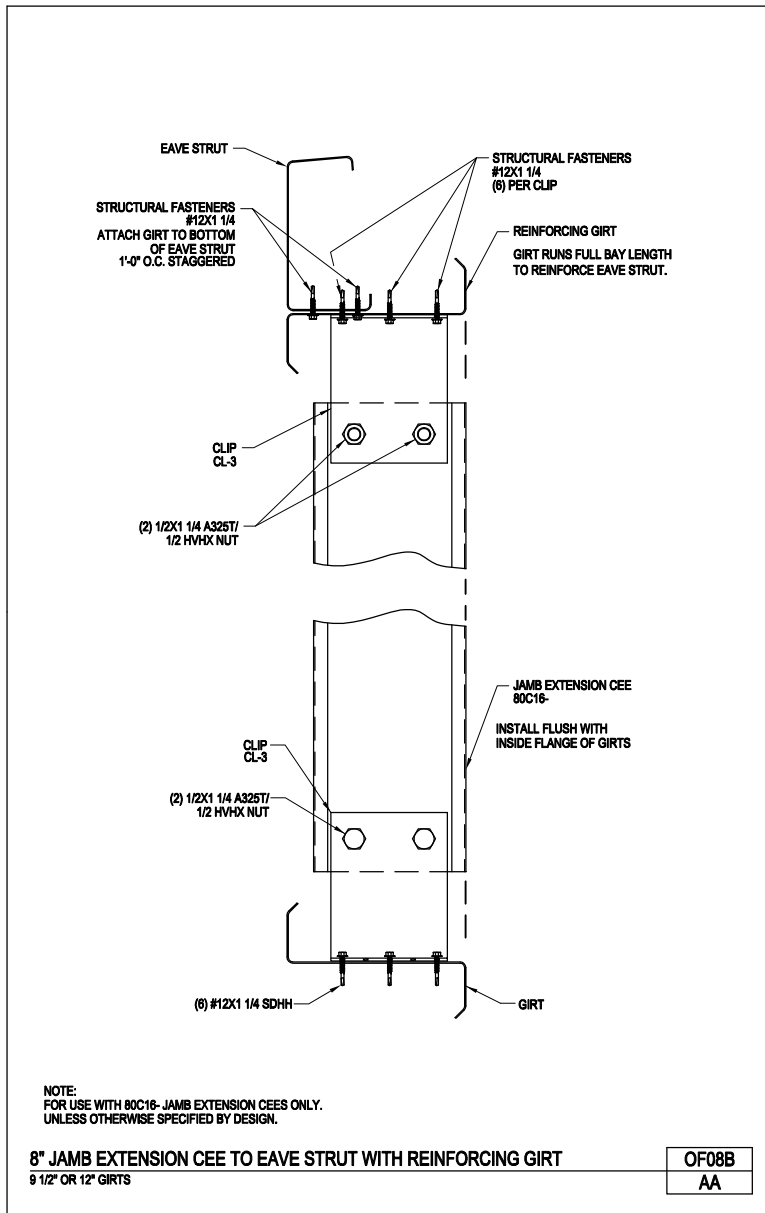
OF08A/AA



[Download the DWG file by clicking here.](#)

[To Section Index](#)

8" Jamb Extension Cee to Eave Strut With Reinforcing Girt  
 9 1/2" or 12" Girts  
 OF08B/AA

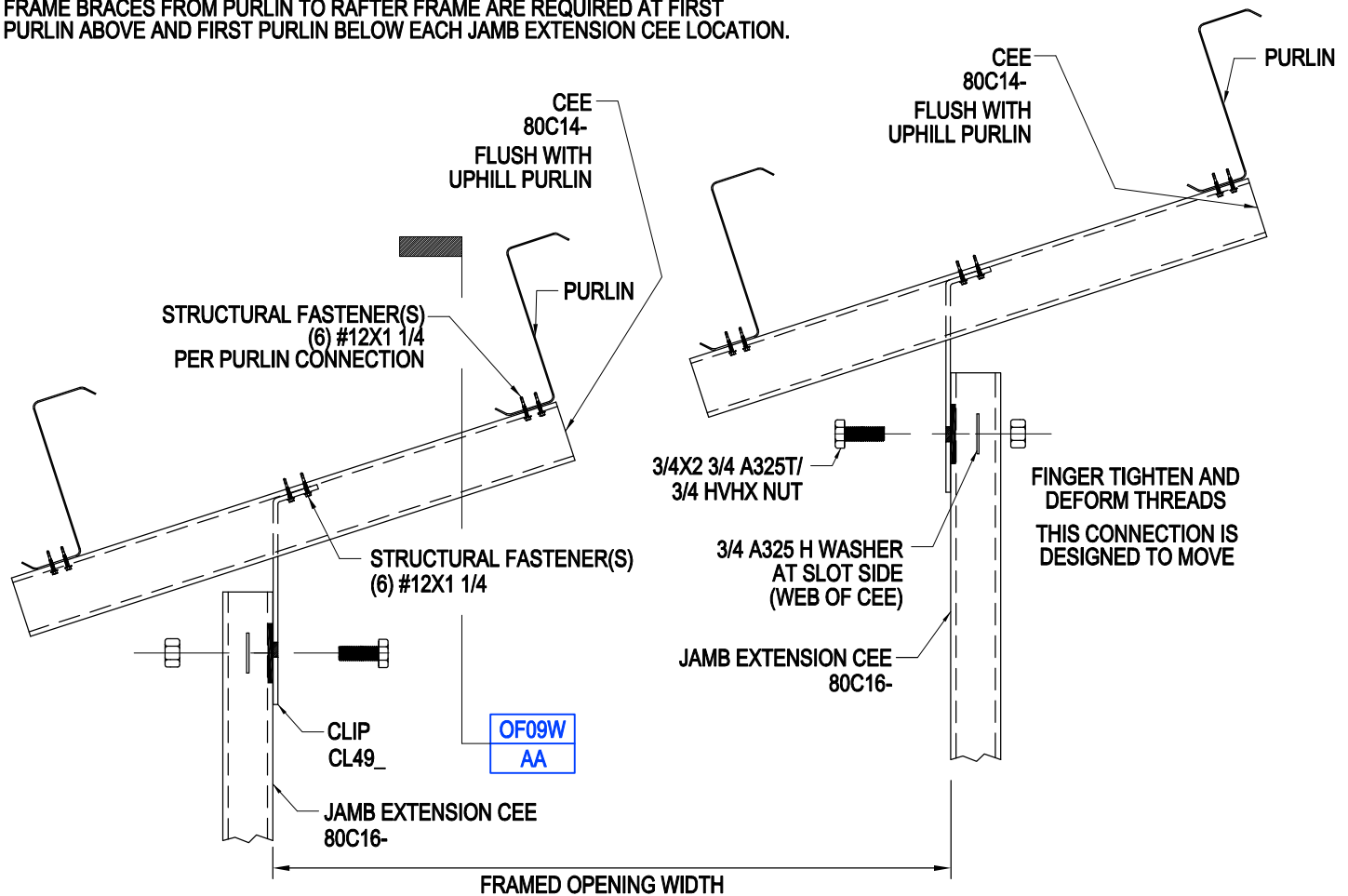


[Download the DWG file by clicking here.](#)



Endwall View at 80C16- Jamb Extension Cee to Bottom of Purlin  
 Rigid Frame Endwall (Inset/Flush/Bypass Girts) Beam & Column Endwall (Bypass Girts)  
 OF09/AA

**NOTE:**  
 FRAME BRACES FROM PURLIN TO RAFTER FRAME ARE REQUIRED AT FIRST  
 PURLIN ABOVE AND FIRST PURLIN BELOW EACH JAMB EXTENSION CEE LOCATION.



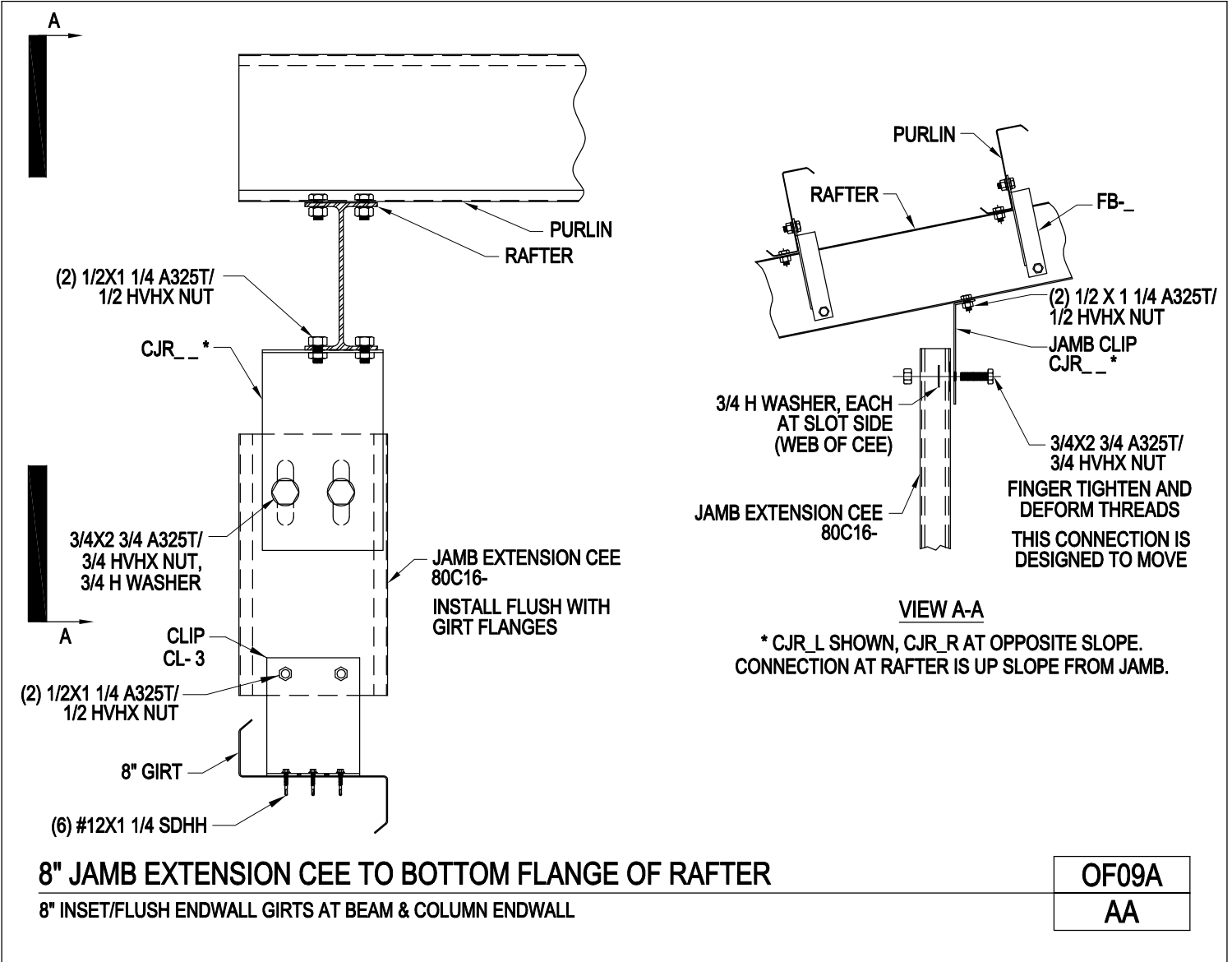
**ENDWALL VIEW AT 80C16- JAMB EXTENSION CEE TO BOTTOM OF PURLIN**  
 RIGID FRAME ENDWALL (INSET/FLUSH/BYPASS GIRTS) / BEAM & COLUMN ENDWALL (BYPASS GIRTS)

|      |
|------|
| OF09 |
| AA   |

[Download the DWG file by clicking here.](#)

[To Section Index](#)

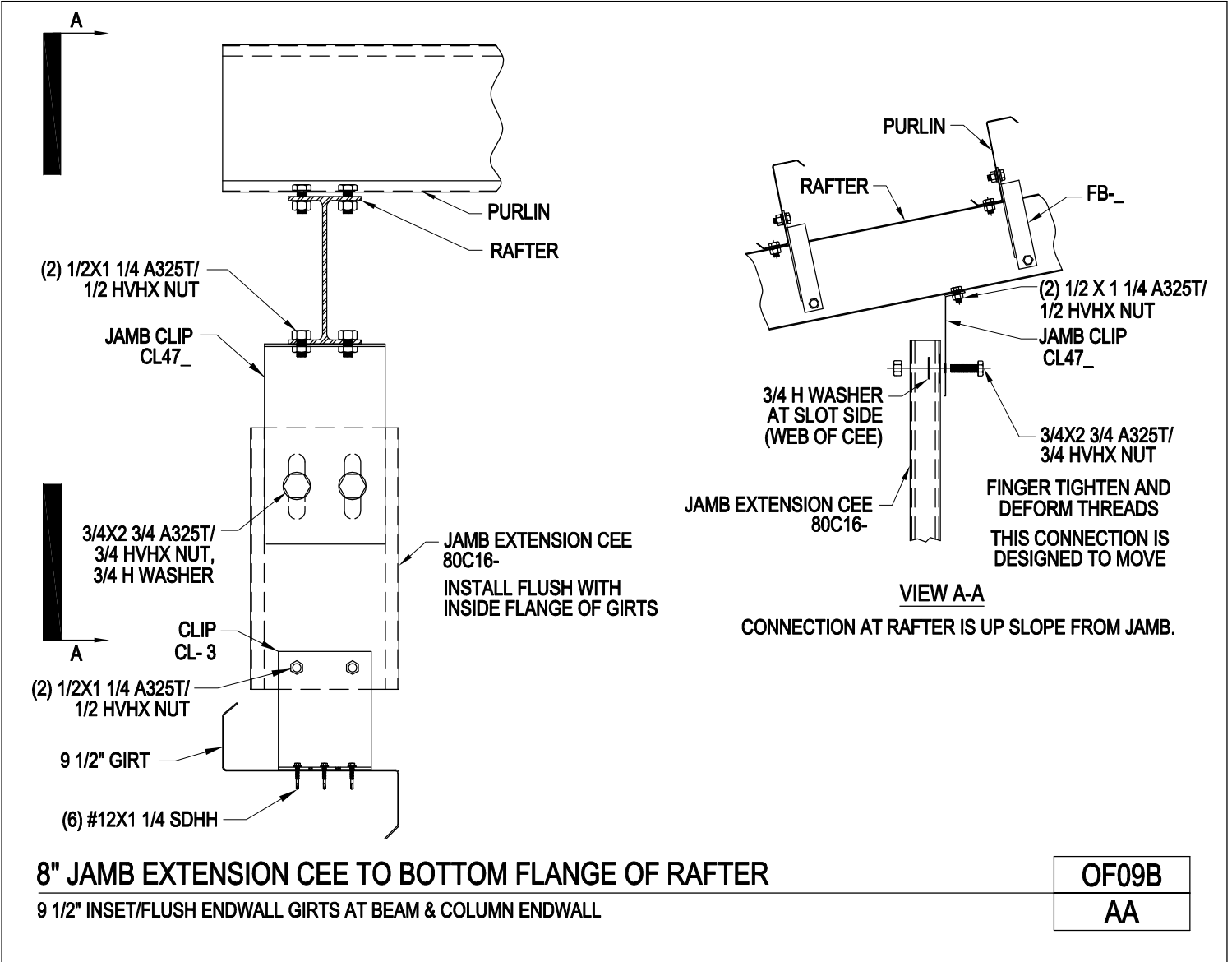
8" Jamb Extension Cee to Bottom Flange of Rafter  
 8" Inset/Flush Endwall Girts at Beam & Column Endwall  
 OF09A/AA



[Download the DWG file by clicking here.](#)

[To Section Index](#)

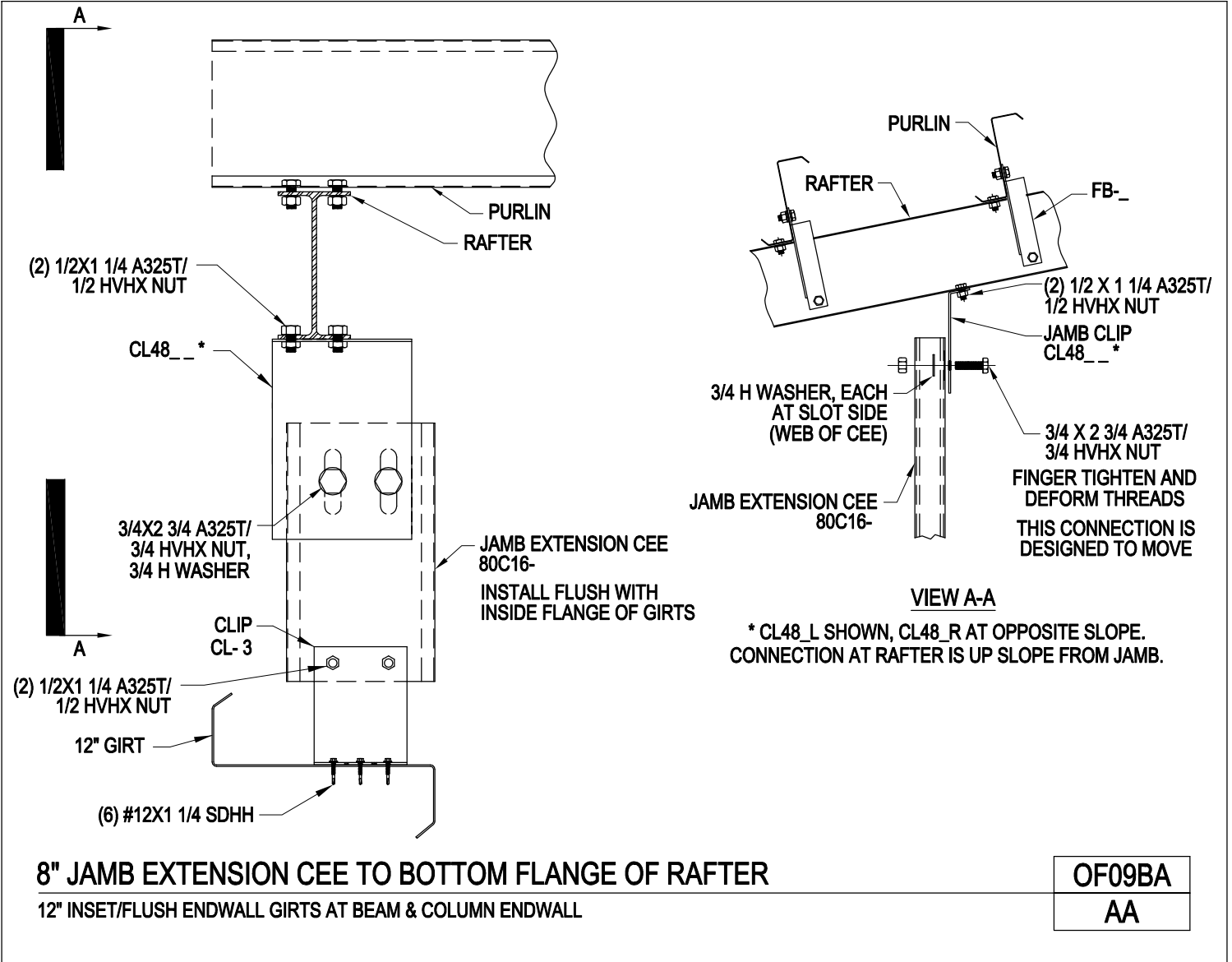
8" Jamb Extension Cee to Bottom Flange of Rafter  
 9 1/2" Inset /Flush Endwall Girts at Beam & Column Endwall  
 OF09B/AA



[Download the DWG file by clicking here.](#)

[To Section Index](#)

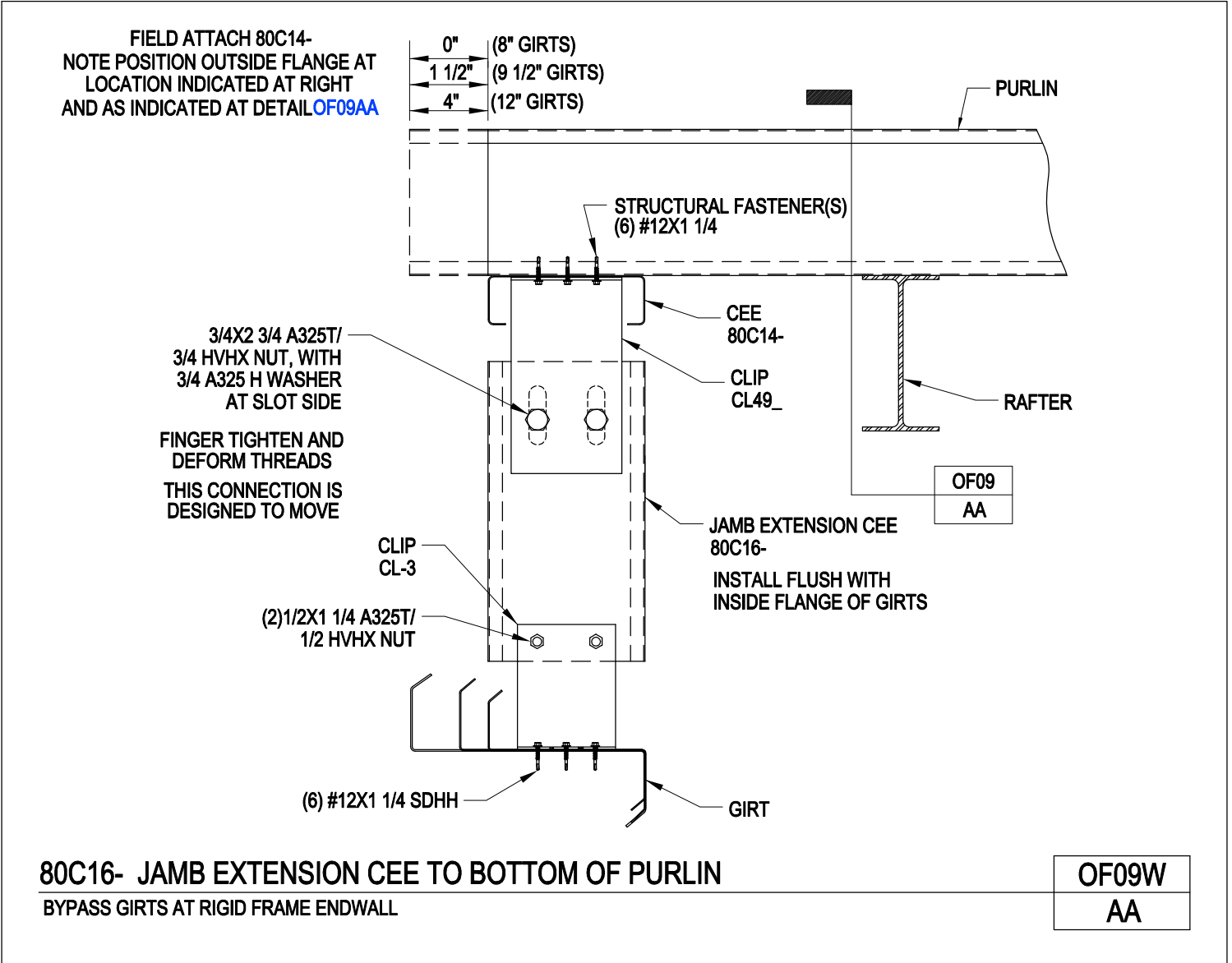
8" Jamb Extension Cee to Bottom Flange of Rafter  
 12" Inset/Flush Endwall Girts at Beam & Column Endwall  
 OF09BA/AA



[Download the DWG file by clicking here.](#)

[To Section Index](#)

80C16- Jamb Extension Cee to Bottom of Purlin  
Bypass Girts at Rigid Frame Endwall  
OF09W/AA

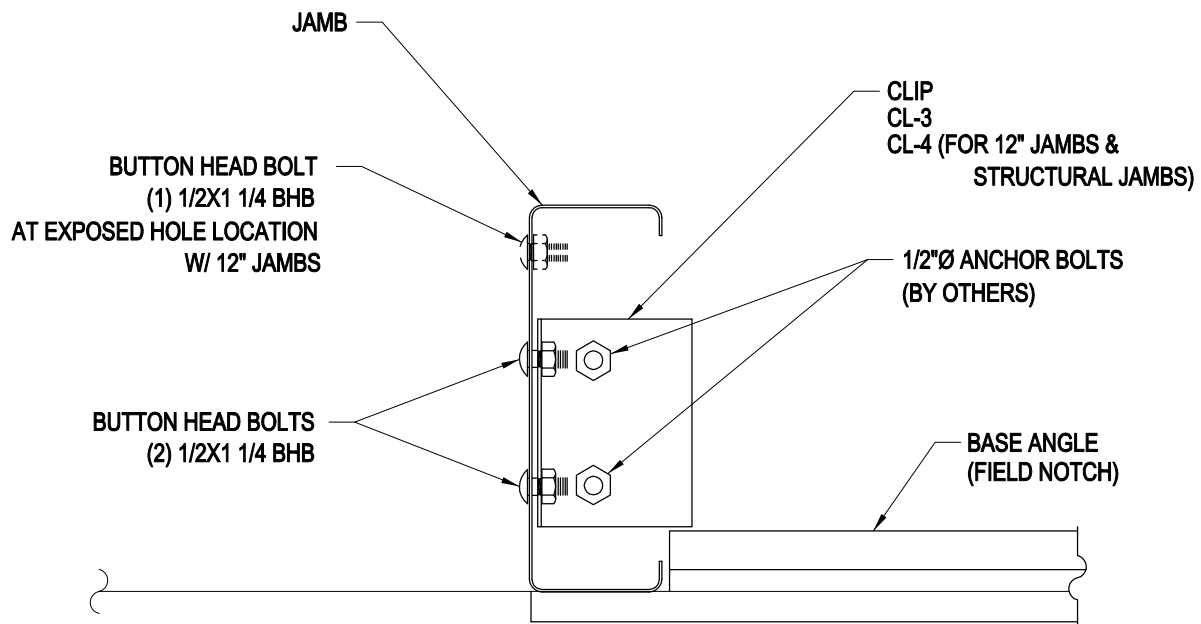


[Download the DWG file by clicking here.](#)

[To Section Index](#)

Jamb Base Connection

OF11/AA



**JAMB BASE CONNECTION**

|             |
|-------------|
| <b>OF11</b> |
| <b>AA</b>   |

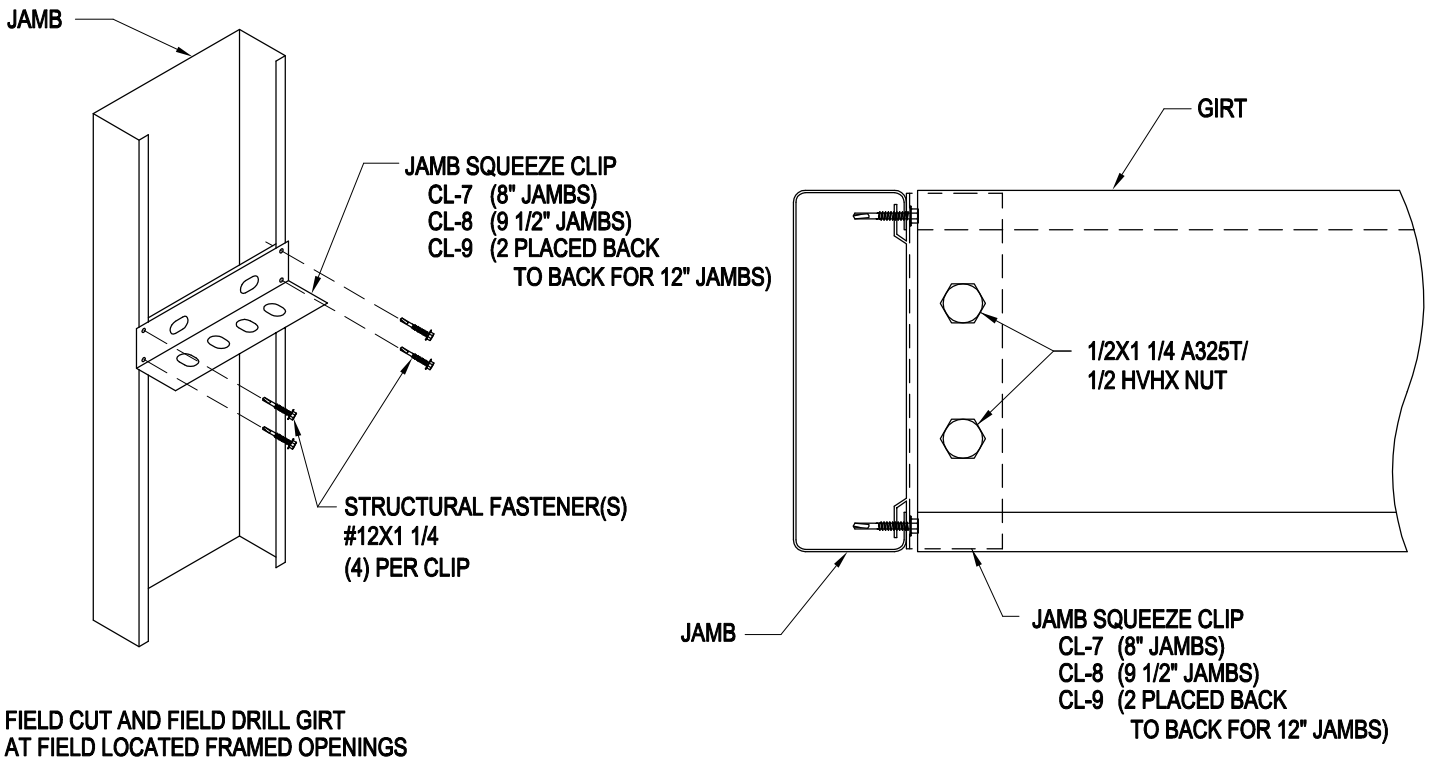
[Download the DWG file by clicking here.](#)

[To Section Index](#)

Girt to Jamb Connection

OF16/AA

**SAFETY PRECAUTION:**  
DO NOT STEP, SIT OR CLIMB ON WALL  
GIRTS OR EAVE STRUTS. FAILURE TO ADHERE  
TO THIS PRECAUTION MAY RESULT IN A  
SERIOUS INJURY.



## GIRT TO JAMB CONNECTION

|      |
|------|
| OF16 |
| AA   |

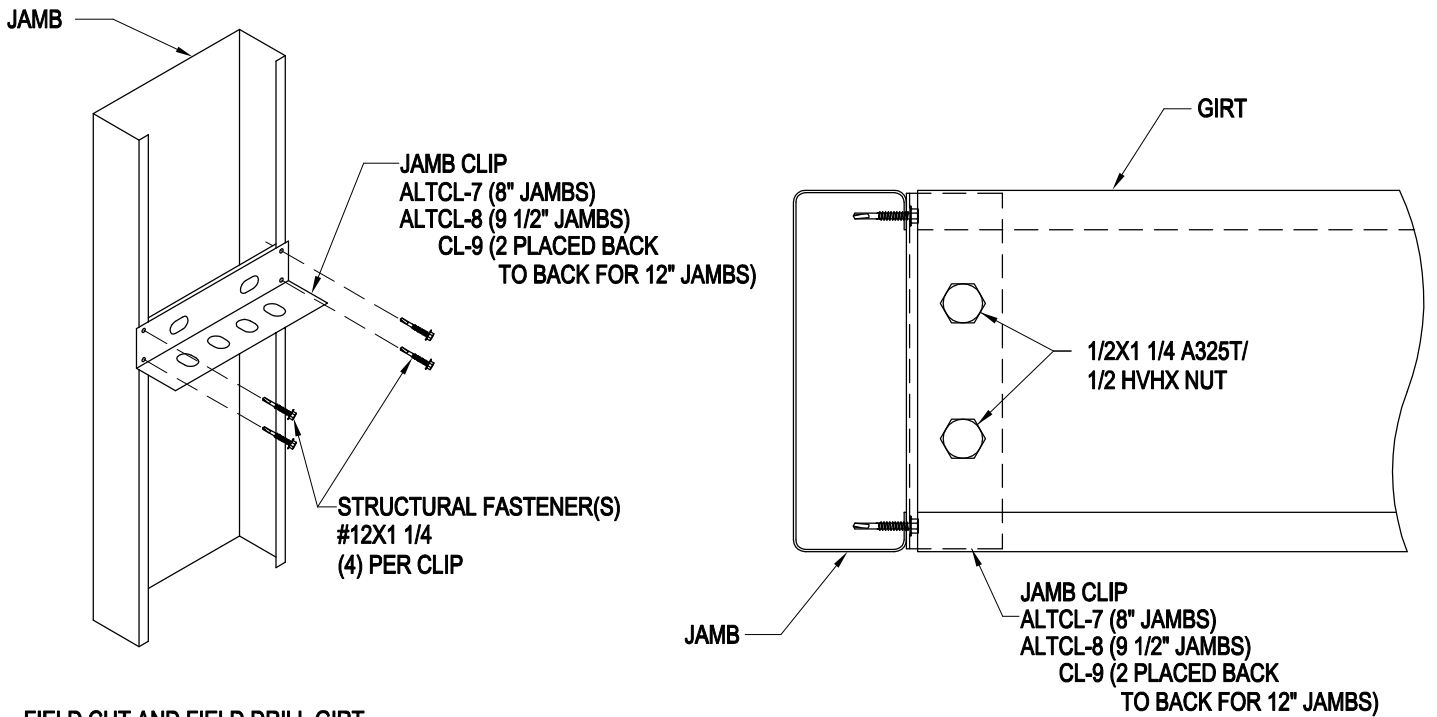
[Download the DWG file by clicking here.](#)

[To Section Index](#)

Girt to Jamb Connection

OF16A/AA

**SAFETY PRECAUTION:**  
DO NOT STEP, SIT OR CLIMB ON WALL  
GIRTS OR EAVE STRUTS. FAILURE TO ADHERE  
TO THIS PRECAUTION MAY RESULT IN A  
SERIOUS INJURY.



FIELD CUT AND FIELD DRILL GIRT  
AT FIELD LOCATED FRAMED OPENINGS

## GIRT TO JAMB CONNECTION

|       |
|-------|
| OF16A |
| AA    |

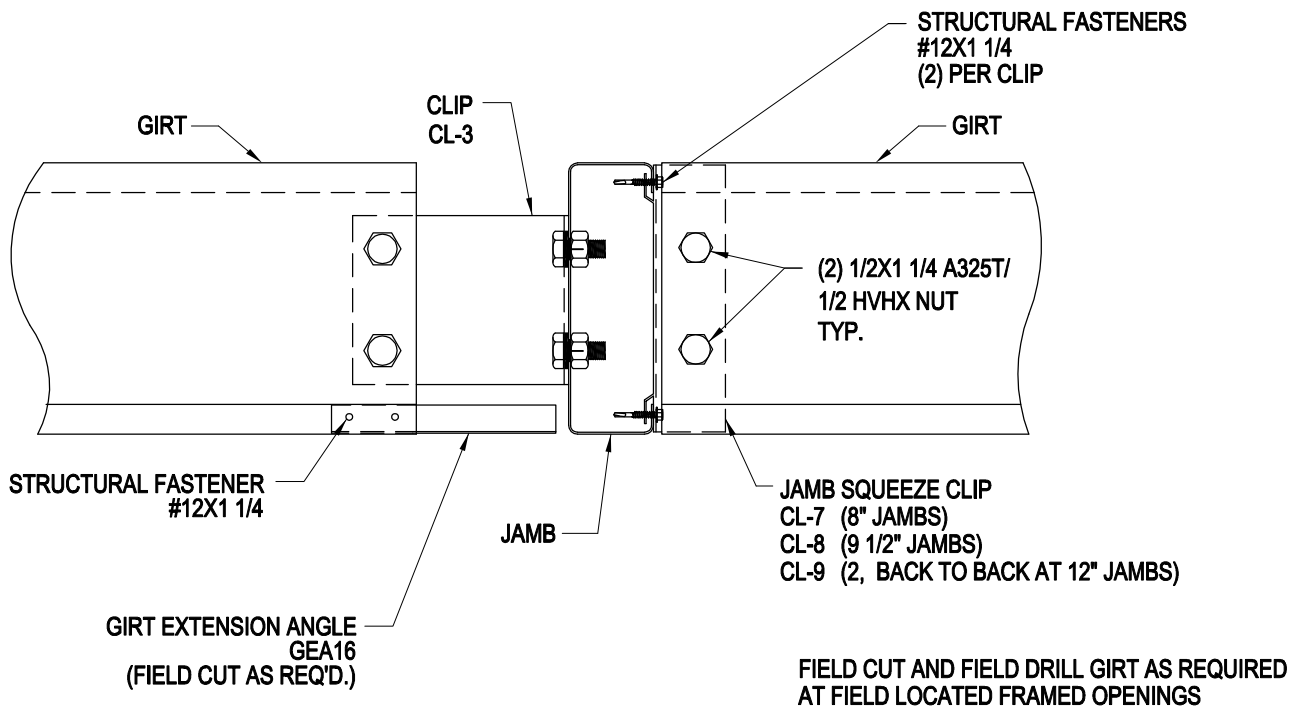
[Download the DWG file by clicking here.](#)

[To Section Index](#)



Connection at Girt (Above/Below Opening) to Jamb  
Girt to Jamb Connection  
OF16B/AA

**SAFETY PRECAUTION:**  
DO NOT STEP, SIT OR CLIMB ON WALL  
GIRTS OR EAVE STRUTS. FAILURE TO ADHERE  
TO THIS PRECAUTION MAY RESULT IN A  
SERIOUS INJURY.



**CONNECTION AT GIRT (ABOVE/BELOW OPENING) TO JAMB**

GIRT TO JAMB CONNECTION

**OF16B**

**AA**

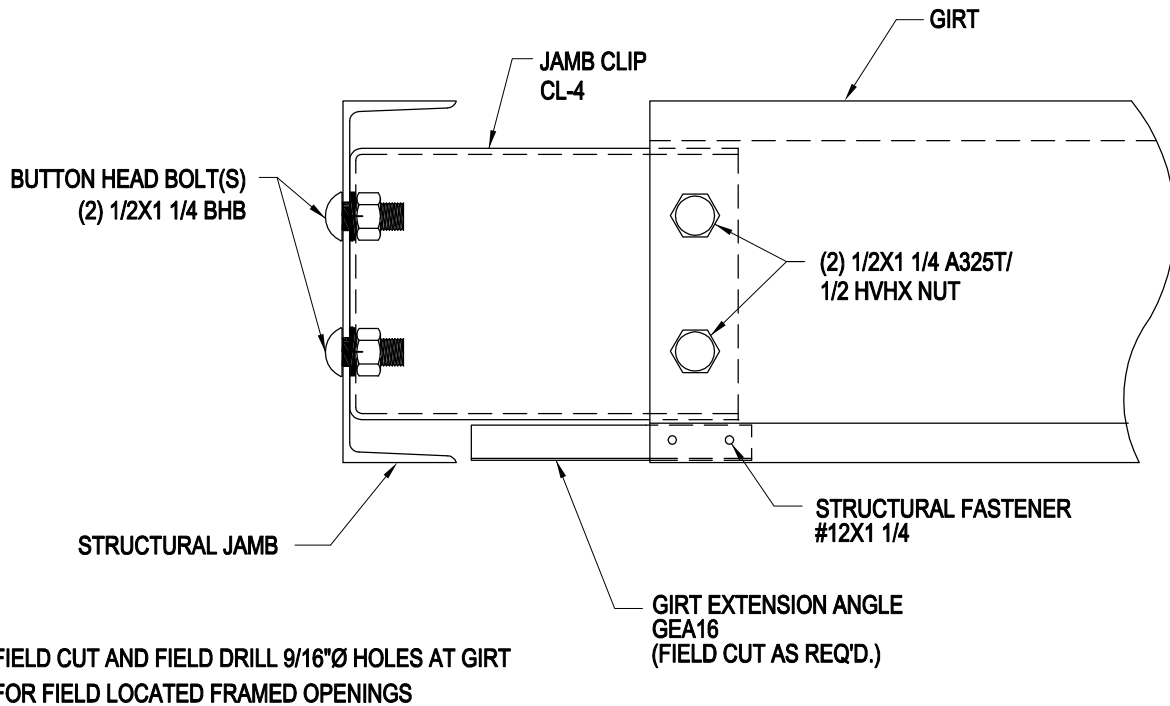
[Download the DWG file by clicking here.](#)

[To Section Index](#)

## Girt to Structural Jamb Connection

OF16W/AA

**SAFETY PRECAUTION:**  
DO NOT STEP, SIT OR CLIMB ON WALL  
GIRTS OR EAVE STRUTS. FAILURE TO ADHERE  
TO THIS PRECAUTION MAY RESULT IN A  
SERIOUS INJURY.



## GIRT TO STRUCTURAL JAMB CONNECTION

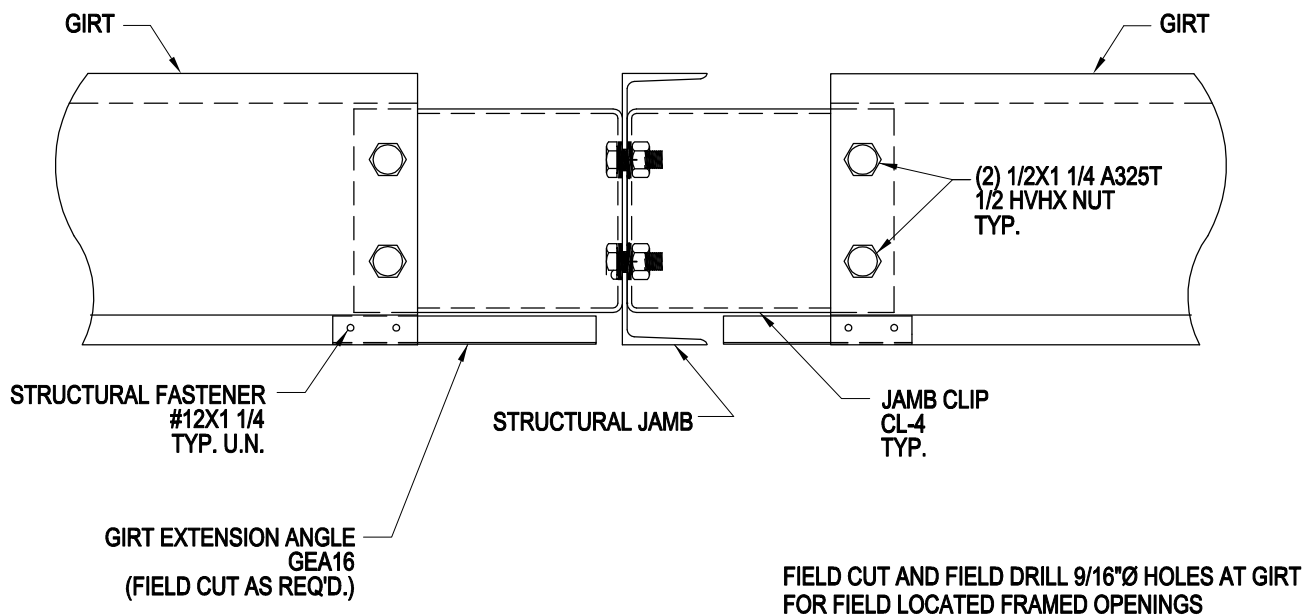
|       |
|-------|
| OF16W |
| AA    |

[Download the DWG file by clicking here.](#)

[To Section Index](#)

Connection at Girt (Above/Below Opening) to Structural Jamb  
 Girt to Structural Jamb Connection  
 OF16WB/AA

**SAFETY PRECAUTION:**  
 DO NOT STEP, SIT OR CLIMB ON WALL  
 GIRTS OR EAVE STRUTS. FAILURE TO ADHERE  
 TO THIS PRECAUTION MAY RESULT IN A  
 SERIOUS INJURY.



**CONNECTION AT GIRT (ABOVE/BELOW OPENING) TO STRUCTURAL JAMB**

GIRT TO STRUCTURAL JAMB CONNECTION

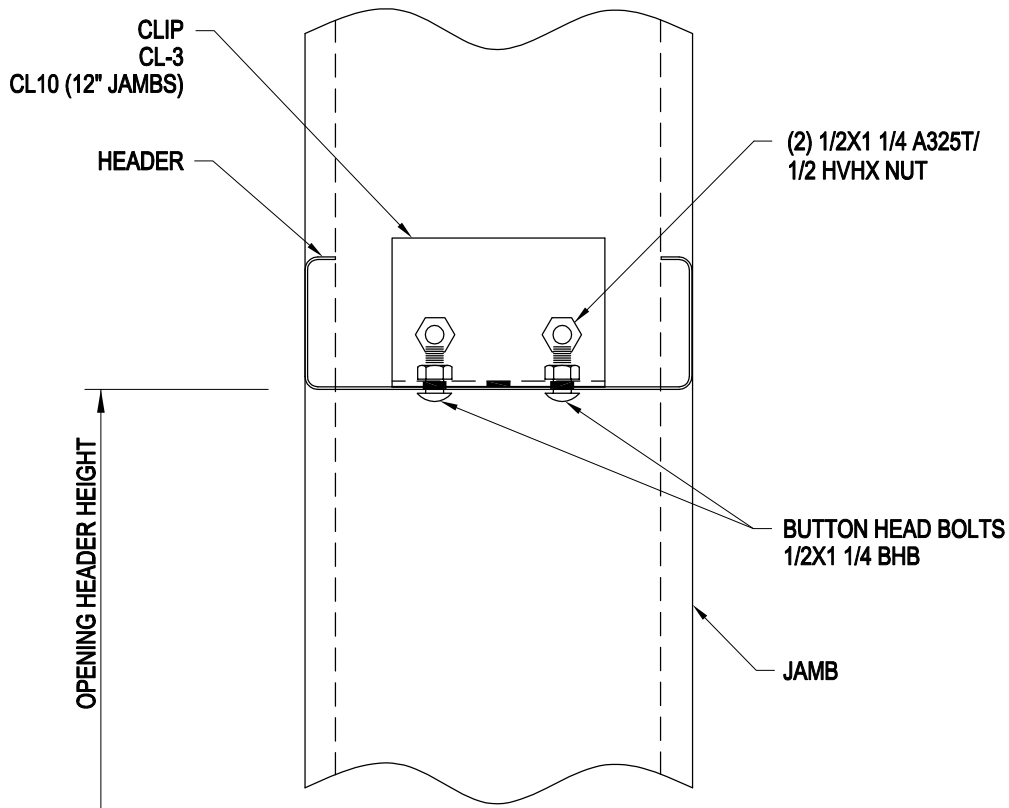
**OF16WB**

**AA**

[Download the DWG file by clicking here.](#)

[To Section Index](#)

Header to Jamb Connection  
Similar at Sill  
OF21/AA



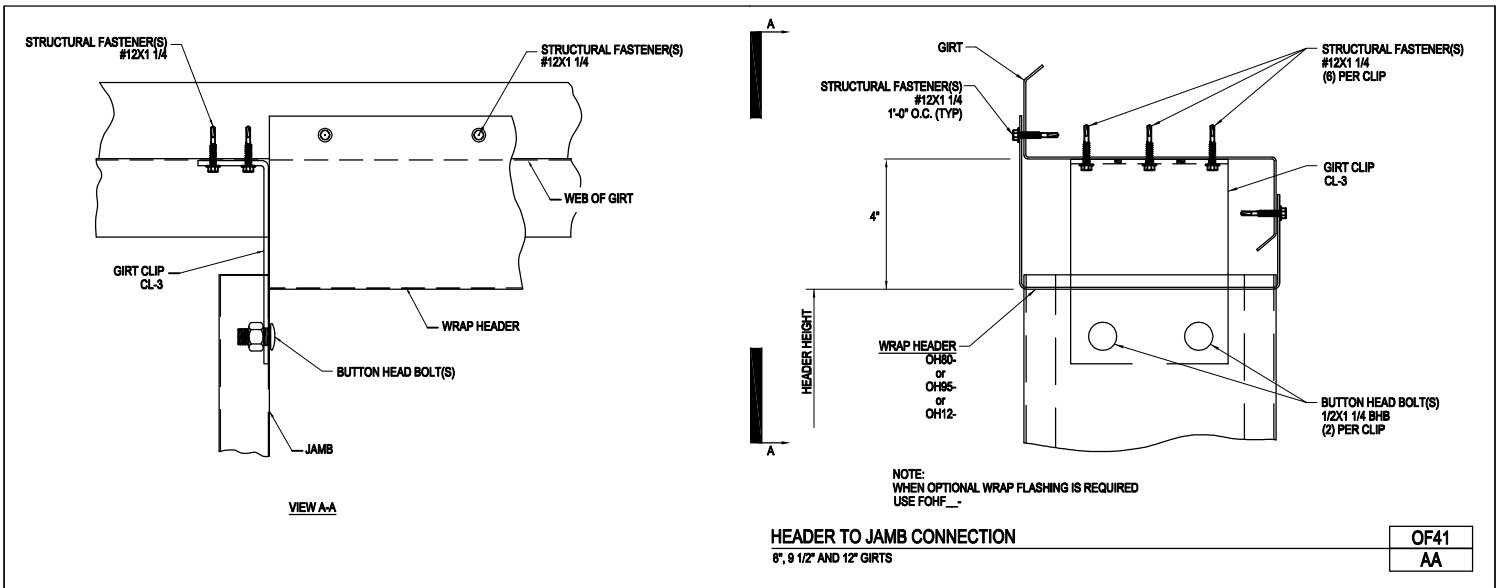
**HEADER TO JAMB CONNECTION**  
SIMILAR AT SILL

|             |
|-------------|
| <b>OF21</b> |
| <b>AA</b>   |

[Download the DWG file by clicking here.](#)

[To Section Index](#)

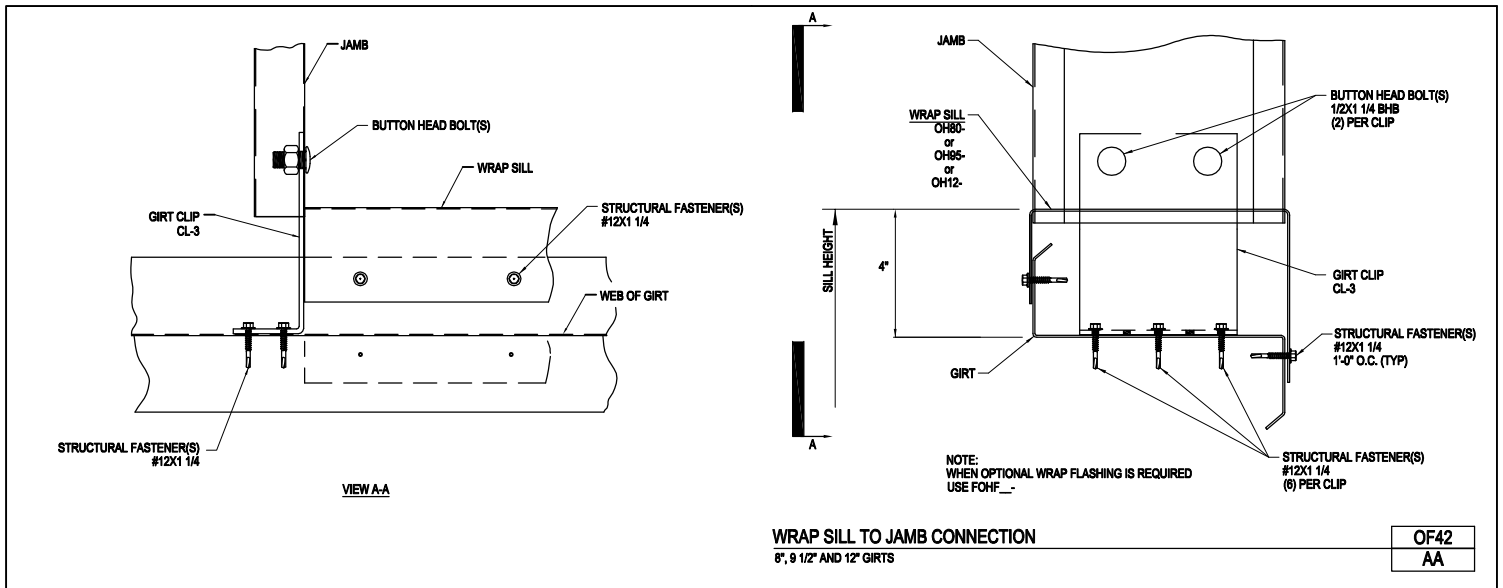
Header to Jamb Connection  
8", 9 1/2" and 12" Girts  
OF41/AA



[Download the DWG file by clicking here.](#)

[To Section Index](#)

Wrap Sill to Jamb Connection  
8", 9 1/2" and 12" Girts  
OF42/AA

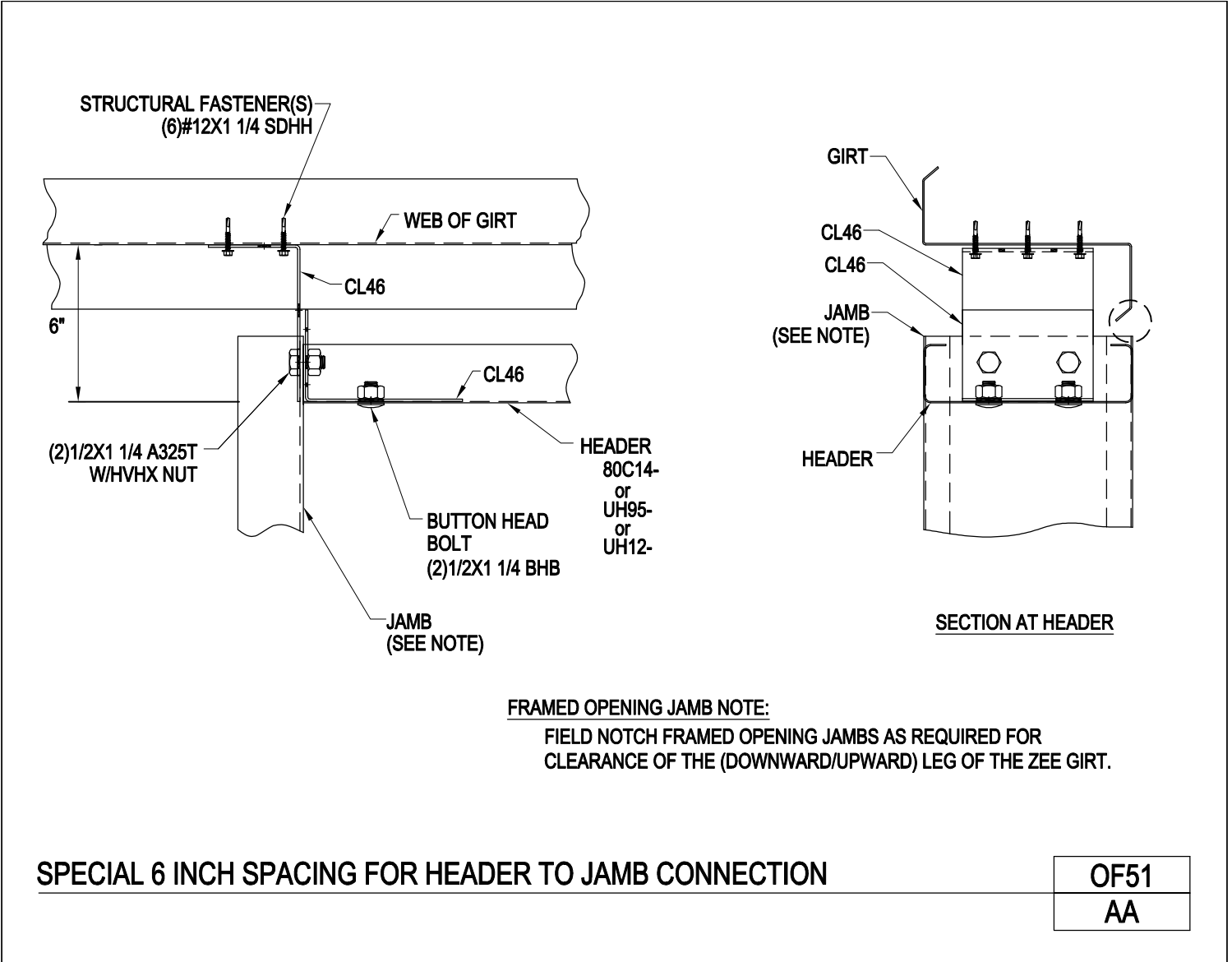


[Download the DWG file by clicking here.](#)

[To Section Index](#)

Special 6" Spacing for Header to Jamb Connection

OF51/AA



[Download the DWG file by clicking here.](#)

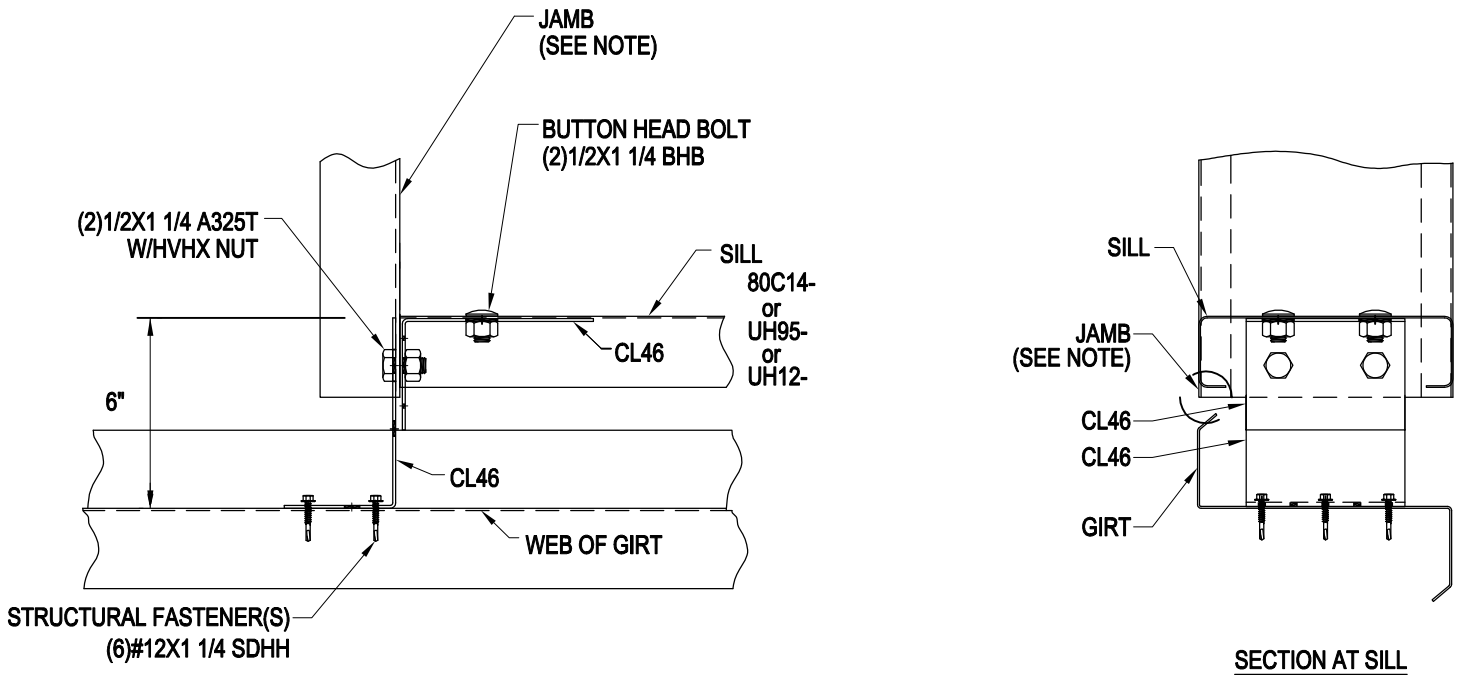
[To Section Index](#)

Special 6" Spacing for Sill to Jamb Connection

OF52/AA

**FRAMED OPENING JAMB NOTE:**

FIELD NOTCH FRAMED OPENING JAMBS AS REQUIRED FOR CLEARANCE OF THE (DOWNWARD/UPWARD) LEG OF THE ZEE GIRT.



**SPECIAL 6" SPACING FOR SILL TO JAMB CONNECTION**

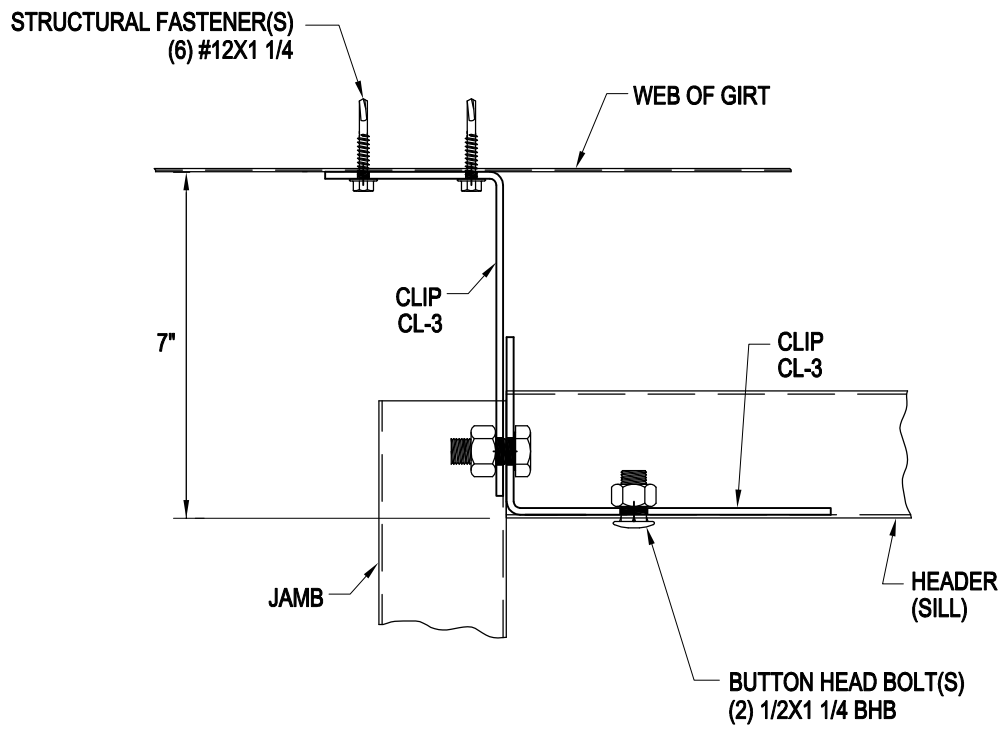
|      |
|------|
| OF52 |
| AA   |

[Download the DWG file by clicking here.](#)

[To Section Index](#)



Special 7" Spacing for Header to Jamb Connection  
Header Shown, Similar at Sill  
OF53/AA



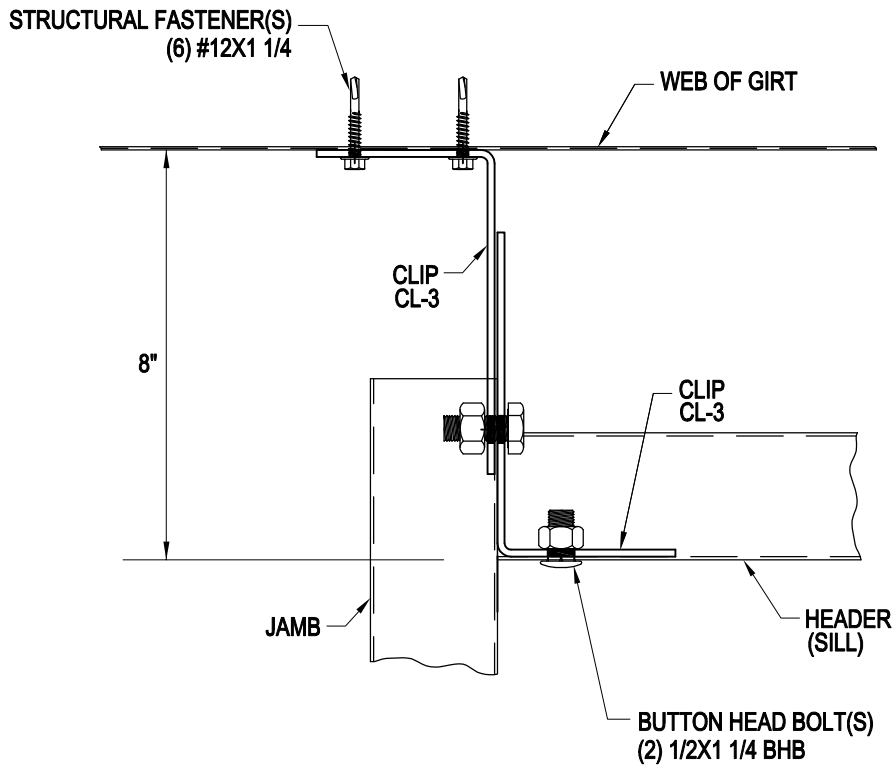
**SPECIAL 7" SPACING FOR HEADER TO JAMB CONNECTION**  
HEADER SHOWN, SIMILAR AT SILL

|      |
|------|
| OF53 |
| AA   |

[Download the DWG file by clicking here.](#)

[To Section Index](#)

Special 8" Spacing for Header to Jamb Connection  
Header Shown, Similar at Sill  
OF54/AA



**SPECIAL 8" SPACING FOR HEADER TO JAMB CONNECTION**  
HEADER SHOWN, SIMILAR AT SILL

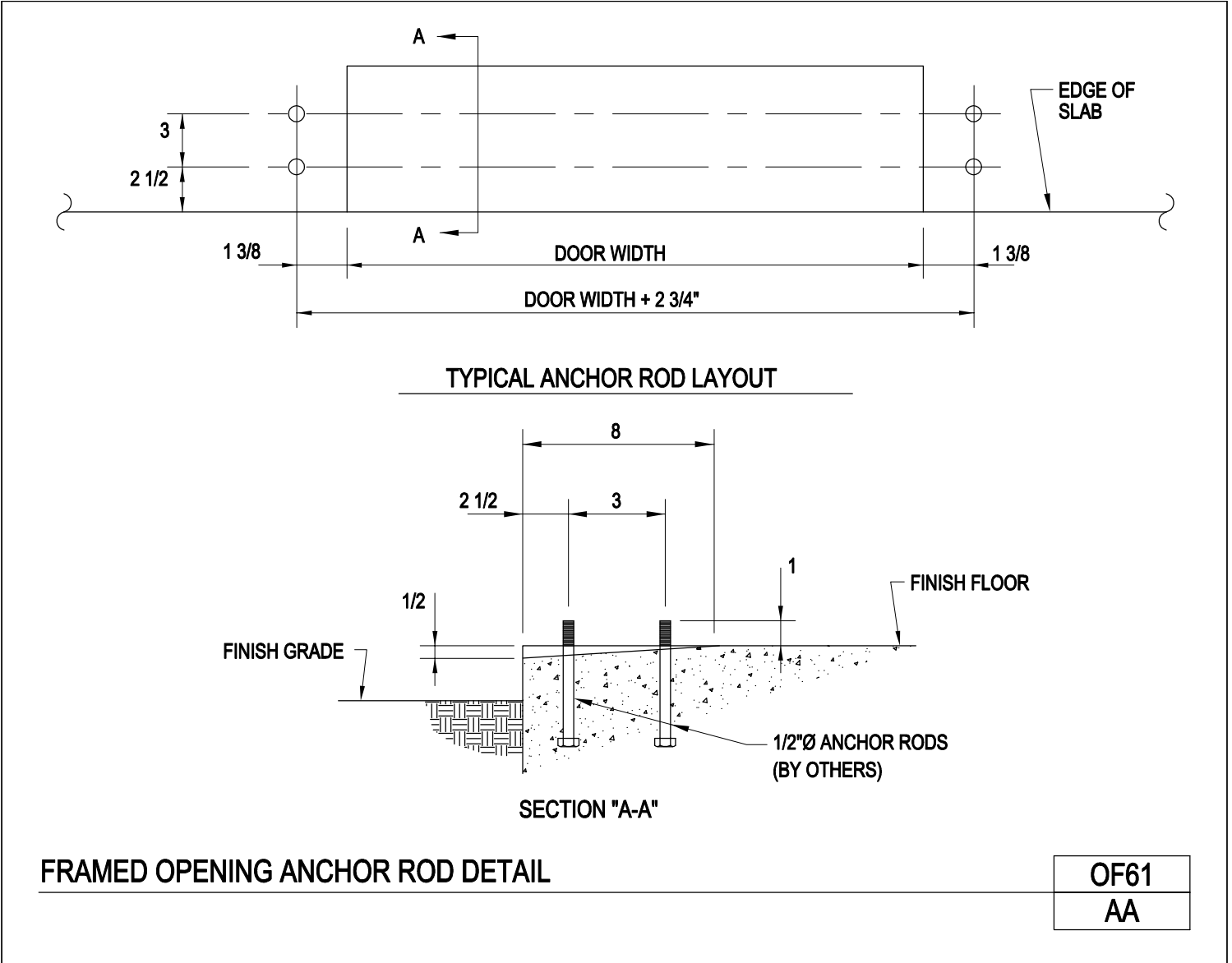
|      |
|------|
| OF54 |
| AA   |

[Download the DWG file by clicking here.](#)

[To Section Index](#)

Framed Opening Anchor Rod Detail

OF61/AA



[Download the DWG file by clicking here.](#)

[To Section Index](#)

## Field and Shop Located Framed Opening Notes

OF91/AA

### GENERAL NOTES FOR FIELD LOCATED FRAMED OPENINGS :

1. OVERHEAD DOORS ARE FIELD LOCATED. CUT STANDARD PANELS AND GIRTS AS REQUIRED.
2. MAXIMUM HEIGHT OF DOOR IS 2'-0" LESS THAN EAVE HEIGHT.
3. ALL STRUCTURAL CONNECTIONS TO BE MADE AS SHOWN ON APPROPRIATE DETAILS.
4. JAMBS MUST BE LOCATED A MINIMUM OF 1'-0" FROM CENTER LINE OF COLUMNS.

### GENERAL NOTES FOR SHOP LOCATED FRAMED OPENINGS :

1. OVERHEAD DOORS ARE SHOP LOCATED. SOME PANELS MAY REQUIRE FIELD CUTTING.
2. ALL STRUCTURAL CONNECTIONS TO BE MADE AS SHOWN ON APPROPRIATE DETAILS.

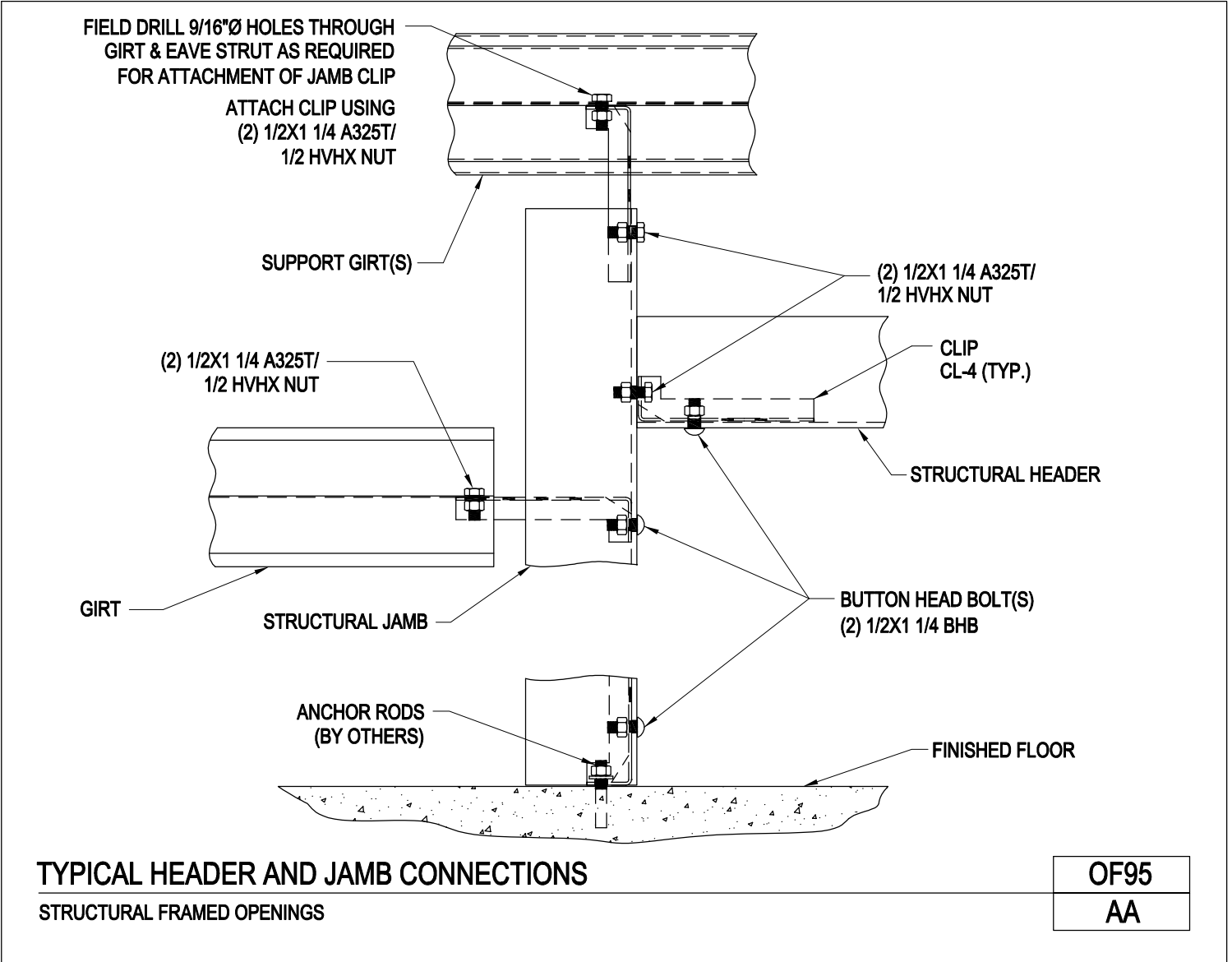
**FIELD AND SHOP LOCATED FRAMED OPENING NOTES**

|      |
|------|
| OF91 |
| AA   |

[Download the DWG file by clicking here.](#)

[To Section Index](#)

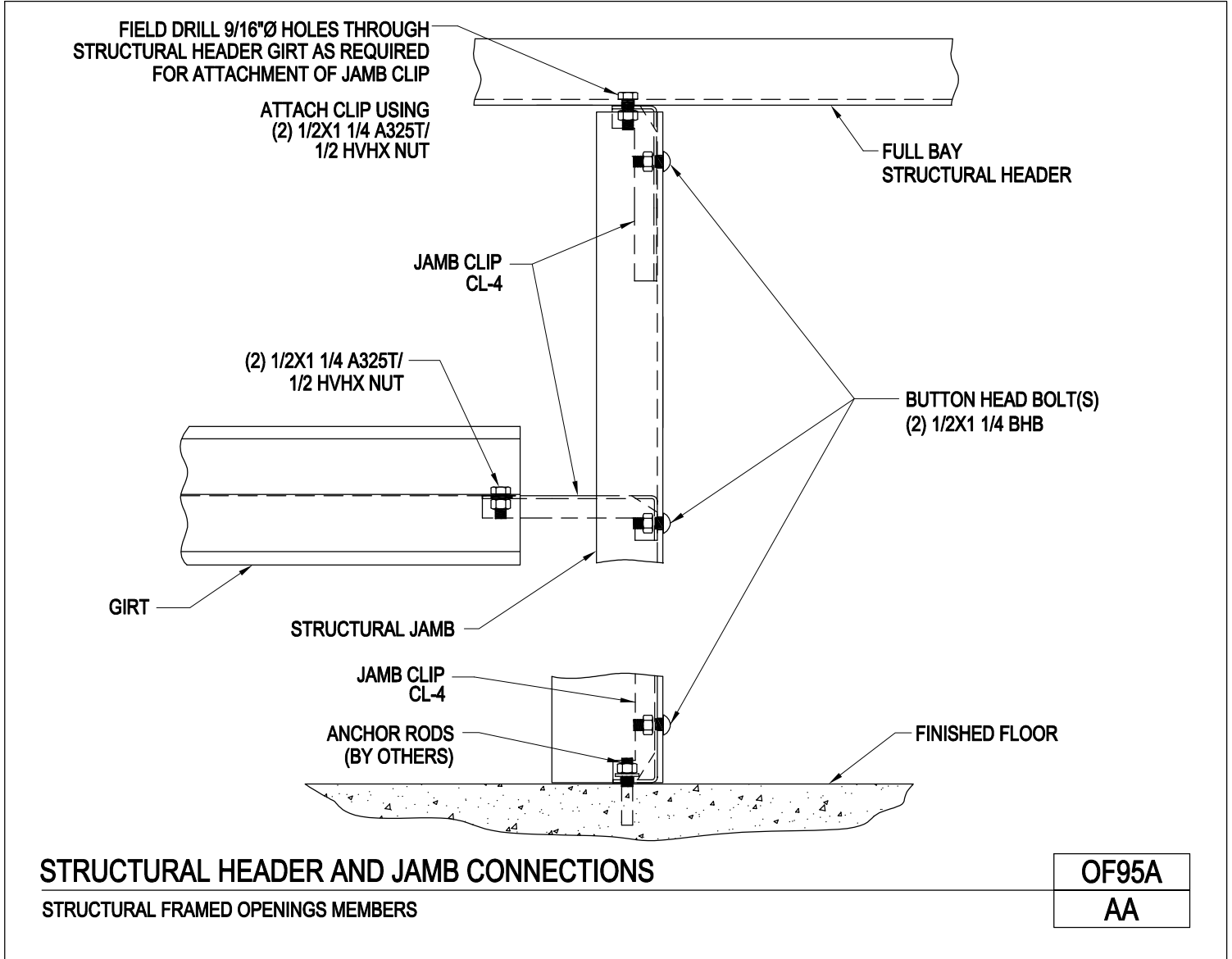
Typical Header and Jamb Connections  
Structural Framed Openings  
OF95/AA



[Download the DWG file by clicking here.](#)

[To Section Index](#)

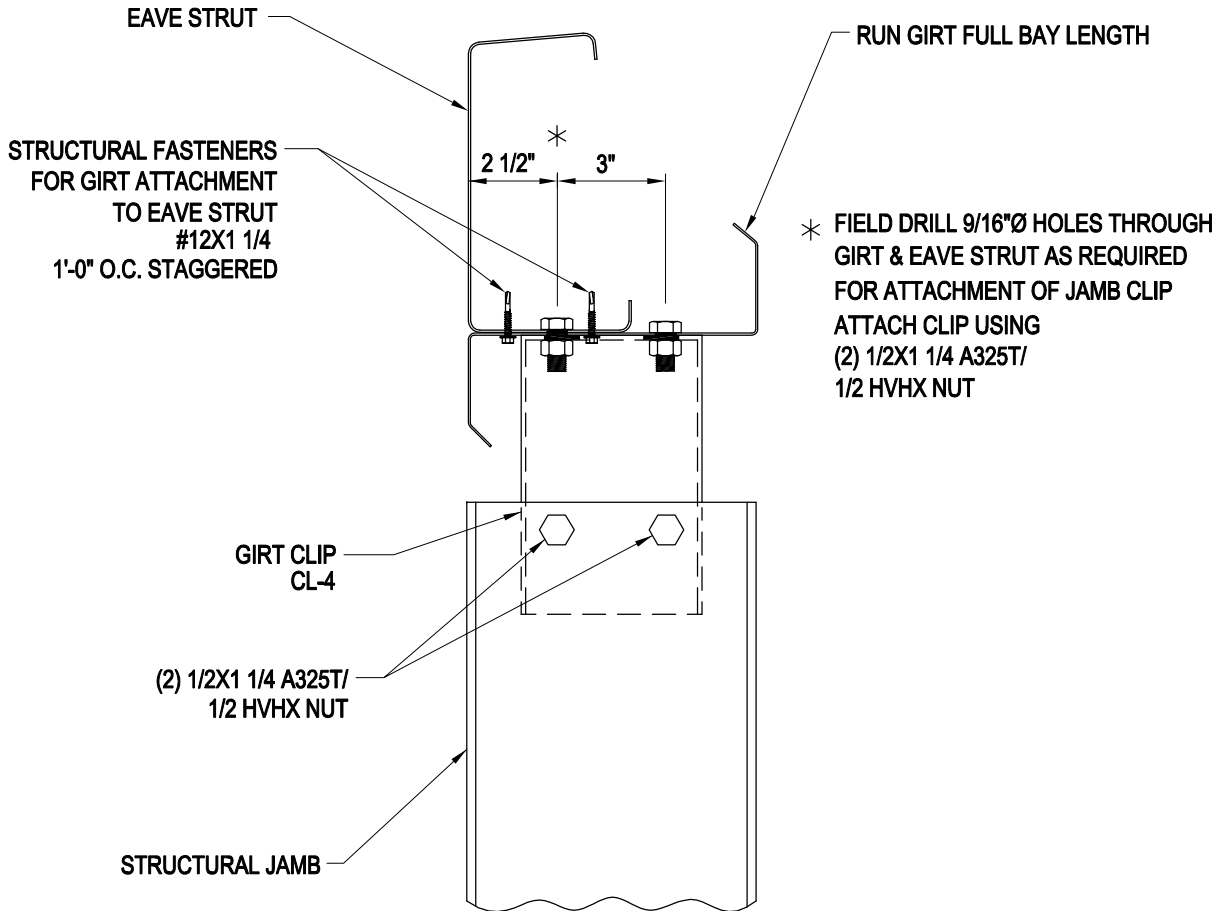
Structural Header and Jamb Connections  
Structural Framed Openings  
OF95A/AA



[Download the DWG file by clicking here.](#)

[To Section Index](#)

Jamb to Eave Strut Connection With Reinforcing Girt  
Structural Framed Opening  
OF96/AA



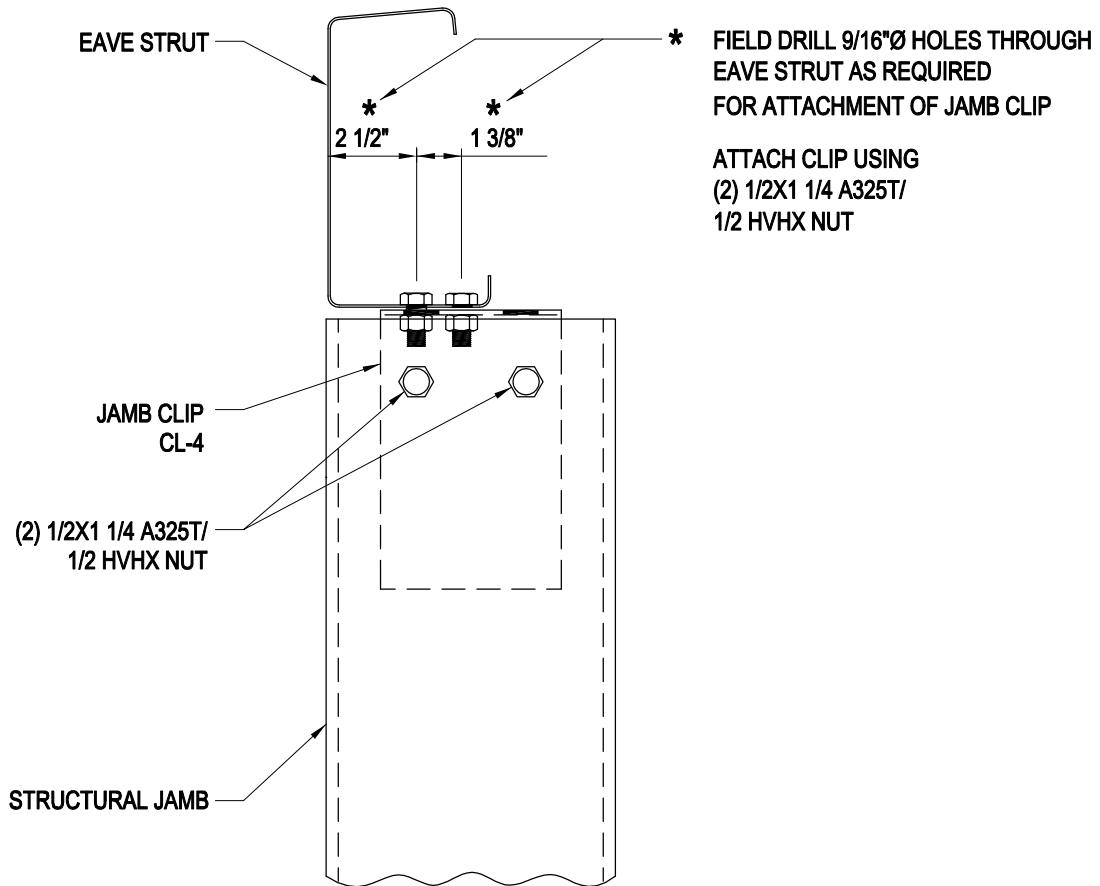
**JAMB TO EAVE STRUT CONNECTION WITH REINFORCING GIRT**  
STRUCTURAL FRAMED OPENINGS

|      |
|------|
| OF96 |
| AA   |

[Download the DWG file by clicking here.](#)

[To Section Index](#)

Structural Jamb to Eave Strut Connection  
Structural Framed Openings  
OF96A/AA



**STRUCTURAL JAMB TO EAVE STRUT CONNECTION**  
STRUCTURAL FRAMED OPENINGS

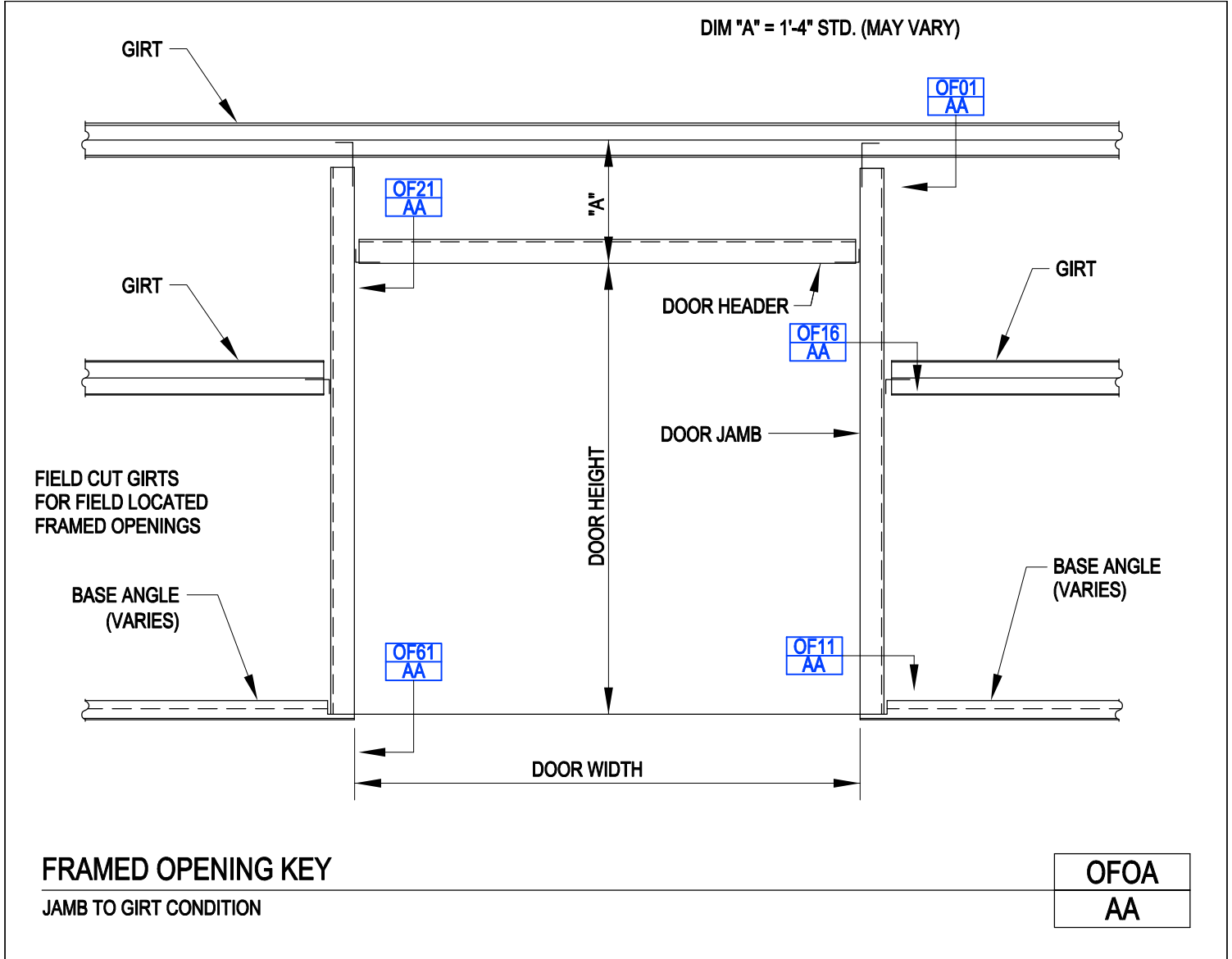
|       |
|-------|
| OF96A |
| AA    |

[Download the DWG file by clicking here.](#)

[To Section Index](#)



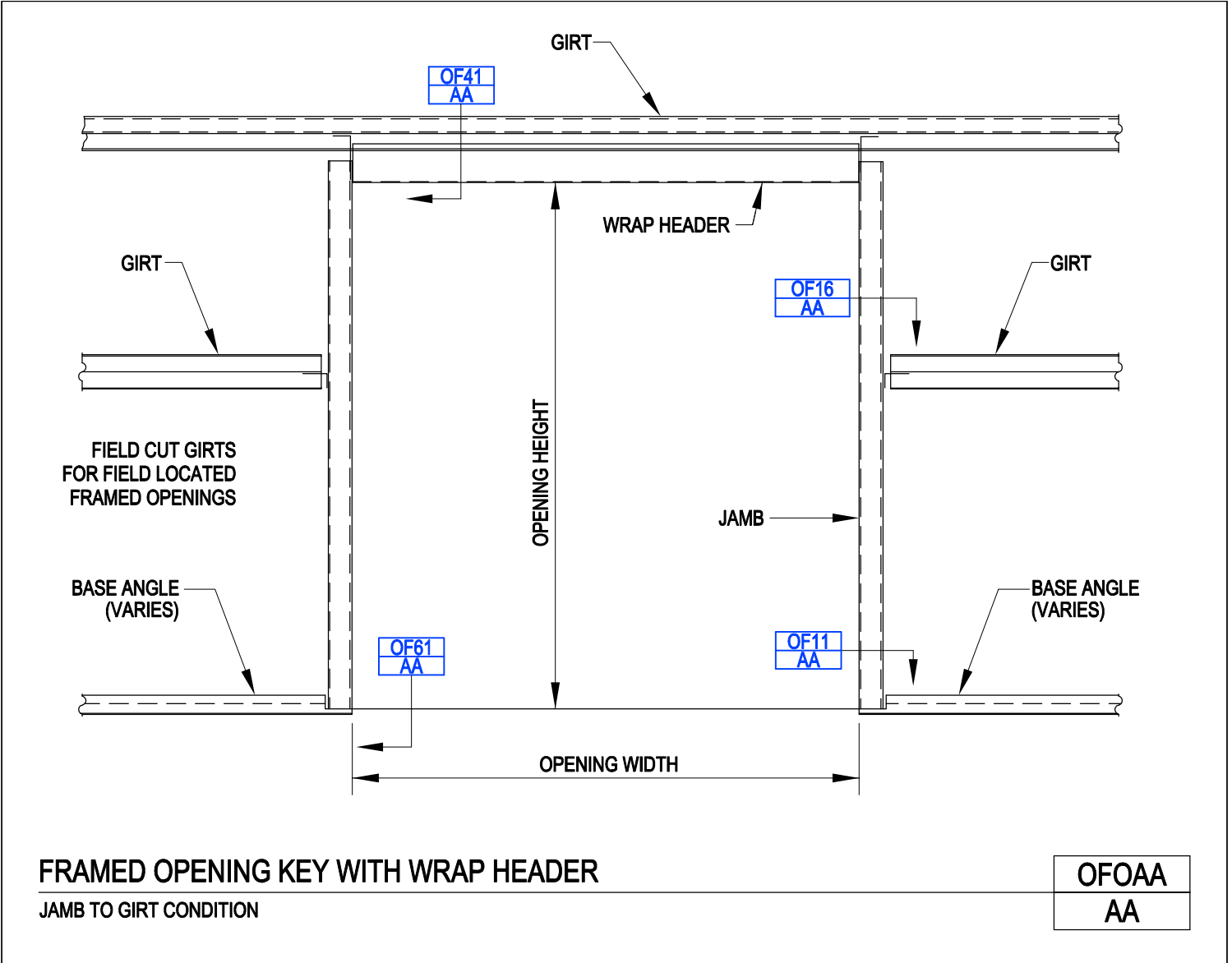
Framed Opening Key  
Jamb to Girt Condition  
OFOA/AA



[Download the DWG file by clicking here.](#)

[To Section Index](#)

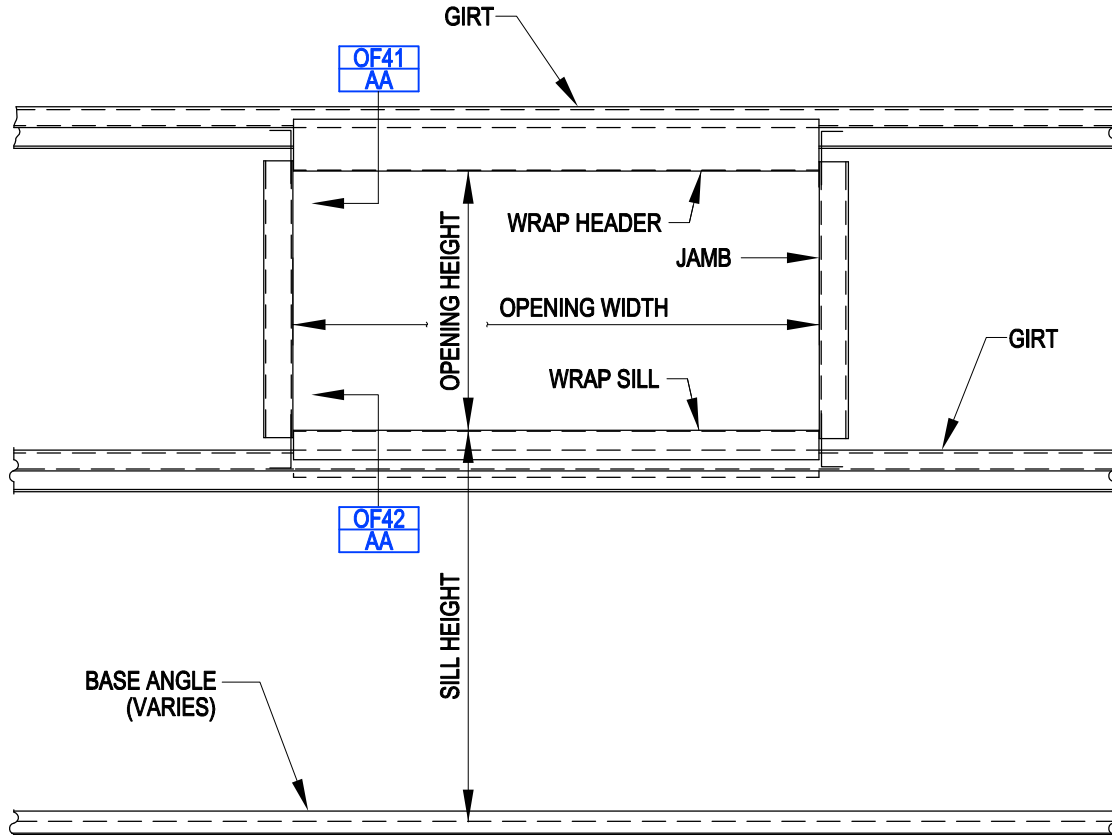
Framed Opening Key With Wrap Header  
 Jamb to Girt Condition  
 OFOAA/AA



[Download the DWG file by clicking here.](#)

[To Section Index](#)

Framed Opening Key With Wrap Header & Sill  
Jamb to Girt Condition  
OFOAB/AA



**FRAMED OPENING KEY WITH WRAP HEADER & SILL**

JAMB TO GIRT CONDITION

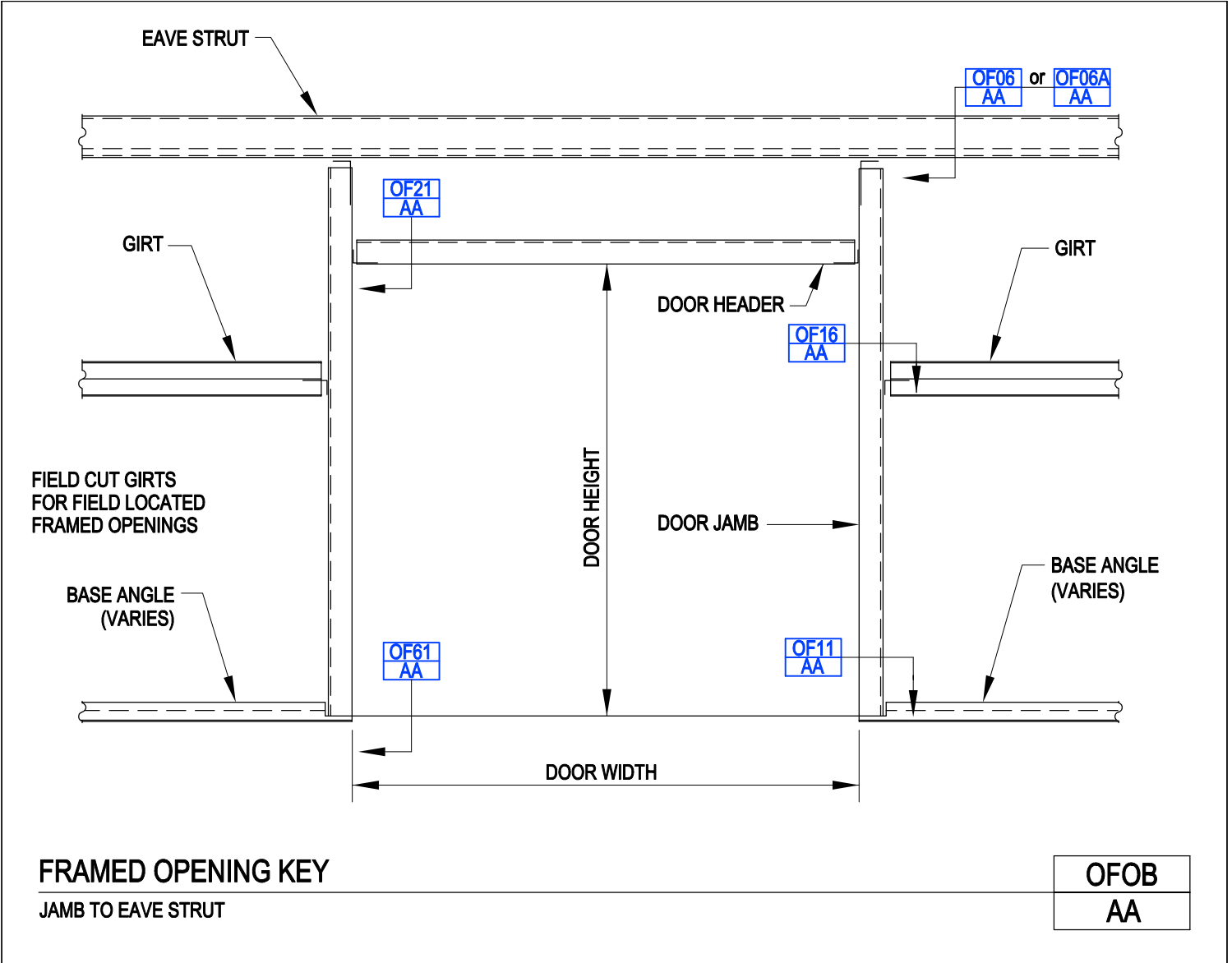
**OFOAB**

**AA**

[Download the DWG file by clicking here.](#)

[To Section Index](#)

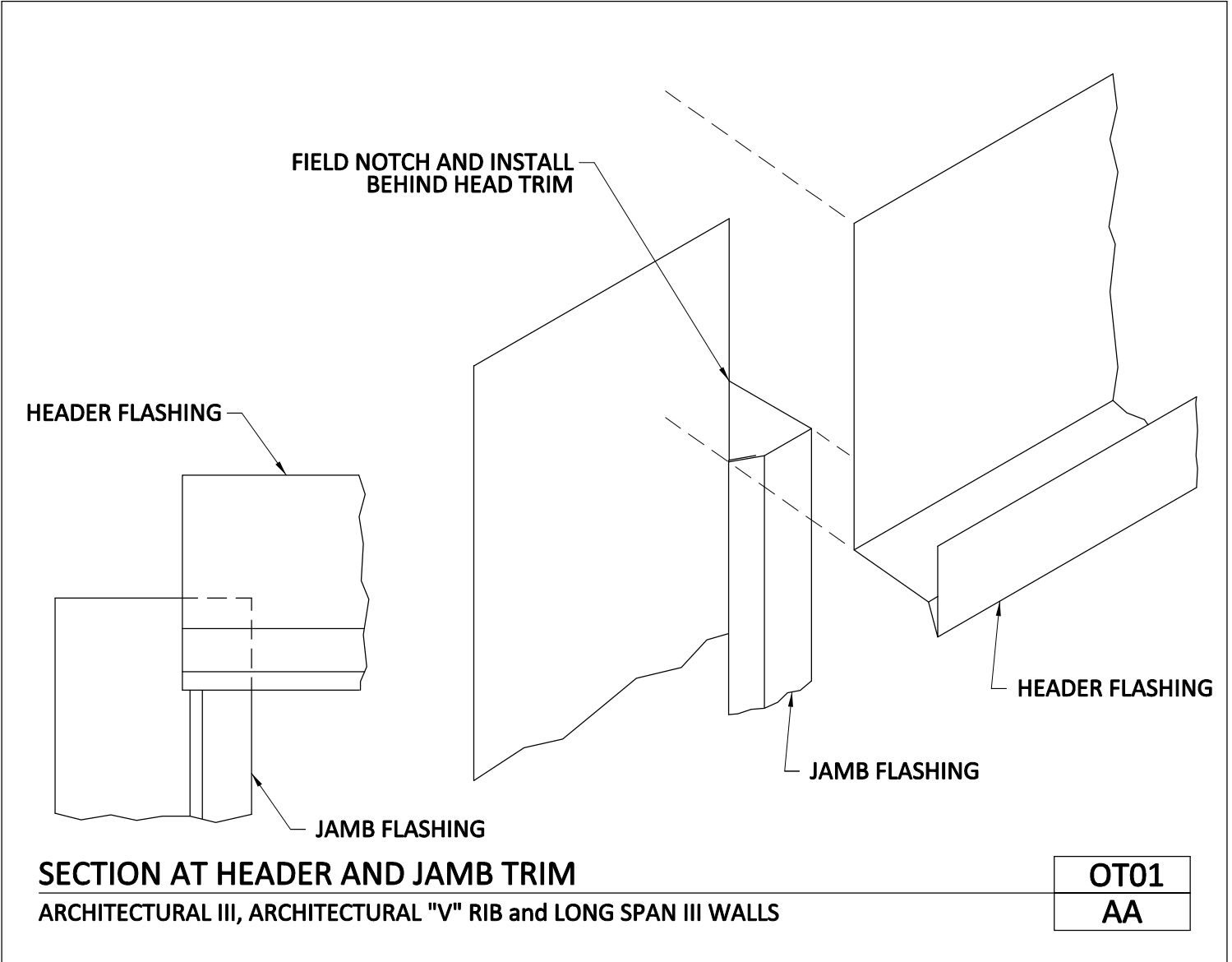
Framed Opening Key  
Jamb to Eave Strut  
OFOB/AA



[Download the DWG file by clicking here.](#)

[To Section Index](#)

Section at Header and Jamb Trim  
 Architectural III, Architectural "V" Rib, and Long Span III Walls  
 OT01/AA

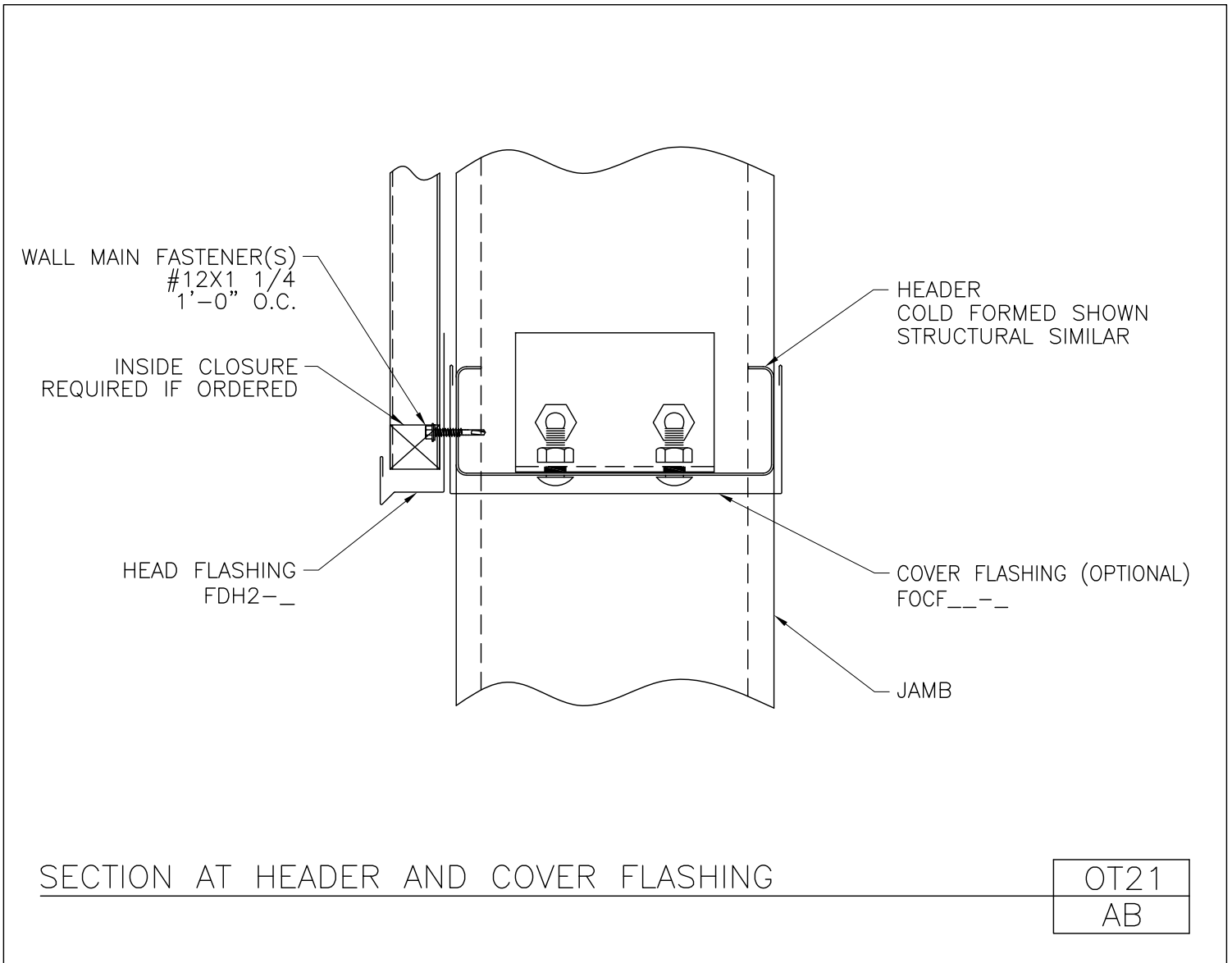


[Download the DWG file by clicking here.](#)

[To Section Index](#)

Section at Header and Cover Flashing

OT21/AB

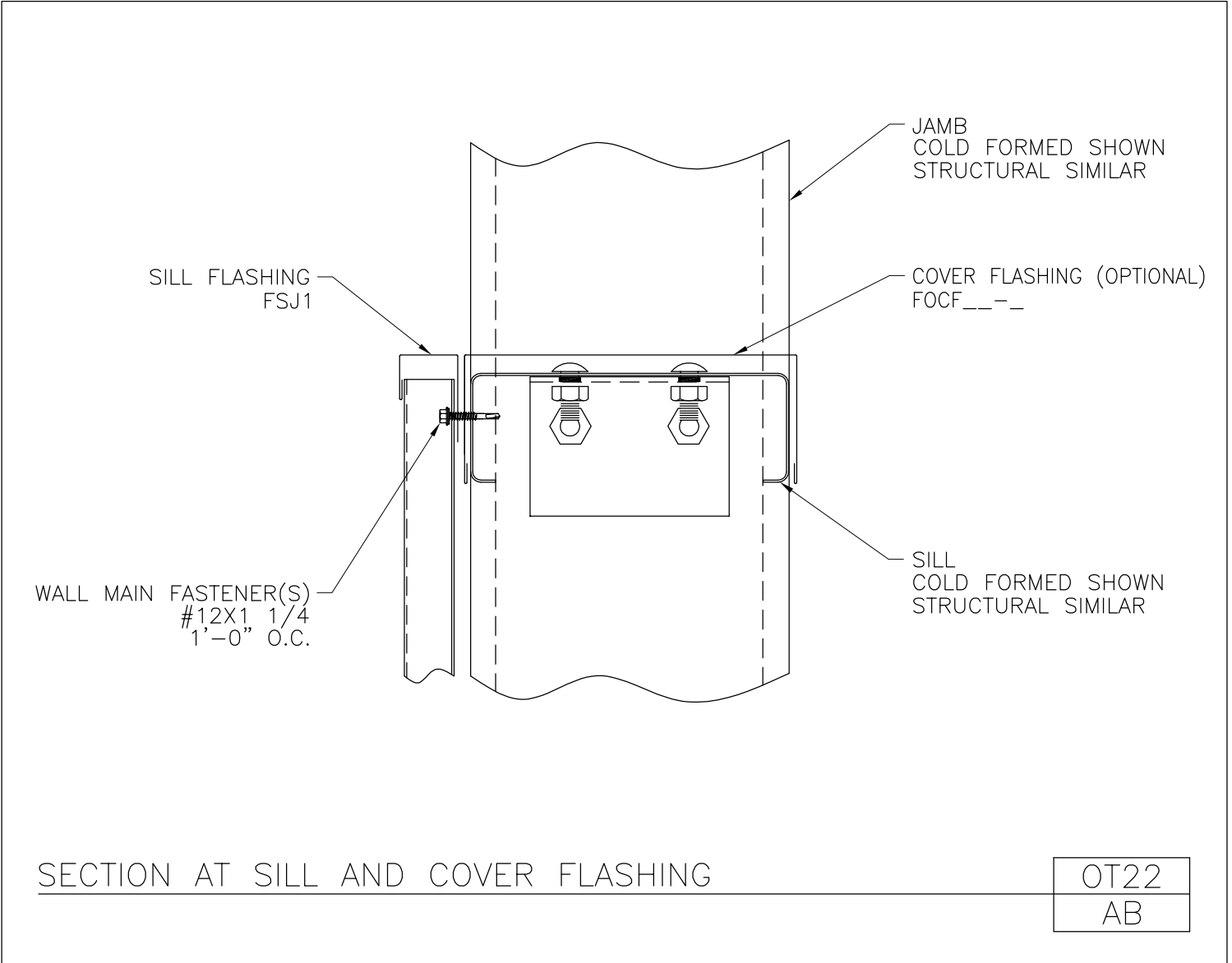


[Download the DWG file by clicking here.](#)

[To Section Index](#)

Section at Sill and Cover Flashing

OT22/AB

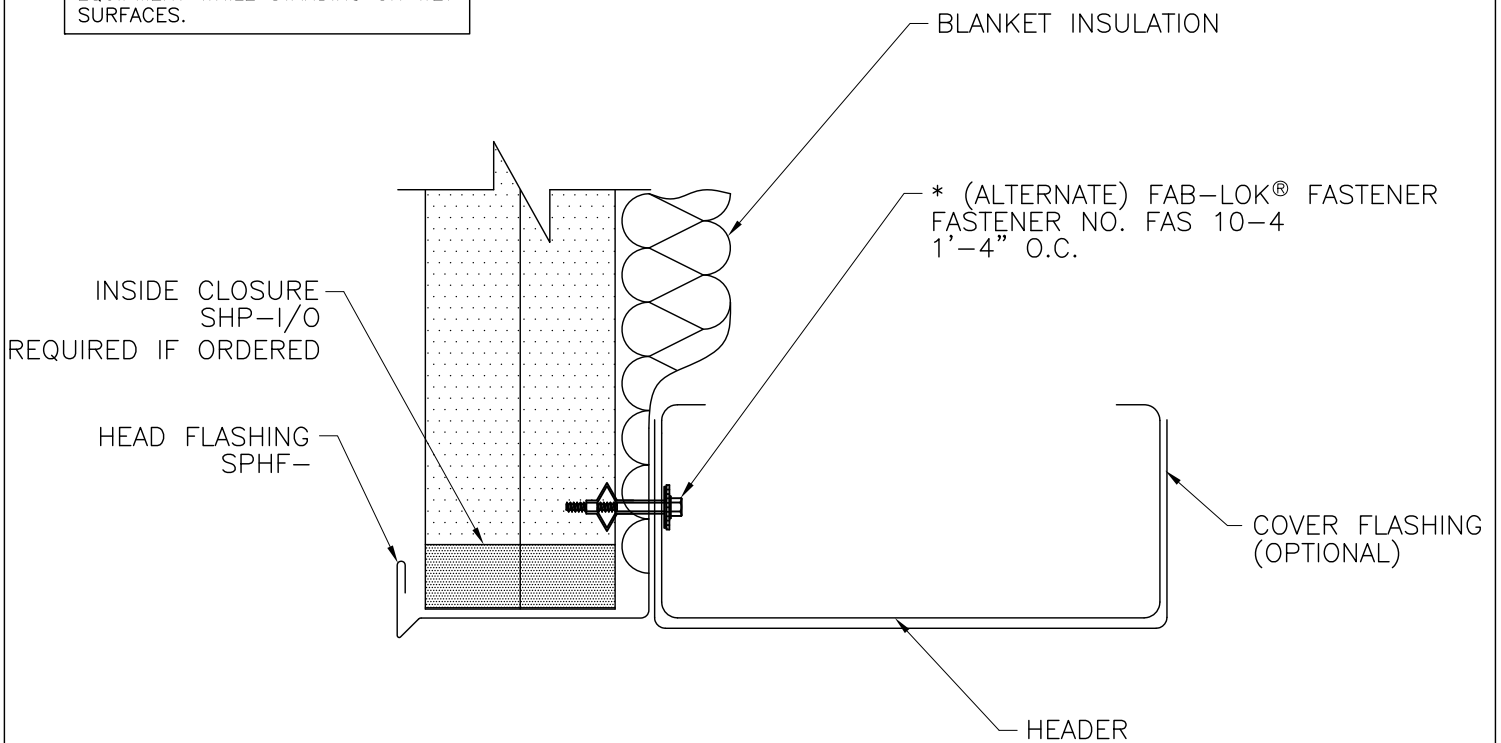


[Download the DWG file by clicking here.](#)

[To Section Index](#)

Detail at Head for Field Located Framed Opening  
Shadow Panel Walls w/ Alternate Fab-Lok Fastener  
OT23A/AD

SAFETY PRECAUTION:  
ELECTRICAL TOOLS MUST BE PROPERLY  
GROUNDED. DO NOT USE ELECTRICAL  
EQUIPMENT WHILE STANDING ON WET  
SURFACES.



\* REQUIRES FIELD DRILLED 5/16"Ø HOLE

DETAIL AT HEAD FOR FIELD LOCATED FRAMED OPENING  
SHADOW PANEL WALLS WITH ALTERNATE FAB-LOK® FASTENER

|       |
|-------|
| OT23A |
| AD    |

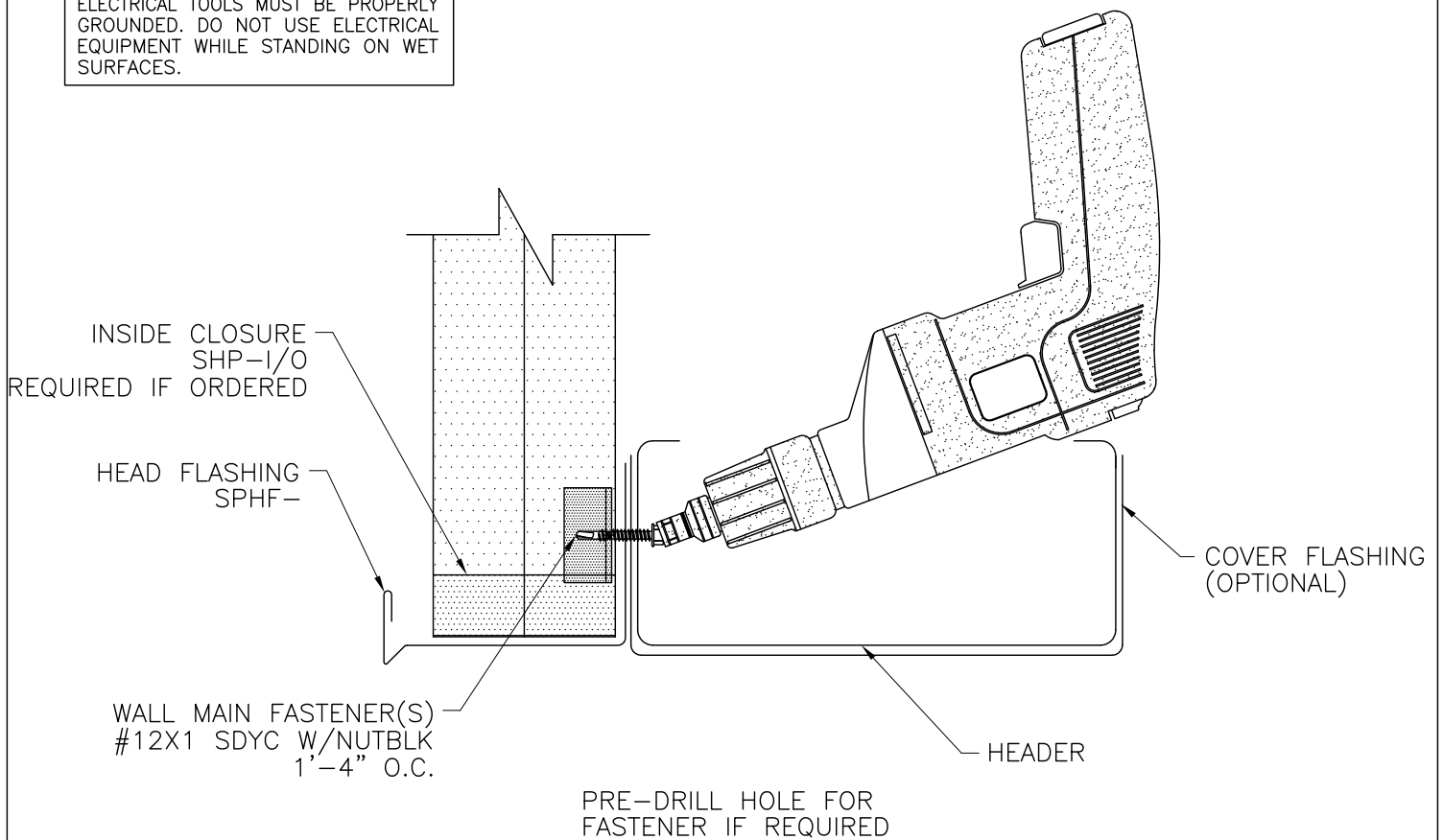
[Download the DWG file by clicking here.](#)

[To Section Index](#)



Detail at Head for Field Located Framed Opening  
Shadow Panel Walls  
OT23/AD

SAFETY PRECAUTION:  
ELECTRICAL TOOLS MUST BE PROPERLY  
GROUNDED. DO NOT USE ELECTRICAL  
EQUIPMENT WHILE STANDING ON WET  
SURFACES.



DETAIL AT HEAD FOR FIELD LOCATED FRAMED OPENING  
SHADOW PANEL WALLS

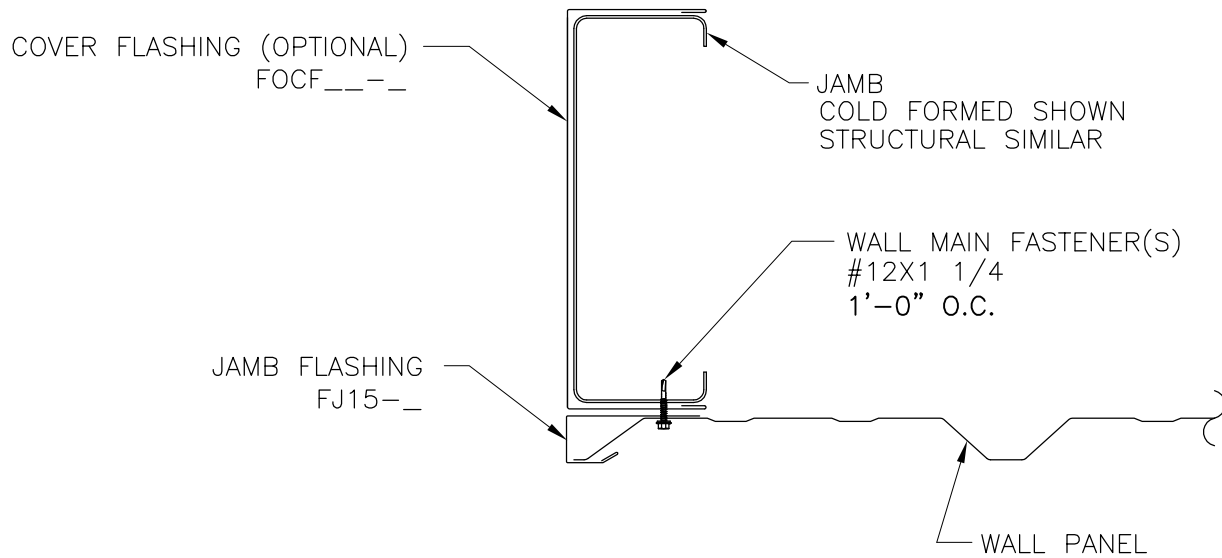
|      |
|------|
| OT23 |
| AD   |

[Download the DWG file by clicking here.](#)

[To Section Index](#)

Section at Framed Opening Jamb  
Long Span III Walls  
OT26/AB

SAFETY PRECAUTION:  
WORKERS SHOULD ALWAYS WEAR  
GLOVES WHEN HANDLING METAL  
SURFACES WITH SHARP EDGES.



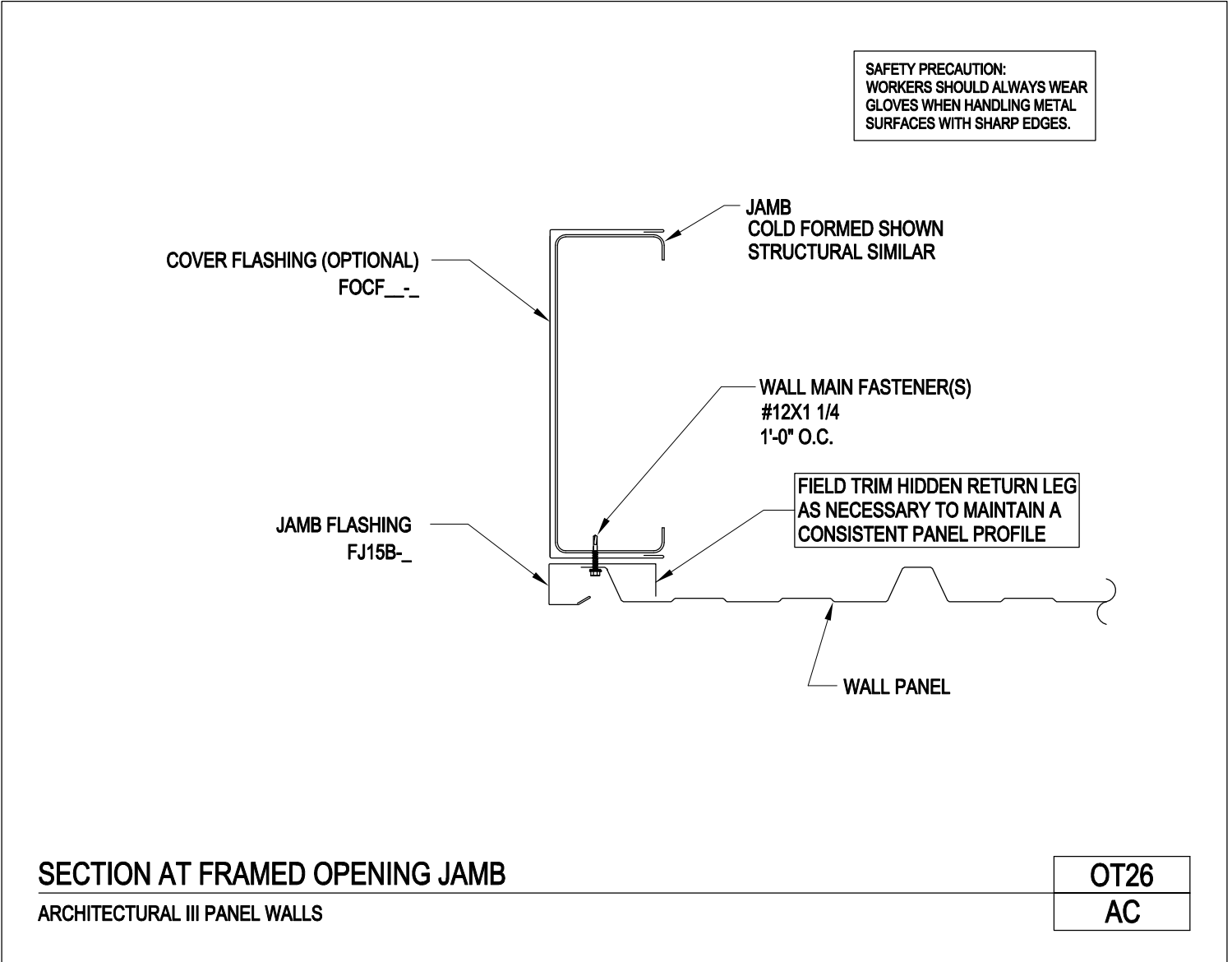
SECTION AT FRAMED OPENING JAMB  
LONG SPAN III WALLS

|      |
|------|
| OT26 |
| AB   |

[Download the DWG file by clicking here.](#)

[To Section Index](#)

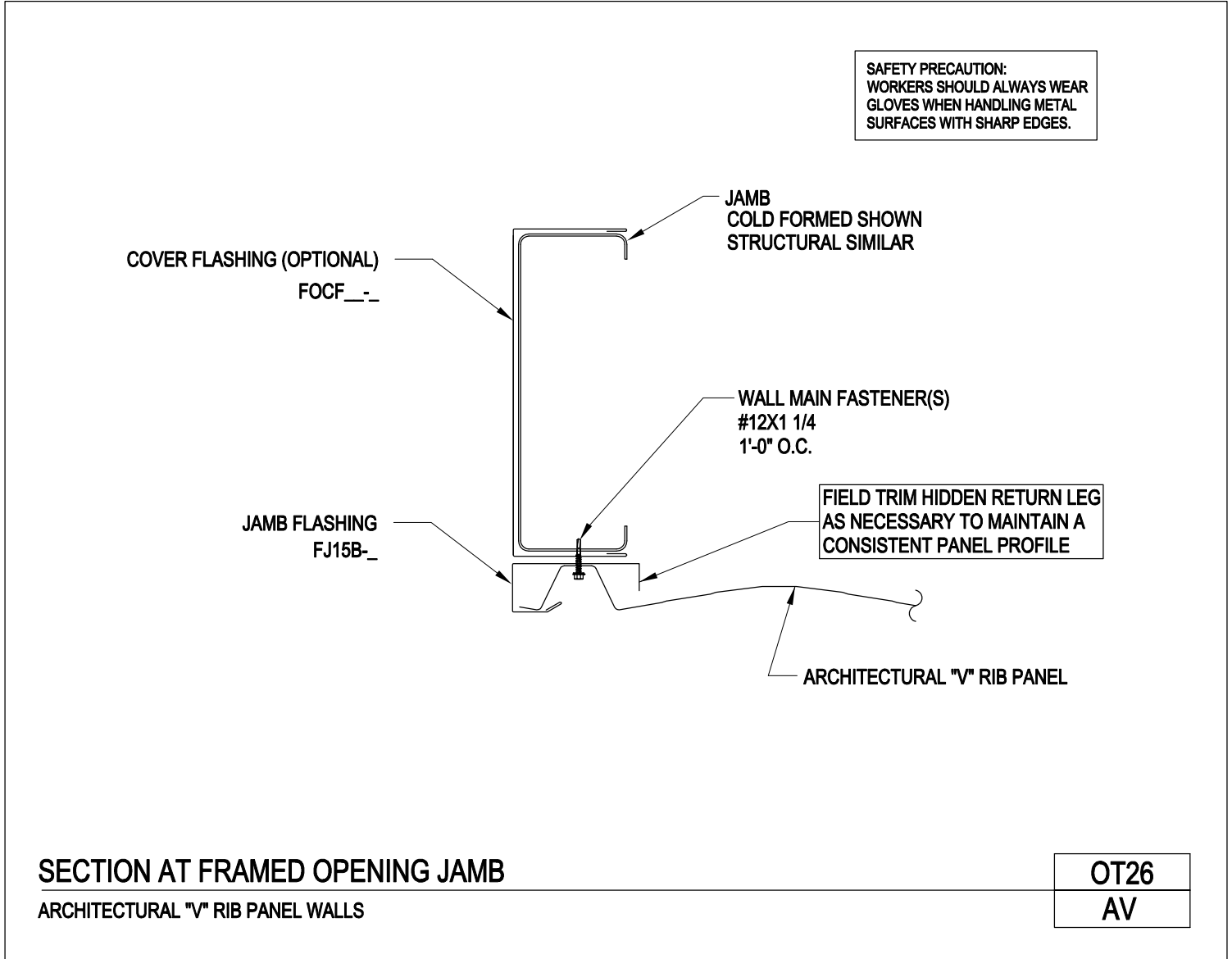
Section at Framed Opening Jamb  
Architectural III Wall Panels  
OT26/AC



[Download the DWG file by clicking here.](#)

[To Section Index](#)

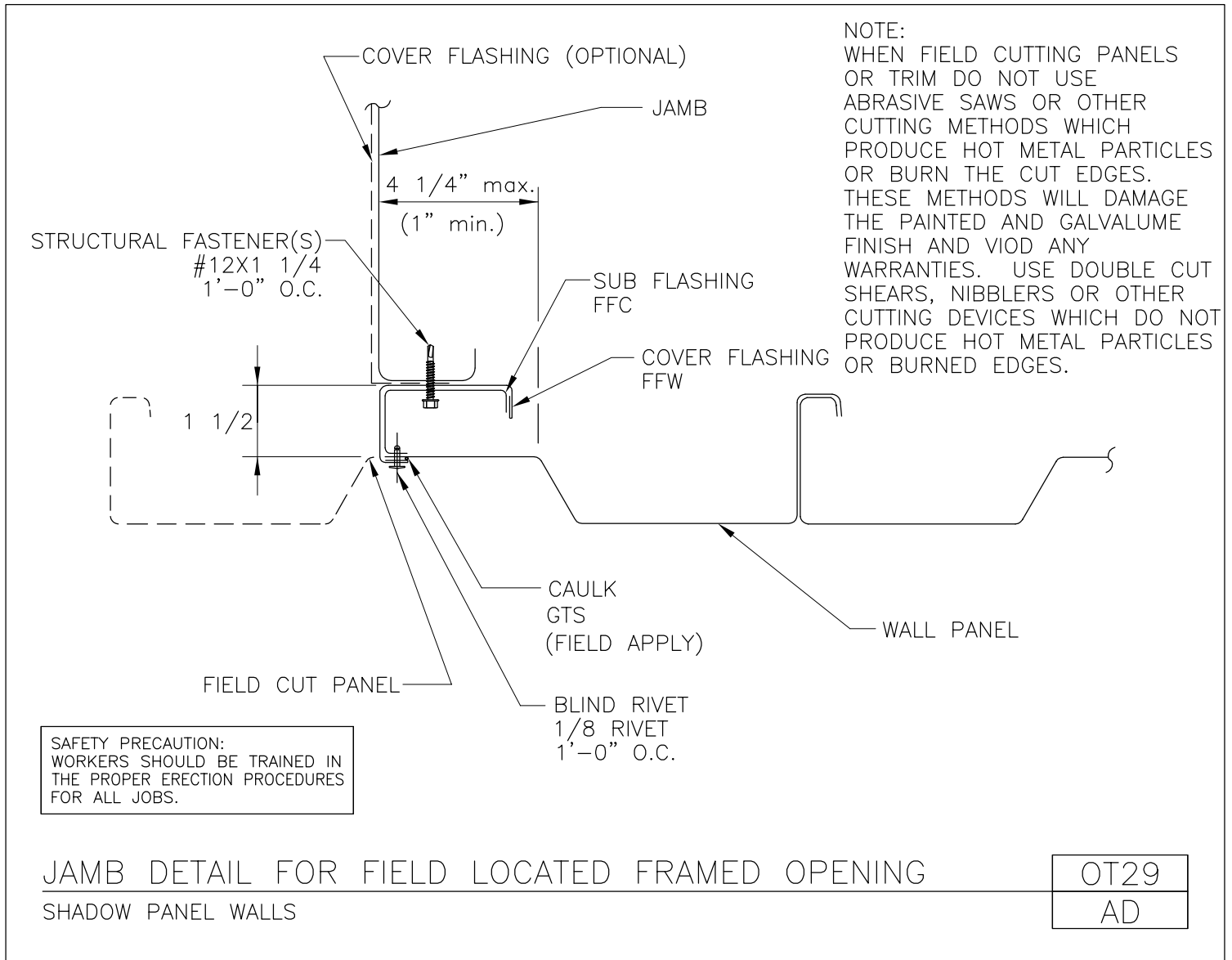
Section at Framed Opening Jamb  
Architectural "V" Rib Panel Walls  
OT26/AV



[Download the DWG file by clicking here.](#)

[To Section Index](#)

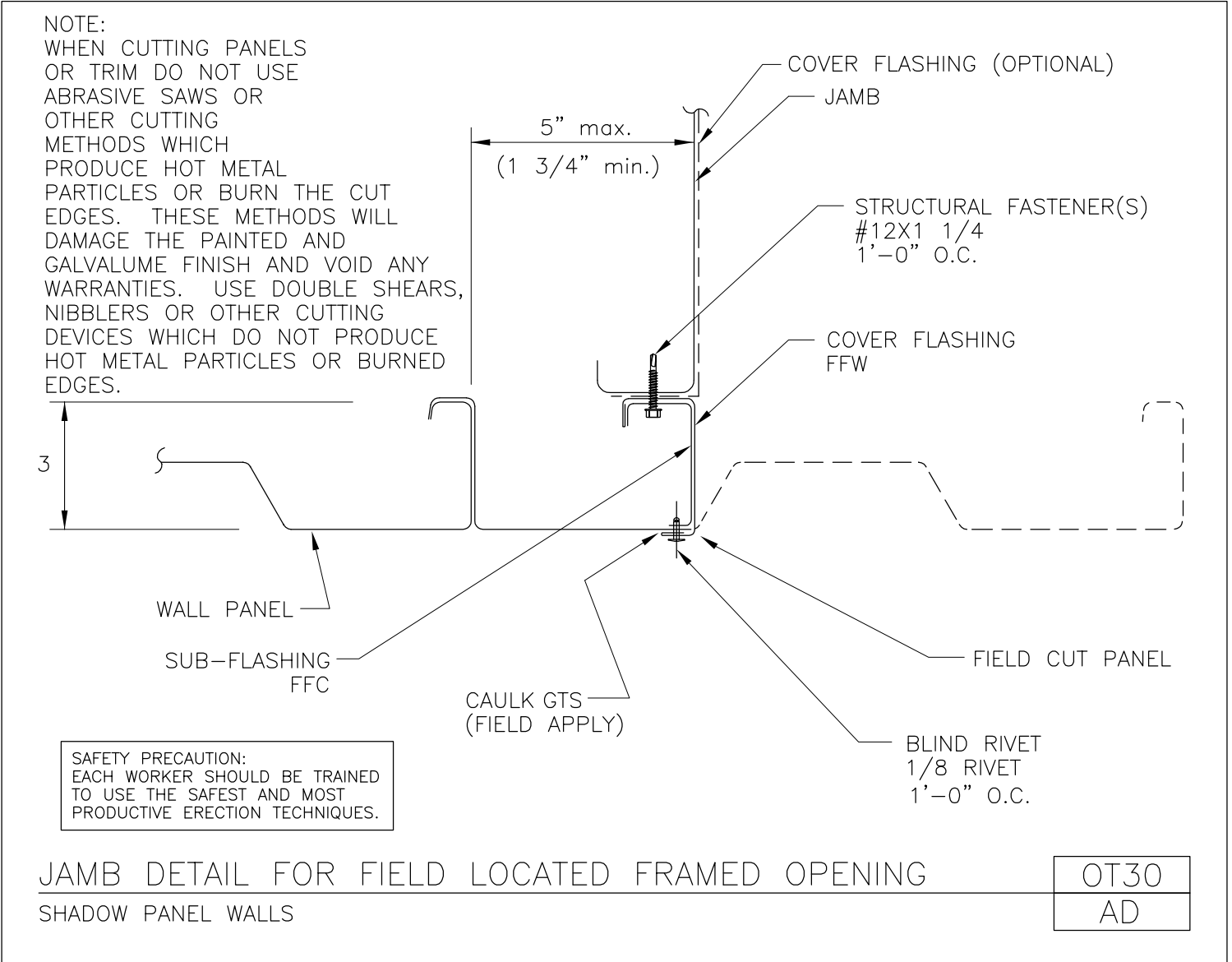
Jamb Detail for Field Located Framed Opening  
Shadow Panel Walls  
OT29/AD



[Download the DWG file by clicking here.](#)

[To Section Index](#)

Jamb Detail for Field Located Framed Opening  
Shadow Panel Walls  
OT30/AD



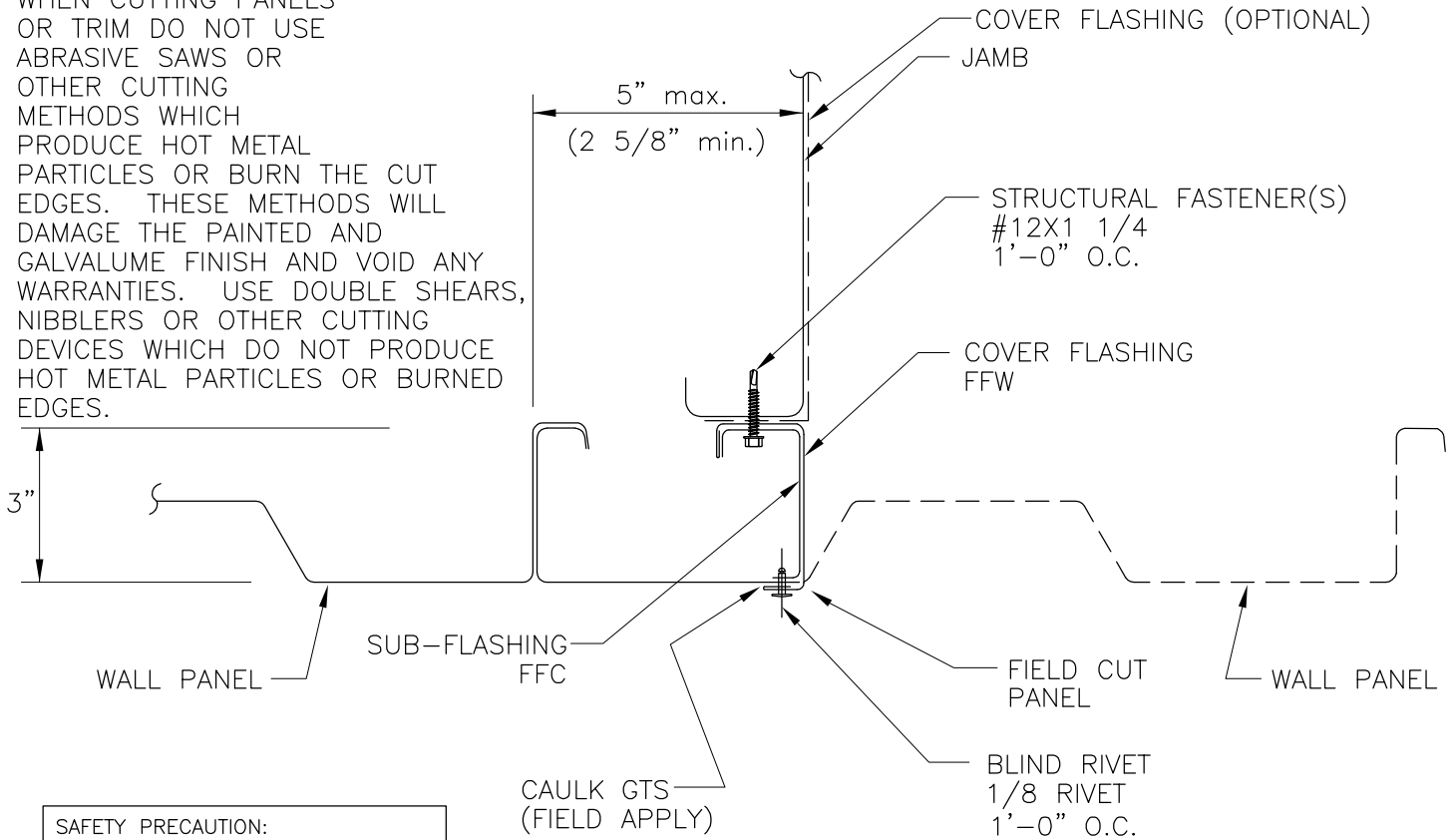
[Download the DWG file by clicking here.](#)

[To Section Index](#)

Jamb Detail for Field Located Framed Opening  
Shadow Panel Walls  
OT32/AD

NOTE:

WHEN CUTTING PANELS OR TRIM DO NOT USE ABRASIVE SAWS OR OTHER CUTTING METHODS WHICH PRODUCE HOT METAL PARTICLES OR BURN THE CUT EDGES. THESE METHODS WILL DAMAGE THE PAINTED AND GALVALUME FINISH AND VOID ANY WARRANTIES. USE DOUBLE SHEARS, NIBBLERS OR OTHER CUTTING DEVICES WHICH DO NOT PRODUCE HOT METAL PARTICLES OR BURNED EDGES.



SAFETY PRECAUTION:  
EACH WORKER SHOULD BE TRAINED  
TO USE THE SAFEST AND MOST  
PRODUCTIVE ERECTION TECHNIQUES.

JAMB DETAIL FOR FIELD LOCATED FRAMED OPENING  
SHADOW PANEL WALLS

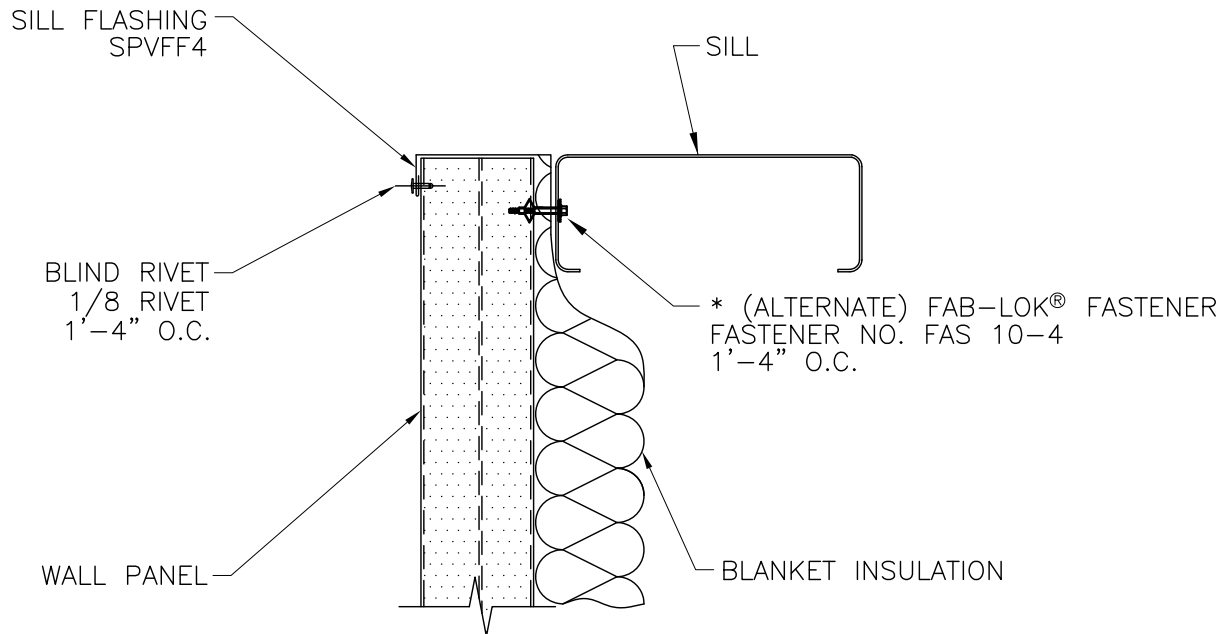
|      |
|------|
| OT32 |
| AD   |

[Download the DWG file by clicking here.](#)

[To Section Index](#)

Detail at Sill for Field Located Framed Opening  
Shadow Panel Walls w/ Alternate Fab-Lok Fastener  
OT36A/AD

SAFETY PRECAUTION:  
ALWAYS WEAR OSHA APPROVED EYE  
PROTECTION WHEN OPERATING DRILLS  
OR ELECTRIC SCREW GUNS.



\* REQUIRES FIELD DRILLED 5/16"Ø HOLE

DETAIL AT SILL FOR FIELD LOCATED FRAMED OPENING  
SHADOW PANEL WALLS WITH ALTERNATE FAB-LOK® FASTENER

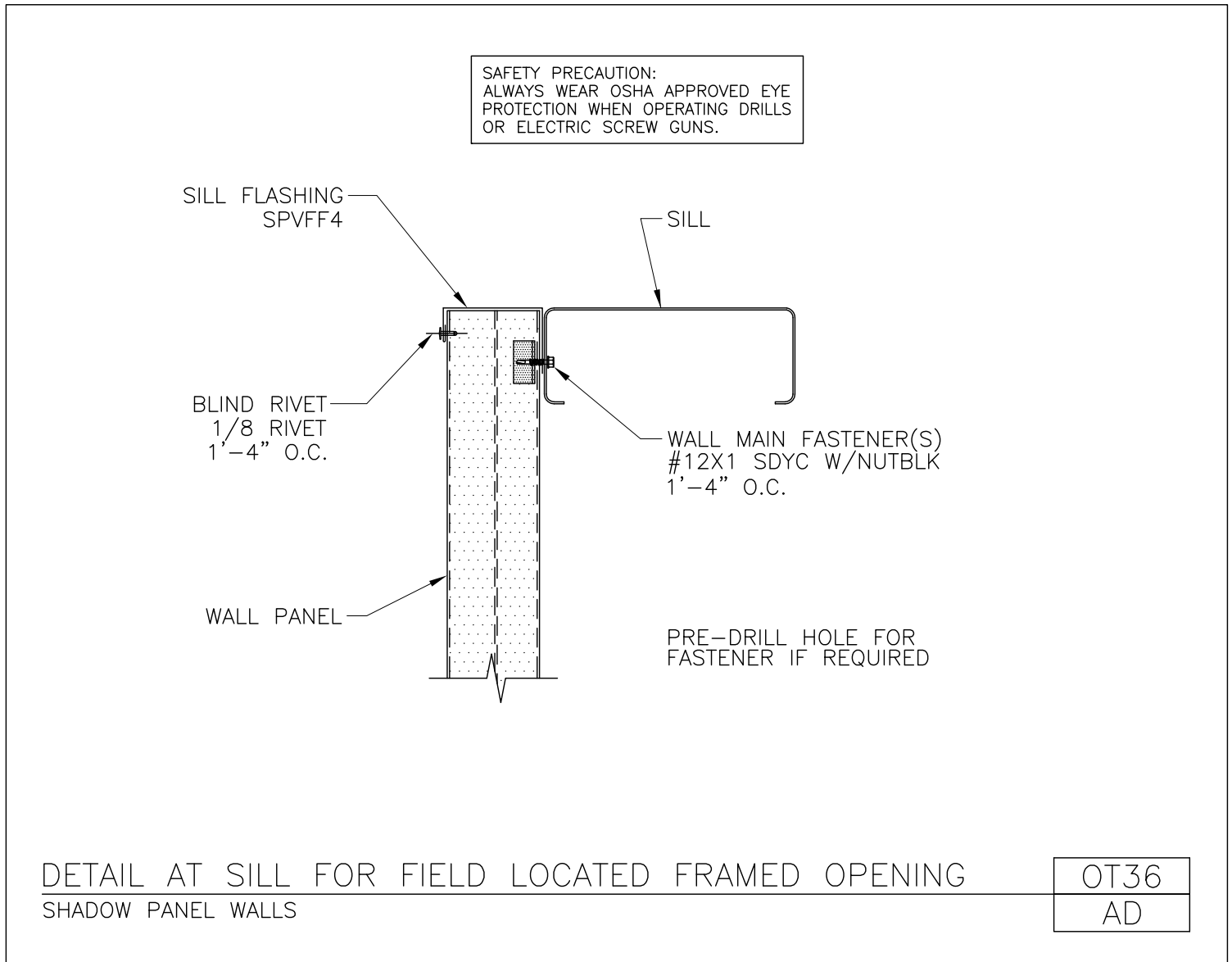
|       |
|-------|
| OT36A |
| AD    |

[Download the DWG file by clicking here.](#)

[To Section Index](#)



Detail at Sill for Field Located Framed Opening  
Shadow Panel Walls  
OT36/AD

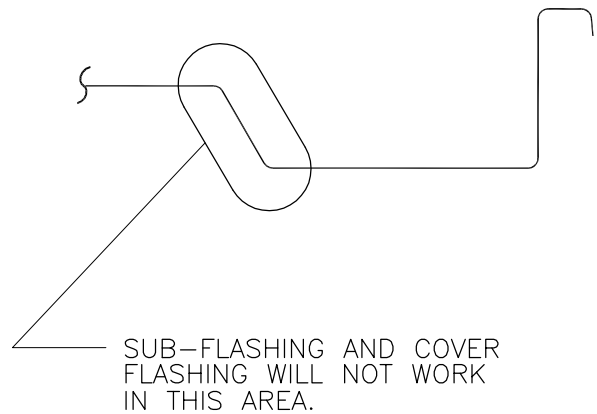
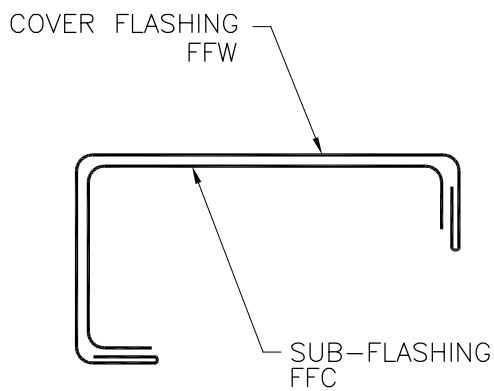


[Download the DWG file by clicking here.](#)

[To Section Index](#)

Sub-Flashing Assembly  
Shadow Panel Walls  
OT38/AD

SUB-FLASHINGS MUST BE ASSEMBLED  
BEFORE INSTALLATION.



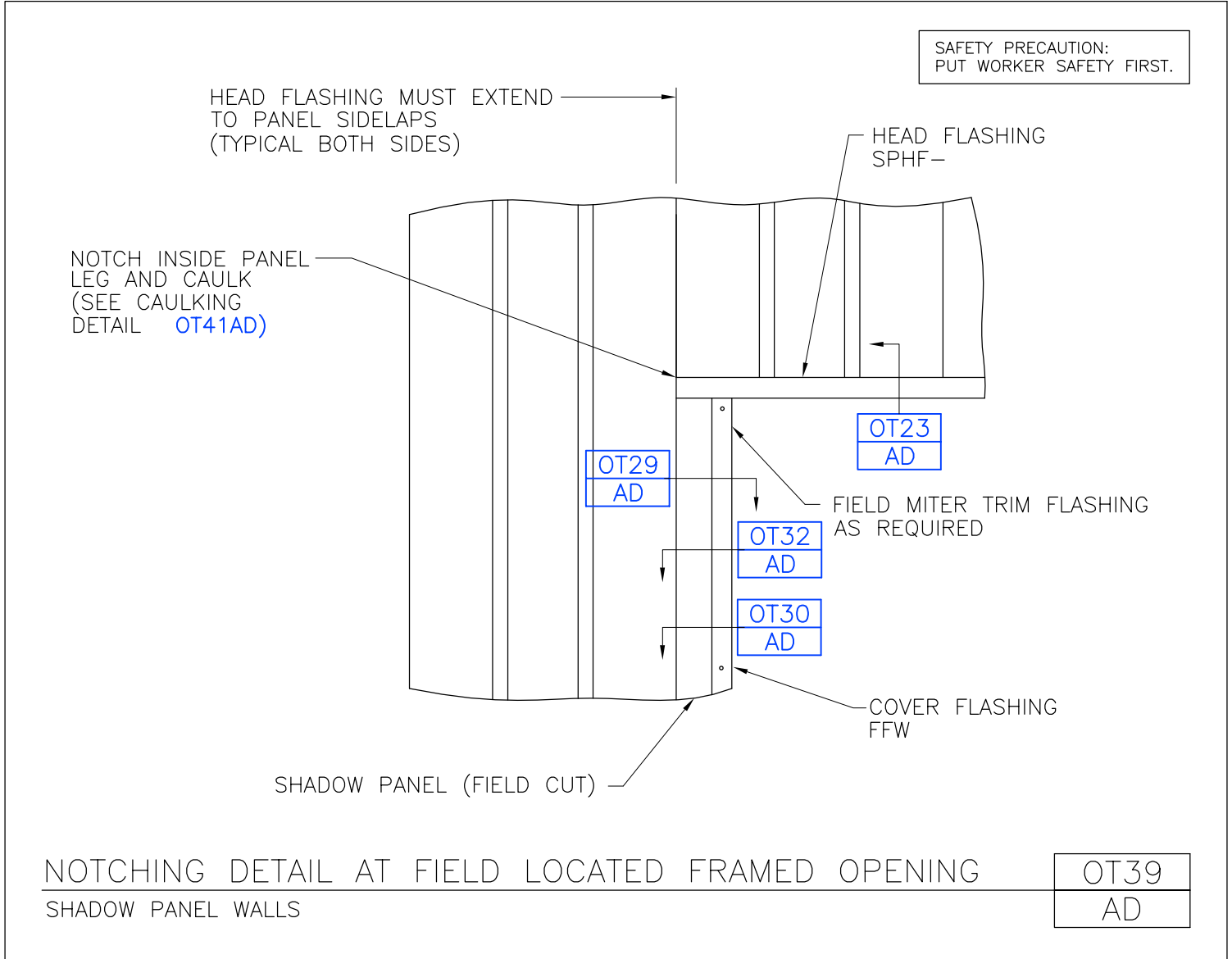
SUB-FLASHING ASSEMBLY  
SHADOW PANEL WALLS

|      |
|------|
| OT38 |
| AD   |

[Download the DWG file by clicking here.](#)

[To Section Index](#)

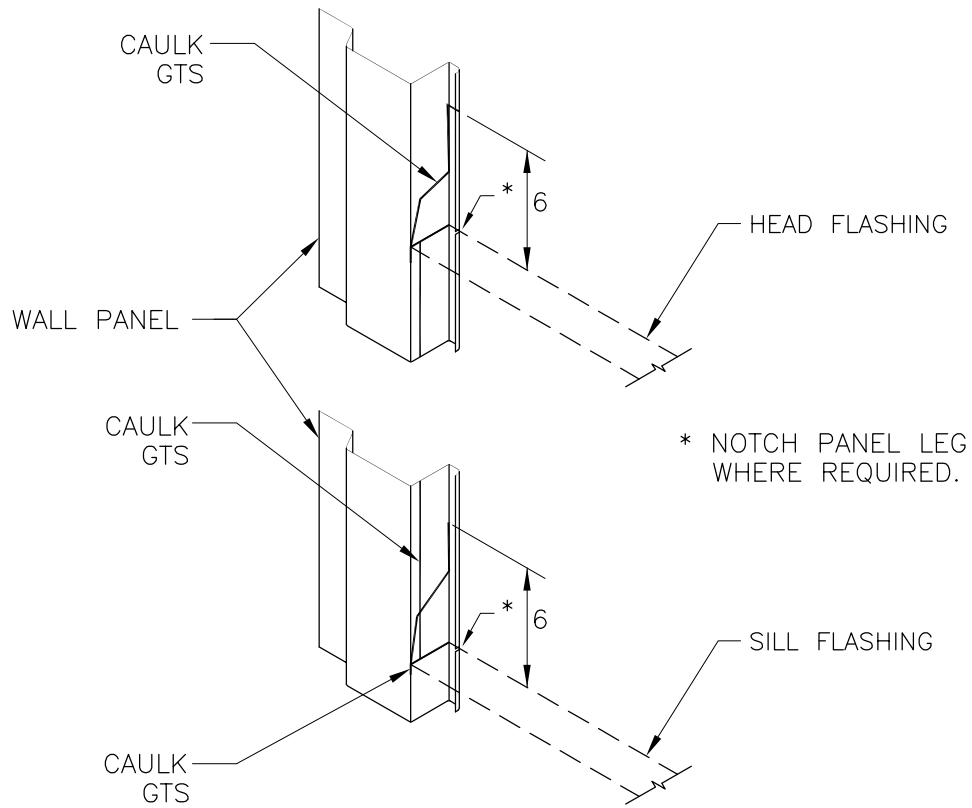
Notching Detail at Field Located Framed Opening  
Shadow Panel Walls  
OT39/AD



[Download the DWG file by clicking here.](#)

[To Section Index](#)

Caulking Detail at Framed Opening  
Shadow Panel Walls  
OT41/AD



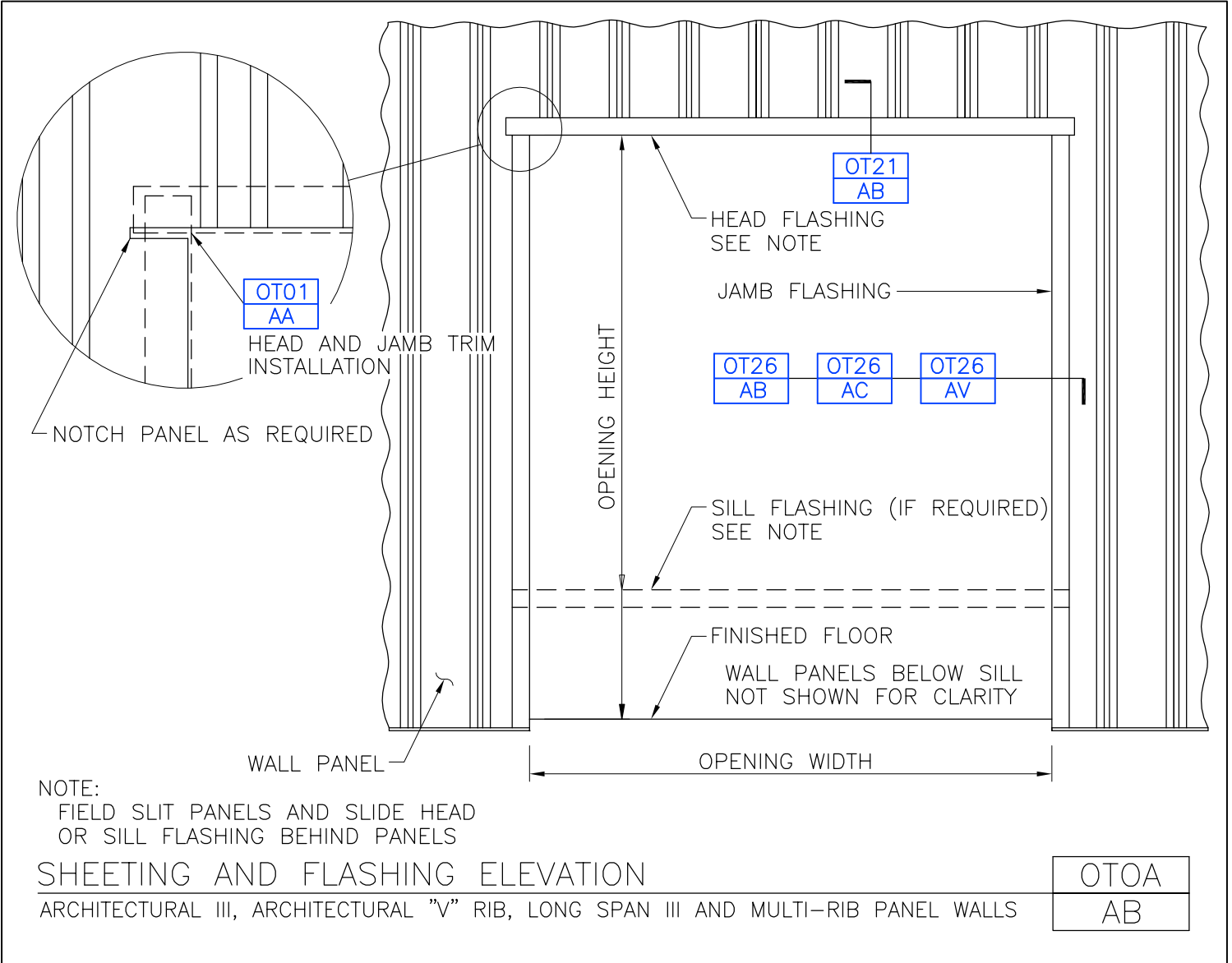
CAULKING DETAIL AT FRAMED OPENING  
SHADOW PANEL WALLS

|      |
|------|
| OT41 |
| AD   |

[Download the DWG file by clicking here.](#)

[To Section Index](#)

Sheeting and Flashing Elevation  
Architectural III, Architectural "V" Rib, Long Span III and Multi-Rib Panel Walls  
OTOA/AB



[Download the DWG file by clicking here.](#)

[To Section Index](#)