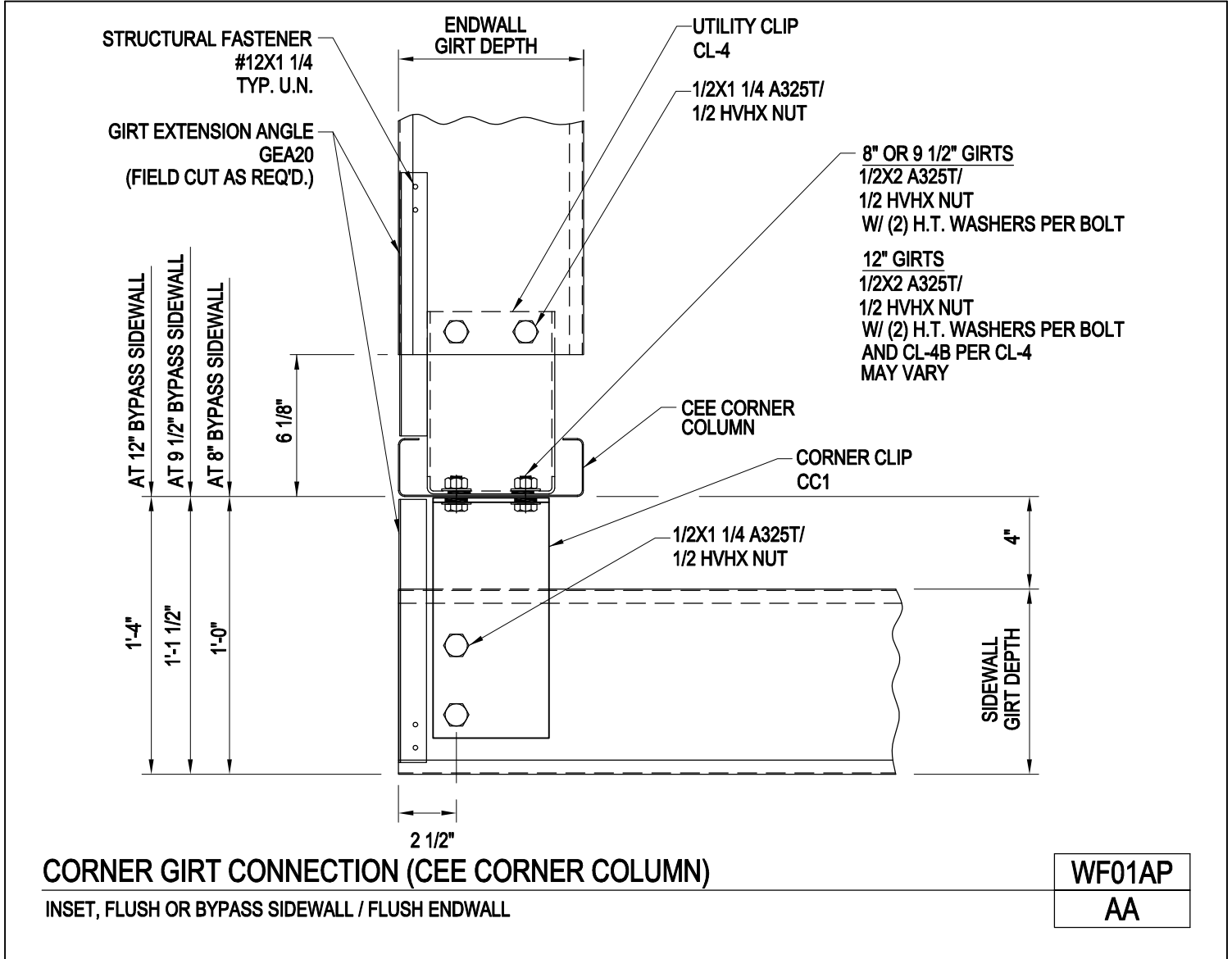


Index

WF01AP/AA, Corner Girt Connection (Cee Corner Column), Inset, Flush or Bypass Sidewall/Flush Endwall)
WF03P/AA, Interior Girt Connection (Cold Formed), Flush Endwall
WF14/AA, Girt Connection at Beam/Column Endwall Rotated Corner Column, Bypass, Inset or Flush Sidewall/Bypass Endwall Girt
WF14A/AA, Girt Connection at Beam/Column Endwall Rotated Corner Column, Open Sidewall/Bypass Endwall Girts
WF15/AA, Girt Connection at Beam/Column EW Rotated Corner Column, Bypass, Inset or Flush Sidewall/Inset or Flush EW Girts
WF15A/AA, Girt Connection at Beam/Column Endwall Rotated Corner Column, Open SW/Inset or Flush Endwall Girts
WF16/AA, Section Through Beam & Column EW Rotated Corner Column, Bypass, Inset or Flush SW Girts Bypass EW Girts
WF16A/AA, Section Through Beam/Column EW Rotated Corner Column, Open SW/Inset or Flush EW Girts
WF16W/AA, Section Through Beam/Column EW Rotated Corner Column, Bypass, Inset or Flush SW Girts/Inset or Flush EW Girts
WF71/AA, Lean-To EW Girt Connection at Main Bldg Corner, All SW Girt Conditions
WF81/AA, Girt Connection to Adjacent Bldg Sidewall or Endwall, At Lean-To or Building Addition

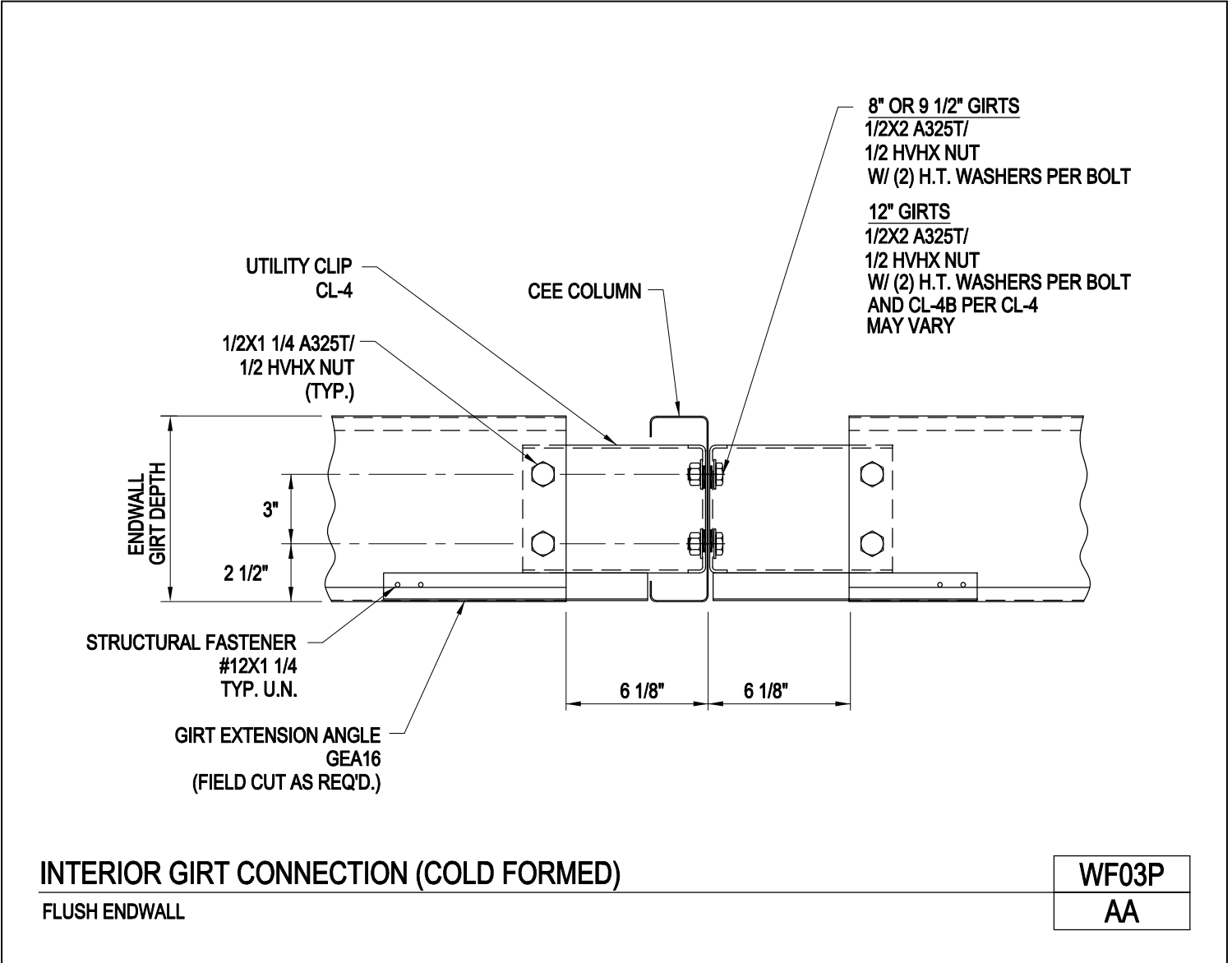
Corner Girt Connection (Cee Corner Column)
 Inset, Flush, or Bypass Sidewall / Flush Endwall
 WF01AP/AA



[Download the DWG file by clicking here.](#)

[To Section Index](#)

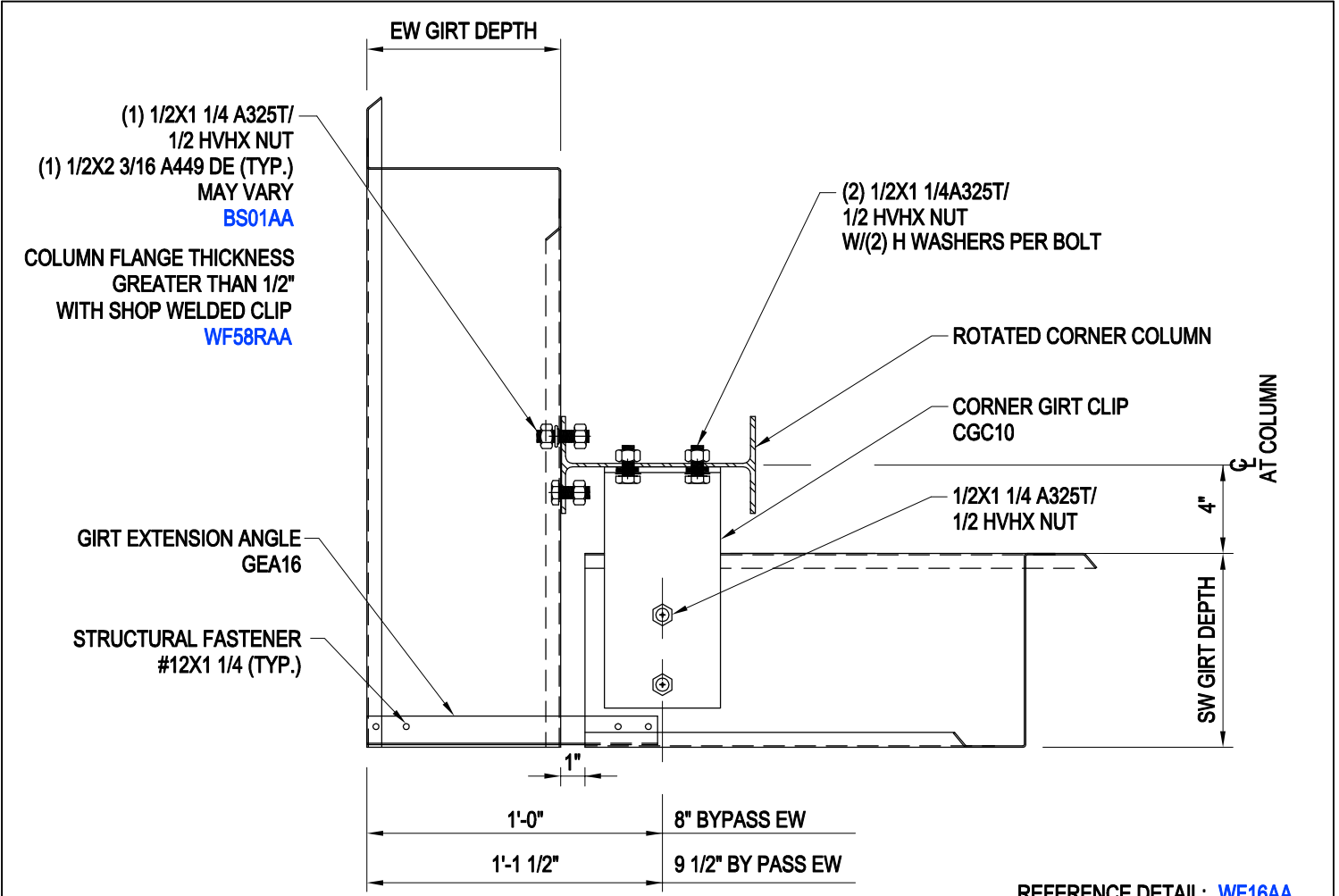
Interior Girt Connection (Cold Formed)
 Flush Endwall
 WF03P/AA



[Download the DWG file by clicking here.](#)

[To Section Index](#)

Girt Connection at Beam/Column Endwall Rotated Corner Column
 Bypass, Inset, or Flush Sidewall/Bypass Endwall Girts
 WF14/AA



GIRT CONNECTION AT BEAM / COLUMN ENDWALL ROTATED CORNER COLUMN

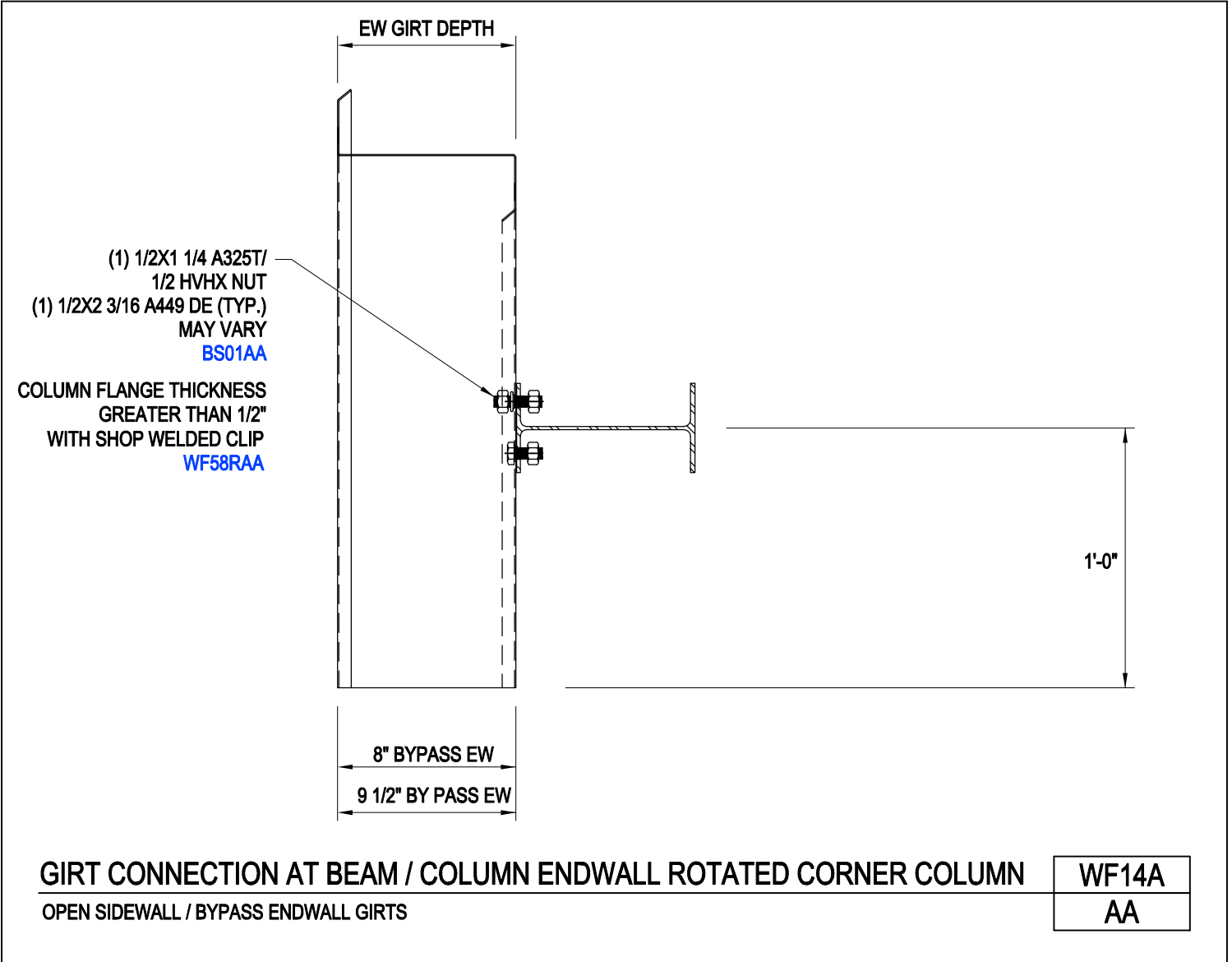
BYPASS, INSET OR FLUSH SIDEWALL / BYPASS ENDWALL GIRTS

WF14
AA

[Download the DWG file by clicking here.](#)

[To Section Index](#)

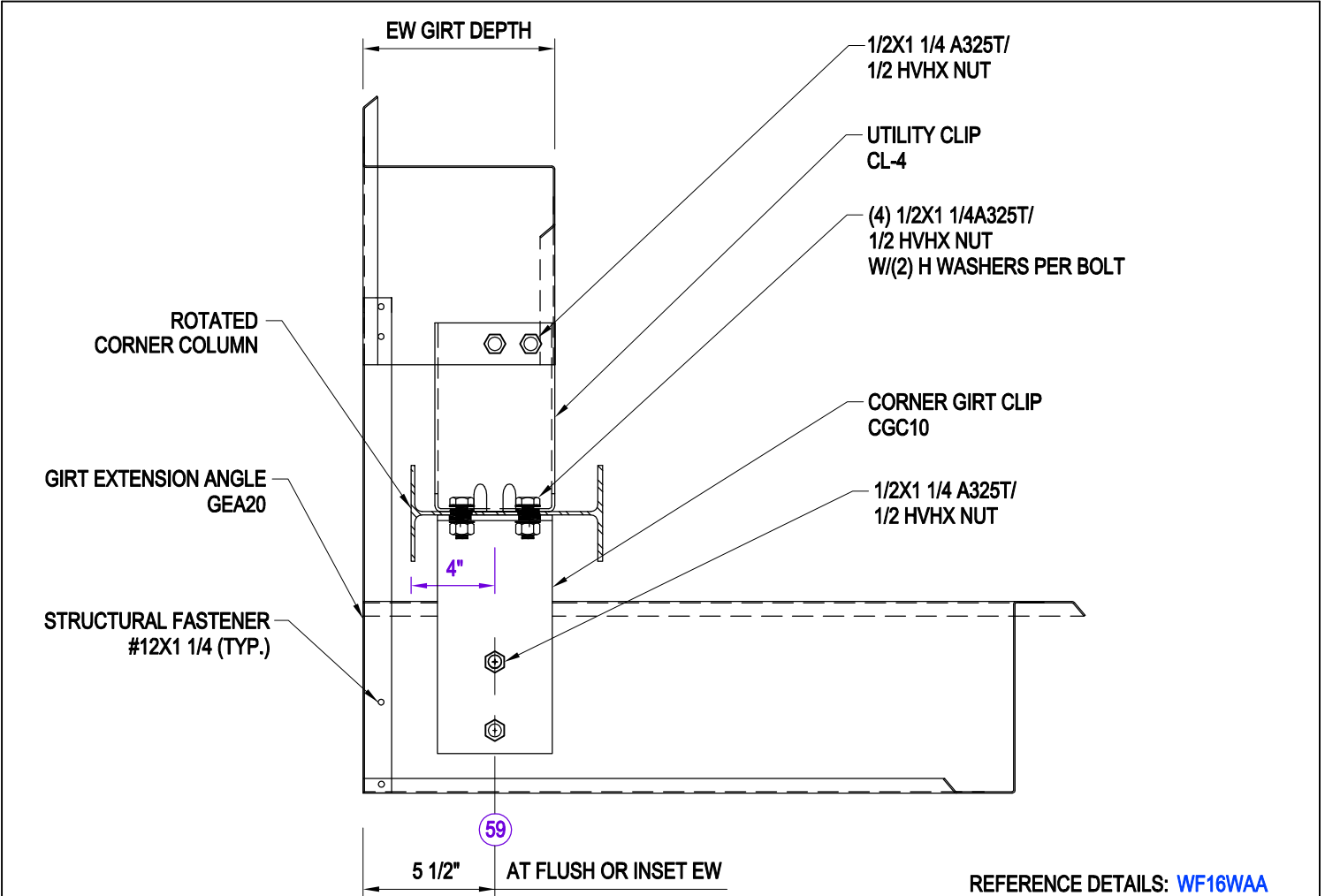
Girt Connection at Beam / Column Endwall Rotated Corner Column
 Open Sidewall/Bypass Endwall Girts
 WF14A/AA



[Download the DWG file by clicking here.](#)

[To Section Index](#)

Girt Connection at Beam/Column Endwall Rotated Corner Column
 Bypass, Inset, or Flush Sidewall/Inset or Flush Endwall Girts
 WF15/AA



REFERENCE DETAILS: [WF16WAA](#)

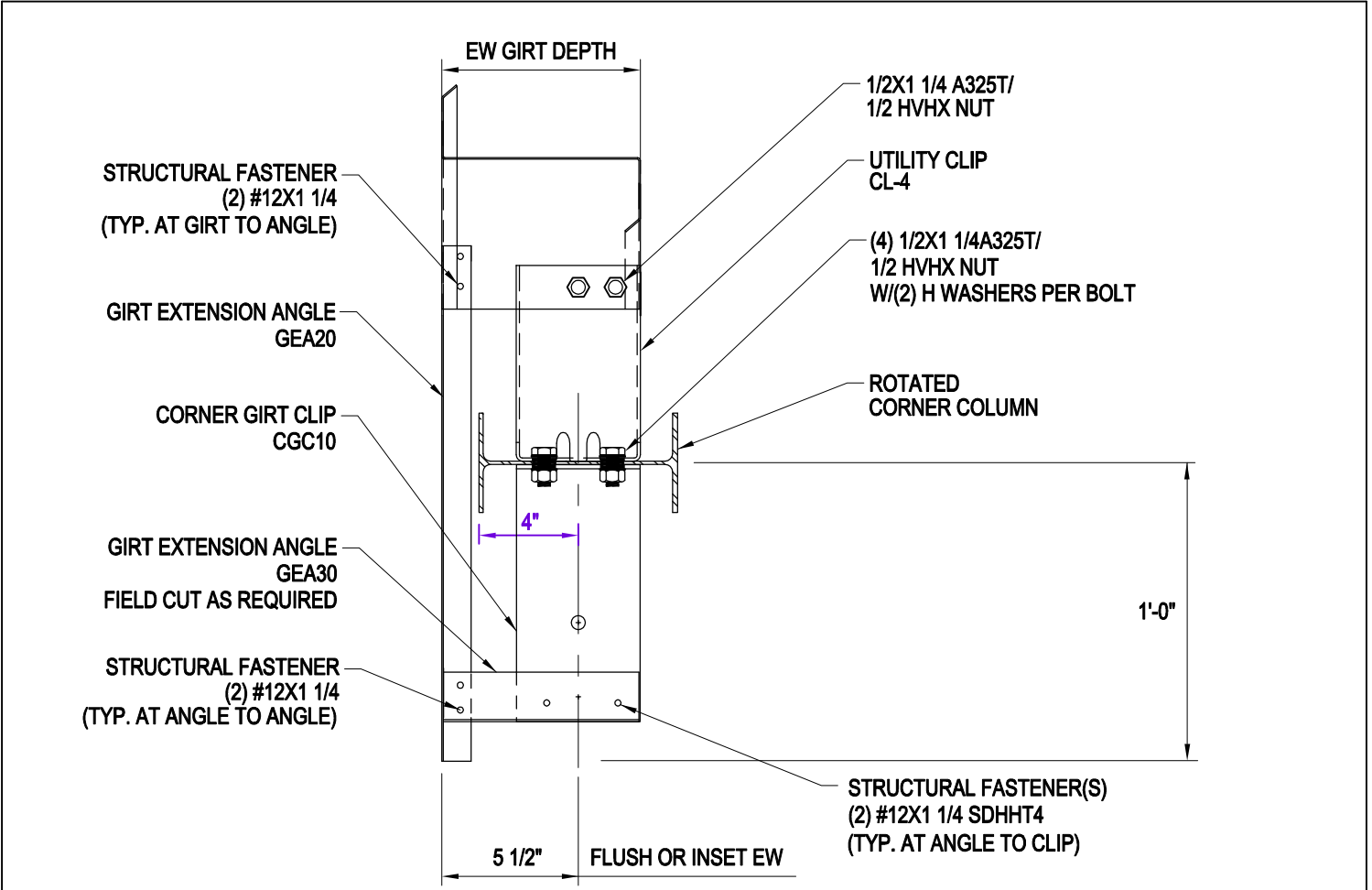
GIRT CONNECTION AT BEAM / COLUMN ENDWALL ROTATED CORNER COLUMN
 BYPASS, INSET OR FLUSH SIDEWALL / INSET OR FLUSH ENDWALL GIRTS

WF15
AA

[Download the DWG file by clicking here.](#)

[To Section Index](#)

Girt Connection at Beam/Column Endwall Rotated Corner Column
 Open Sidewall/Inset or Flush Endwall Girts
 WF15A/AA



REFERENCE DETAIL: [WF16WAA](#)

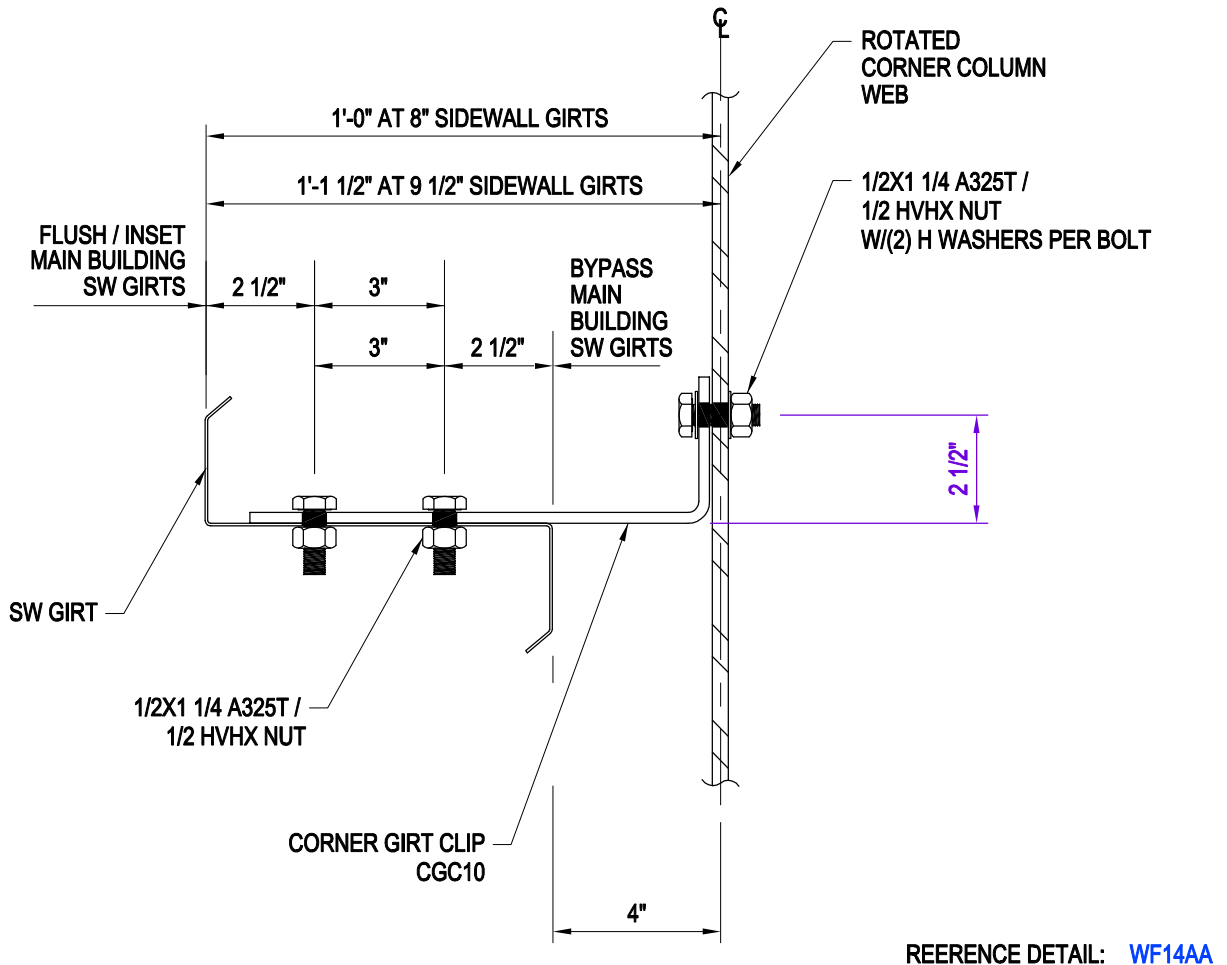
GIRT CONNECTION AT BEAM / COLUMN ENDWALL ROTATED CORNER COLUMN
 OPEN SIDEWALL / INSET OR FLUSH ENDWALL GIRTS

WF15A
AA

[Download the DWG file by clicking here.](#)

[To Section Index](#)

Section Through Beam & Column Endwall Rotated Corner Column
 Bypass, Inset or Flush Sidewall Girts/Bypass Endwall Girts
 WF16/AA



SECTION THROUGH BEAM & COLUMN ENDWALL ROTATED CORNER COLUMN

BYPASS, INSET OR FLUSH SIDEWALL GIRTS / BYPASS ENDWALL GIRTS

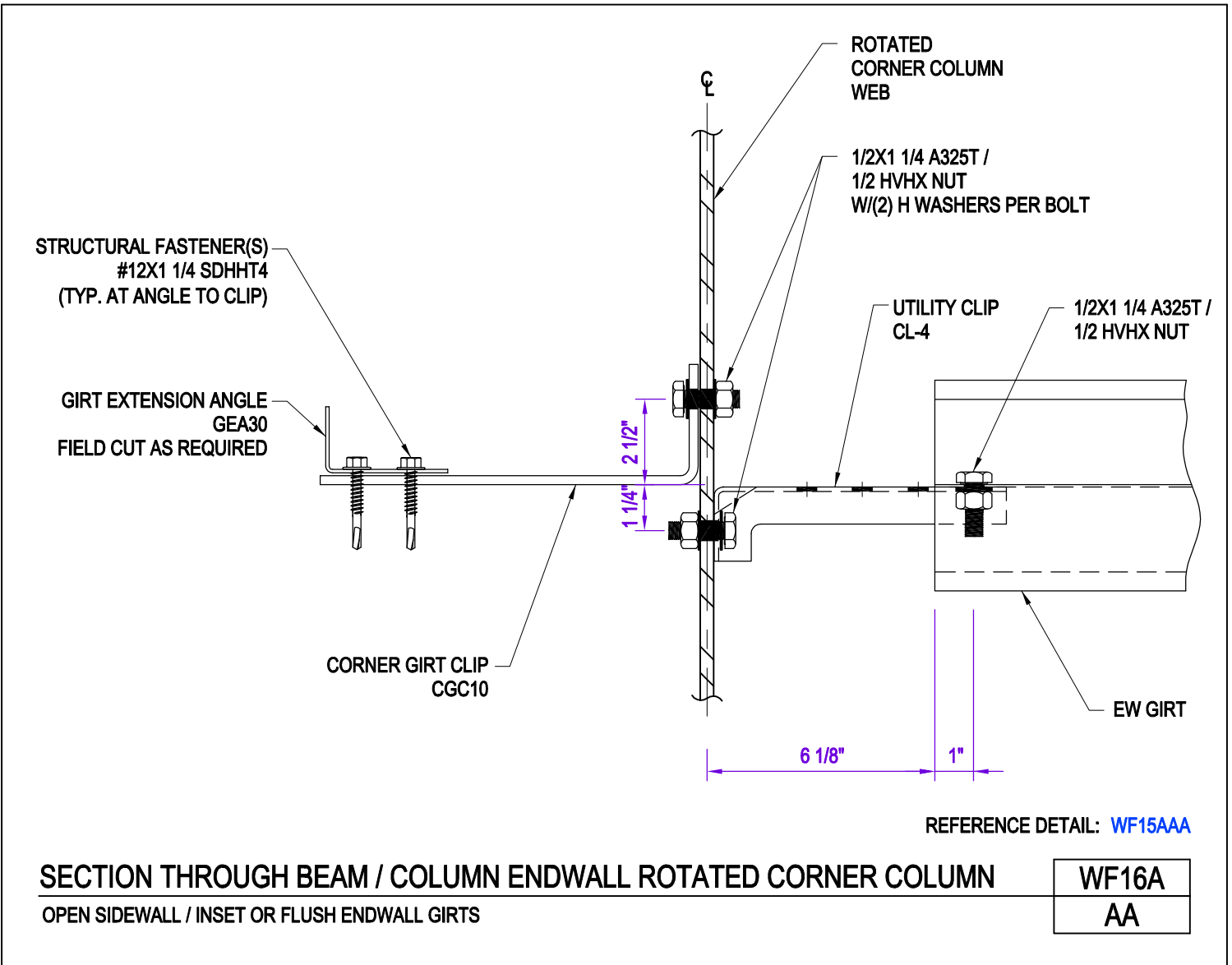
WF16

AA

[Download the DWG file by clicking here.](#)

[To Section Index](#)

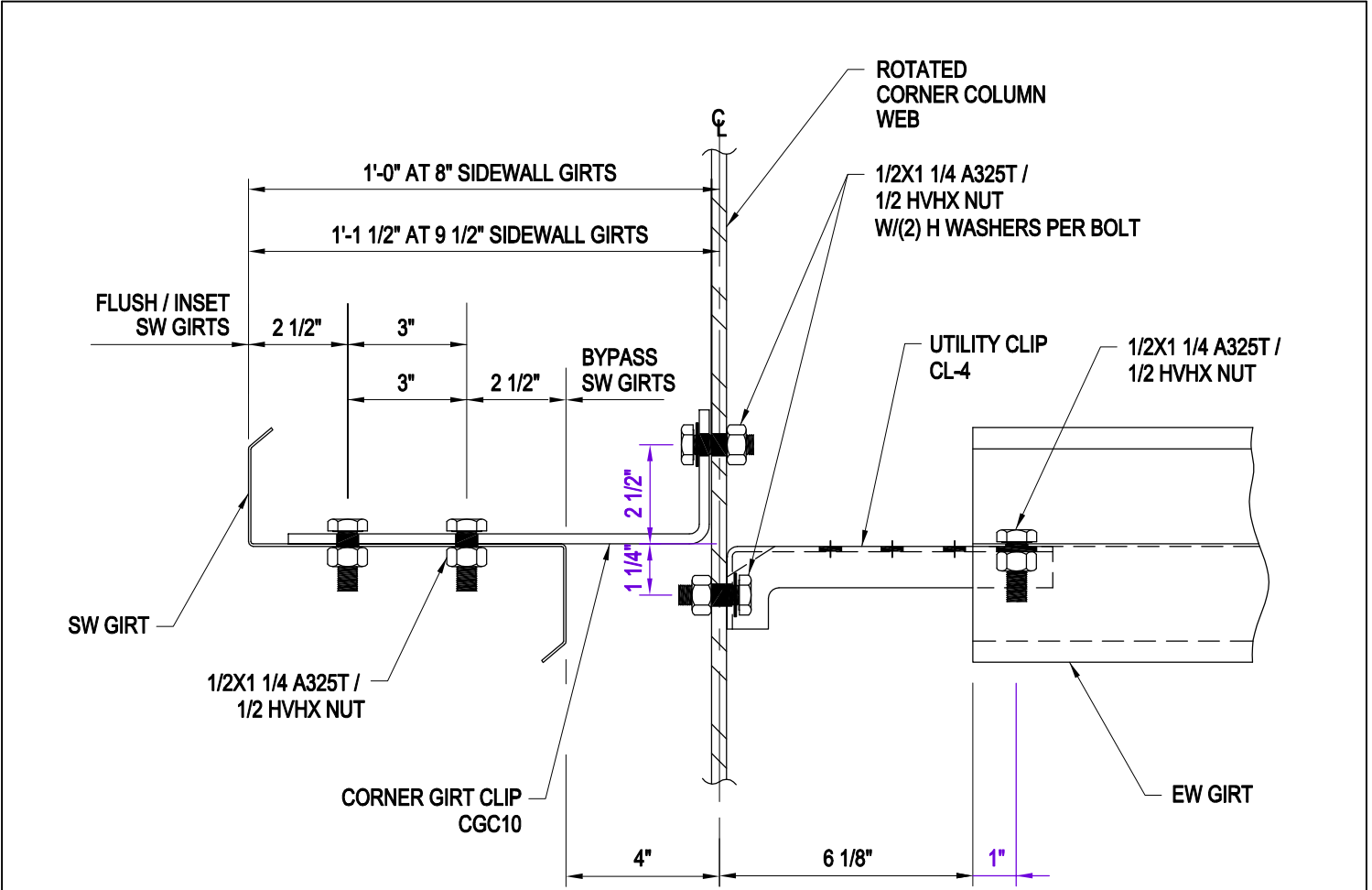
Section Through Beam/Column Endwall Rotated Corner Column
Open Sidewall/Inset or Flush Endwall Girts
WF16A/AA



[Download the DWG file by clicking here.](#)

[To Section Index](#)

Section Through Beam/Column Endwall Rotated Corner Column
 Bypass, Inset or Flush Sidewall Girts/Inset or Flush Endwall Girts
 WF16W/AA



REFERENCE DETAIL: [WF15AAA](#)

SECTION THROUGH BEAM / COLUMN ENDWALL ROTATED CORNER COLUMN

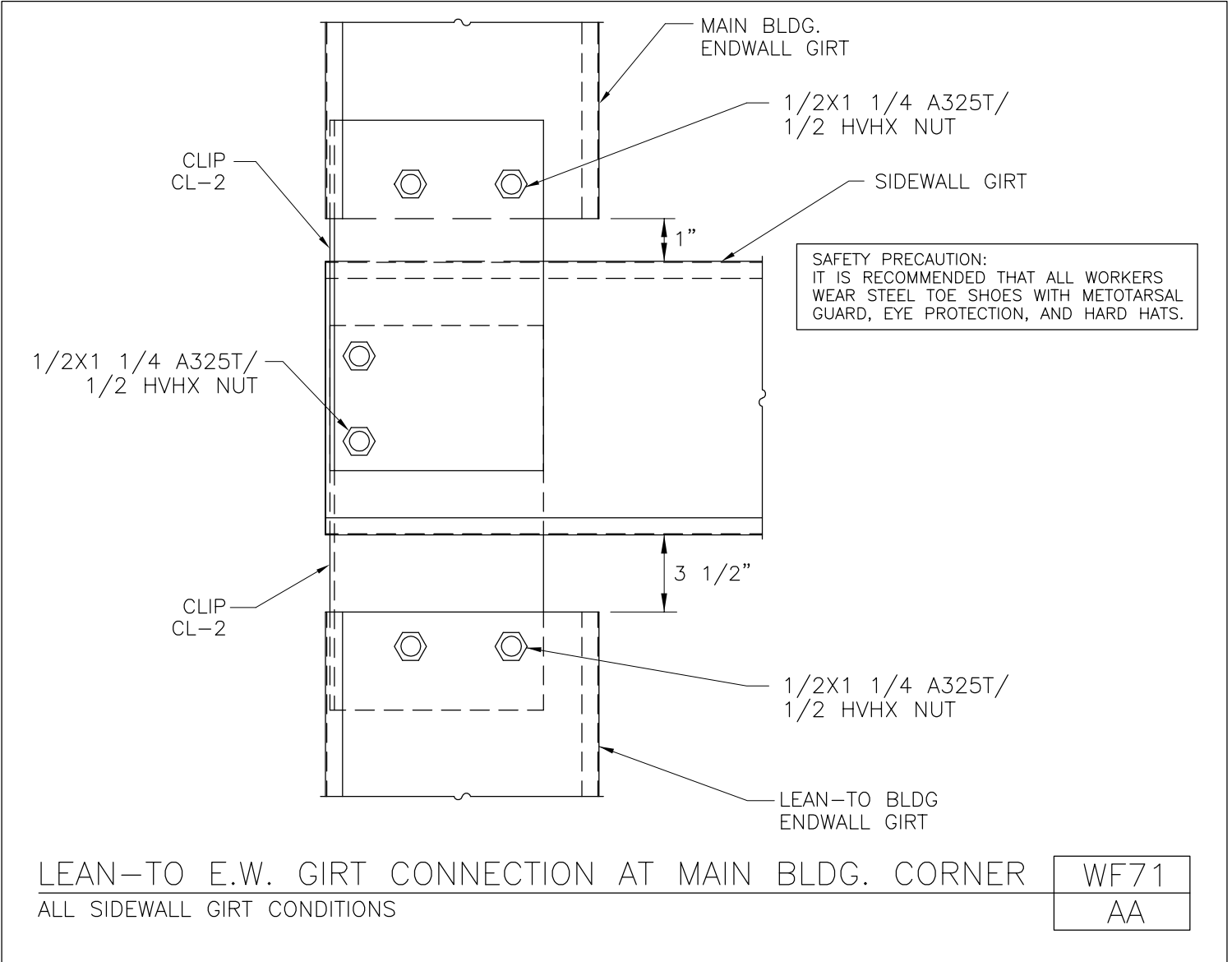
BYPASS, INSET OR FLUSH SIDEWALL GIRTS/ INSET OR FLUSH ENDWALL GIRTS

WF16W
AA

[Download the DWG file by clicking here.](#)

[To Section Index](#)

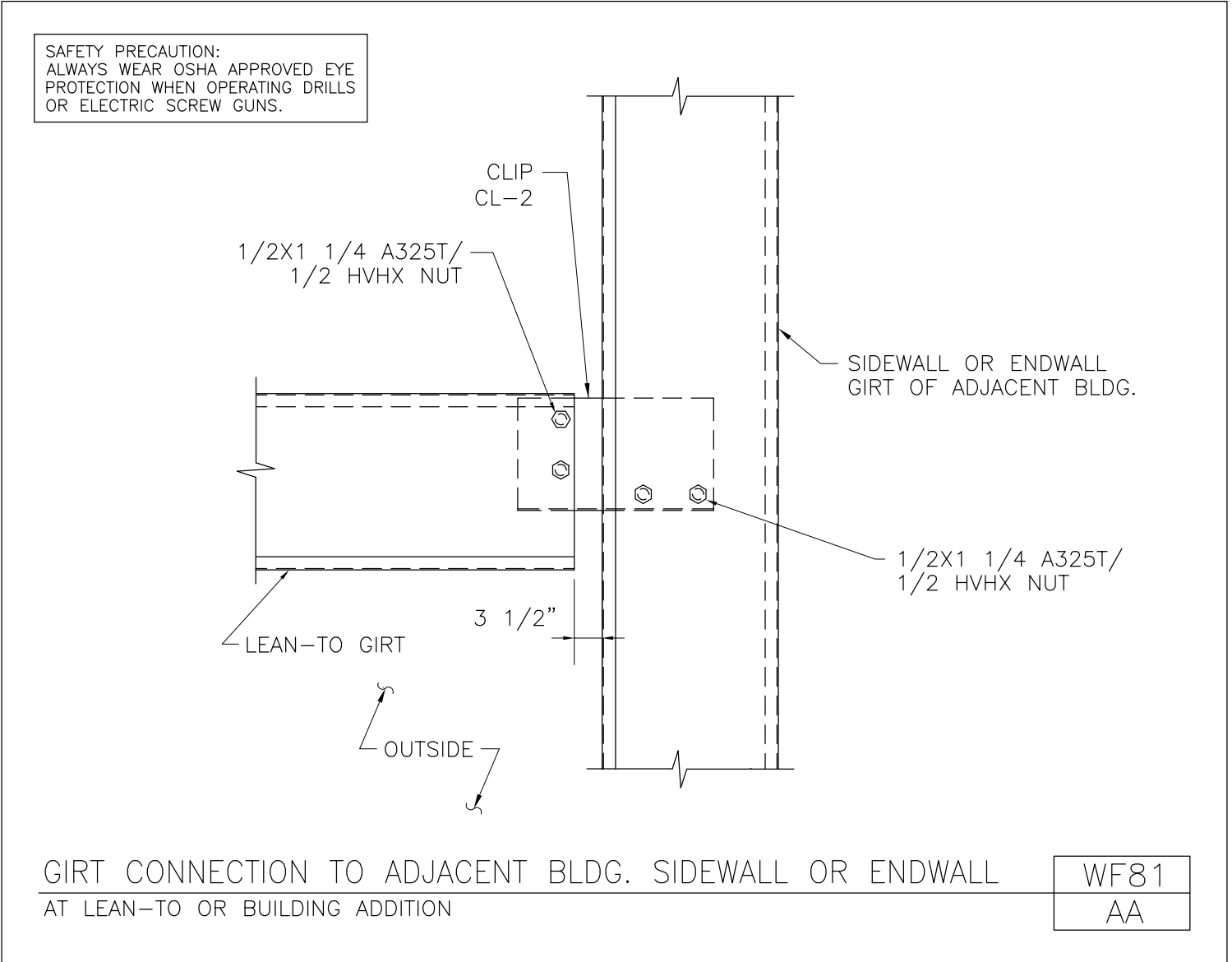
Lean-To E.W. Girt Connection at Main Bldg. Corner
All Sidewall Girt Conditions
WF71/AA



[Download the DWG file by clicking here.](#)

[To Section Index](#)

Girt Connection to Adjacent Bldg. Sidewall or Endwall
At Lean-To or Building Addition
WF81/AA



[Download the DWG file by clicking here.](#)

[To Section Index](#)