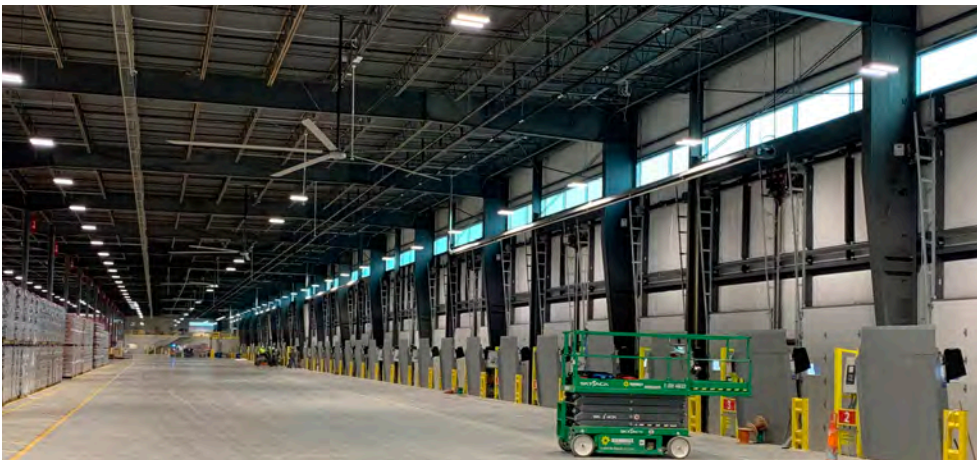
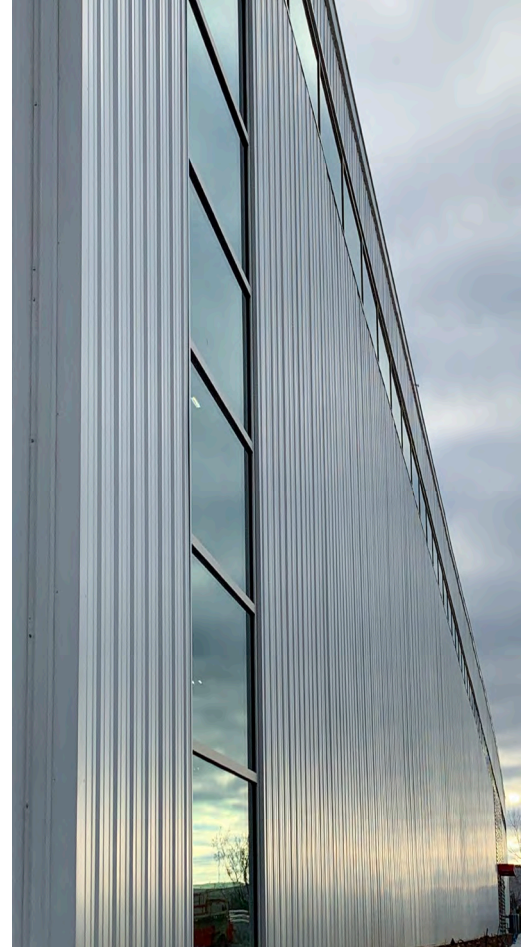


Coke Distribution Center



LOCATION

Springfield, MO

SIZE

422,251 sf

WALL SYSTEM

Architectural III Panel & Other

ROOF SYSTEM

TPO on Metal Deck

BUILDING END-USE

Warehouse & Distribution

This massive Coke Distribution Center is a combination of pre-engineered and conventional steel, featuring 42 loading docks with generator back-up power, warehouse space, several office areas, a drive-in truck loading area for side-load delivery trucks, mechanical mezzanines, as well as a large meeting/training room. Large air rotation units and fans provide heating and cooling for the warehouse and loading docks. Glass curtain walls and translucent panels not only magnify the look of the building, but provide natural lighting throughout the facility.

A notable attribute of this project is the bridge that connects the bottling facility to the distribution center, which allows enough room for conveyors to move products between the two.