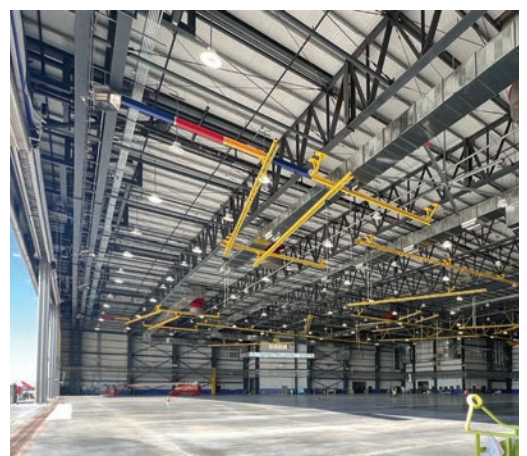
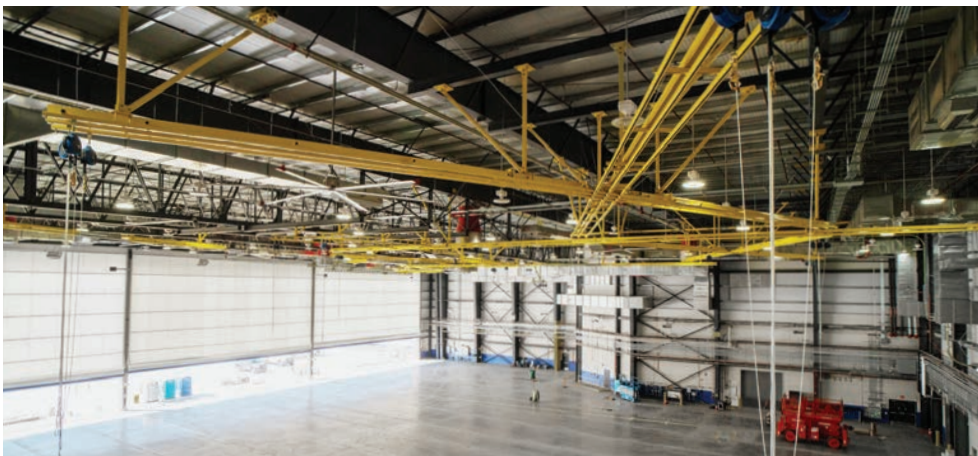


# Southwest Airlines Phoenix Sky Harbor



## LOCATION

Phoenix, AZ

## SIZE

94,000 sf

## WALL SYSTEM

Insulated Metal Panel  
Sandstone

## ROOF SYSTEM

Insulated Metal Panel/Deck  
Regal White

## BUILDING END-USE

Aviation Maintenance Hangar

The Southwest Airlines Phoenix Sky Harbor project in Phoenix, AZ features a state-of-the-art commercial aviation maintenance hangar designed to accommodate the demanding needs of aviation operations. The expansive complex is composed of eight buildings utilizing gable and single slope framing systems, anchored by a massive main hangar capable of holding three 737-800 aircrafts simultaneously. The hangar was designed with a specialized platform engineered to lift and support a Mega Door system with retractable mullions to handle more than 300,000 lbs. Several attached side buildings provide essential support spaces for offices, storage, parts, and mechanical areas.

The exterior incorporates IMP walls and IMP roof panels paired with deck, delivering an aesthetic and efficient building envelope. The facility integrates two crane systems and a coordinated fall protection system that aligns to the positioning of each aircraft below. To support critical operations, the hangar includes nine foam fire suppression generators with corresponding relief hatches and houses eight 13,000-lb HVAC units situated on the lower roofs, ensuring efficient and reliable environmental control.